

Dahua Player3.1 Operation User's Manual

Version 1.0.0

Table of Contents

1	General Introduction	1
1.1	Overview	1
1.2	Features	1
2	Installation	2
2.1	Open Player	5
3	Operation	6
3.1	Main Interface	6
3.2	Menu	7
3.2.1	Add files	7
3.2.2	Search	8
3.2.3	Preview	8
3.2.4	Export File	8
3.2.5	Digital Zoom	8
3.2.6	Drag/Child-window Switch	9
3.2.7	Full Screen	9
3.2.8	Watermark	10
3.2.9	Config	10
3.3	Playback Interface	10
3.3.1	File List	11
3.3.2	Window Layout	11
3.3.3	Playback Window	13
3.3.4	Playback Control Bar	14
3.3.5	Time Line	15
3.4	Search	16
3.4.1	File List	17
3.4.2	Motion detect search and regional motion detect search	18
3.5	Preview	18
3.5.1	File List	19
3.5.2	Video Preview	20
3.6	Export File	21

3.6.1	File List.....	22
3.6.2	Setup	22
3.6.3	Video Preview	23
3.7	Watermark	23
3.7.1	File List.....	23
3.7.2	Watermark and Watermark Info.....	24
3.8	Config	25
4	Compatible OS	27

Welcome

Thank you for using Dahua player!

This user's manual is designed to be a reference tool for the installation and operation of your system!

1 General Introduction

1.1 Overview

This Dahua player is excellent player software for the security field. It has various functions such as play, search, watermark, intelligent track display. It supports multiple-window synchronization play or asynchronous play. It supports multiple-channel display mode and customized setup. It adopts the time line design instead of the traditional process bar. Supports customized time line accuracy setup. It calls the play module to realize play operation and adopts framework design of plug-in matching mode. It reduces the risk of bug occurrence when you are implementing maintenance work and can meet flexible customized requirements.

1.2 Features

- Frame by frame backward play function, support various speeds.
- Multiple-channel playback at the same time.
- Local zoom in and drag function (So called electronic PTZ function.)
- Support preview by periods to quickly find the scene you needed. Support record synchronization playback of these periods.
- Support intelligent device bit stream playback, can display intelligent event information on the video.
- Support watermark function to avoid vicious bit stream modification and support bit stream format switch function.
- Support video property view.
- Support motion detect (MD) search function including regional detect.
- Optimized player plan.
- Optimized audio/video synchronization plan.
- Optimized fast play plan, support various fast play speeds.
- Optimized time line, enhance the way to present video.
- Optimized file list management.

2 Installation

Please follow the steps listed below to complete installation.

Click .exe file, system begins installation. See Figure 2-1.

Check the box to select English and then click next button to continue.

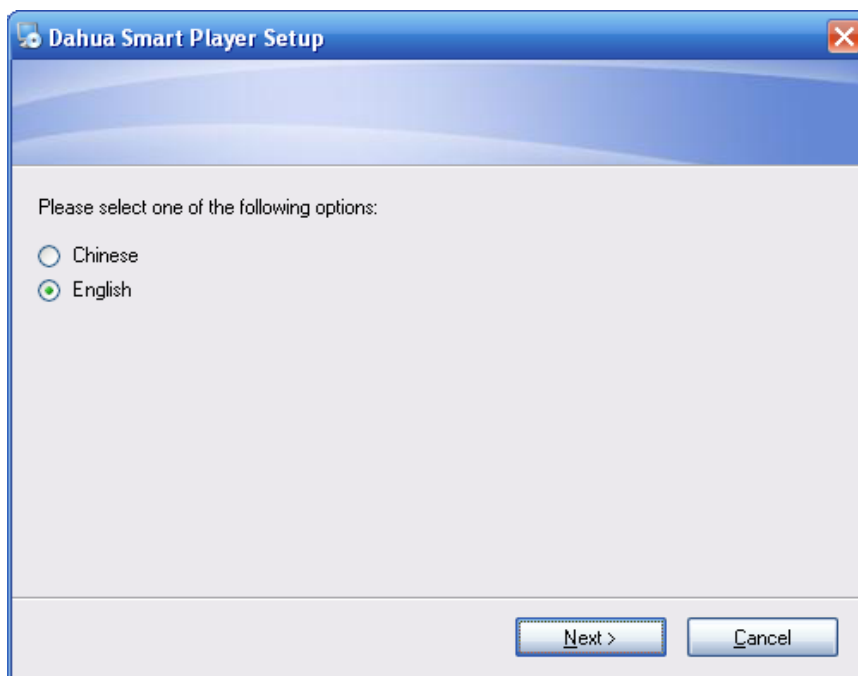


Figure 2-1

The Welcome interface is shown as in Figure 2-2. Here you can see software version and installation suggestions. Click the Next button to continue.



Figure 2-2

Now you can see an interface is shown as in Figure 2-3.
You can click Change button to modify installation directory.
Please click Next button to continue.

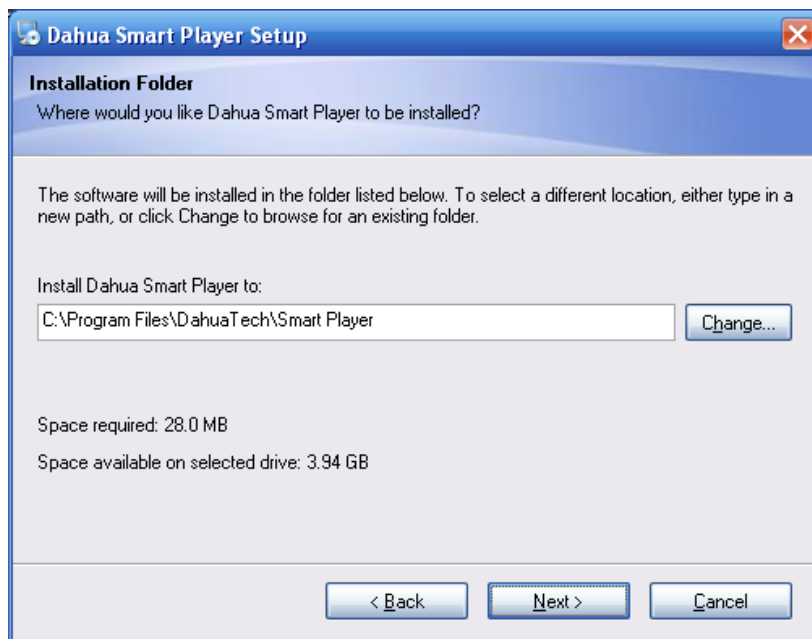


Figure 2-3

Now you can see shortcut folder interface. Here is going to create a new shortcut for Player folder. You can change according to your actual requirements. You can see the following interface. See Figure 2-4.
Please click Next button to continue.

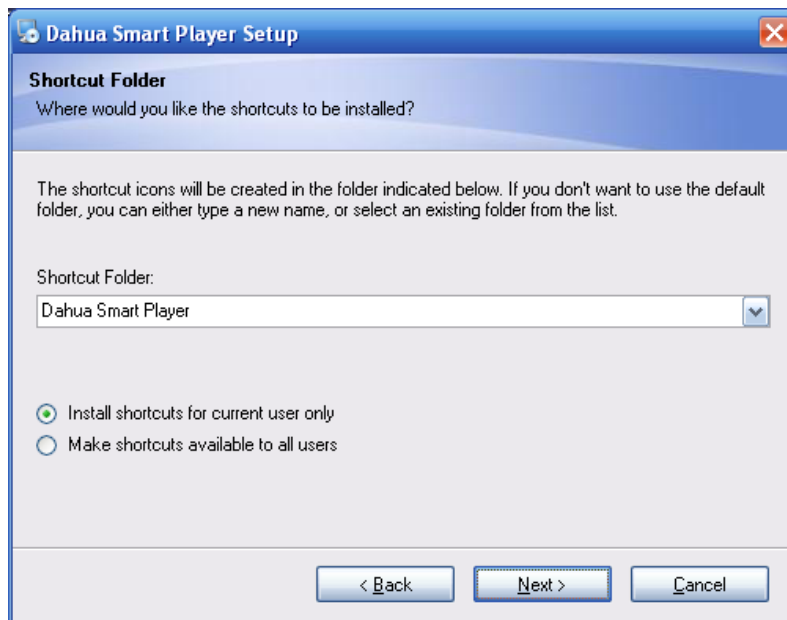


Figure 2-4

Now you go to the following interface. System becomes ready to install. The interface is shown as in Figure 2-5.

Here you can see the installation path, shortcut folder information and etc. Please click Next button to continue.

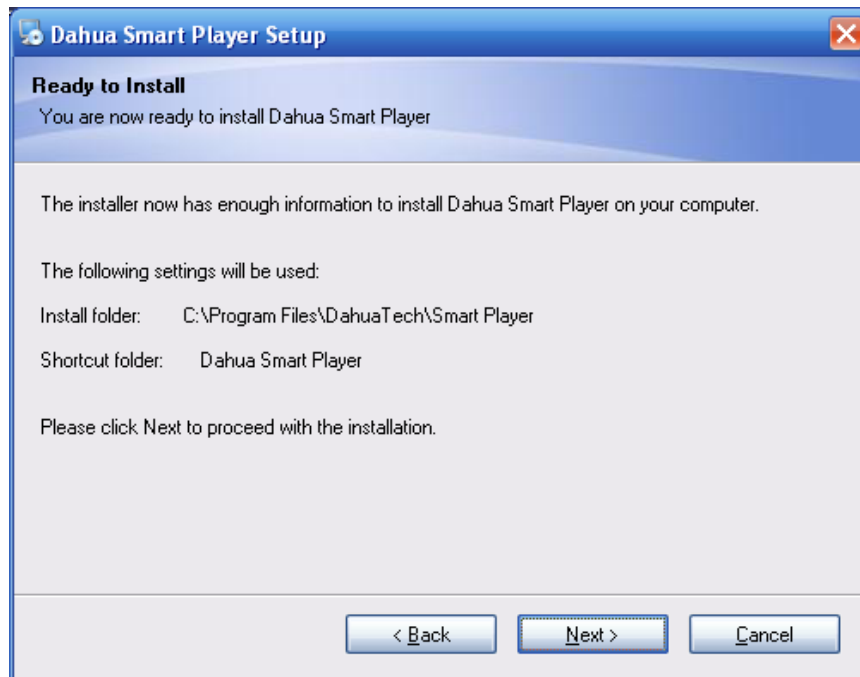


Figure 2-5

Now you can see the installation process. You can click the Cancel button to terminate current installation process. See Figure 2-6.

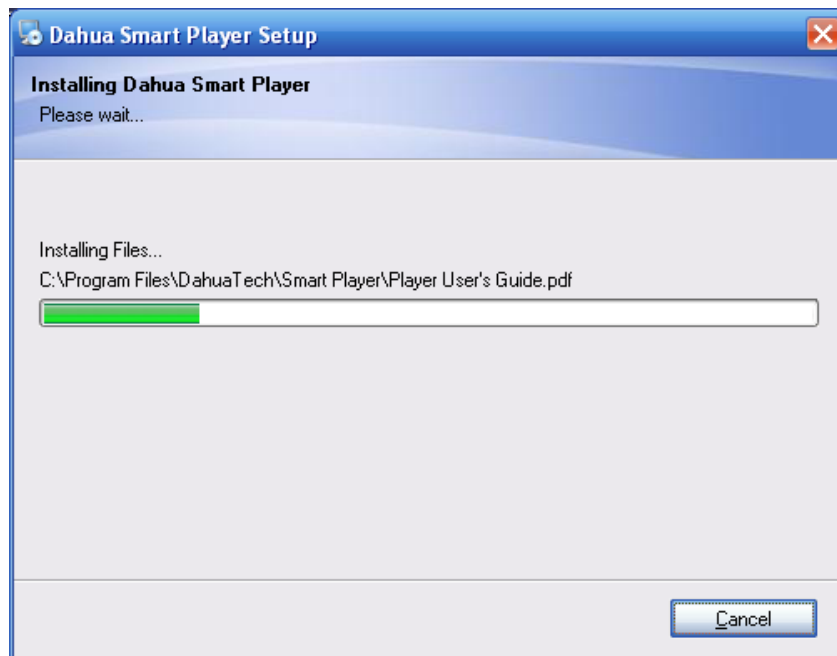


Figure 2-6

After installation, the interface is shown as below. See Figure 3-6.
Click Finish button to complete the installation.

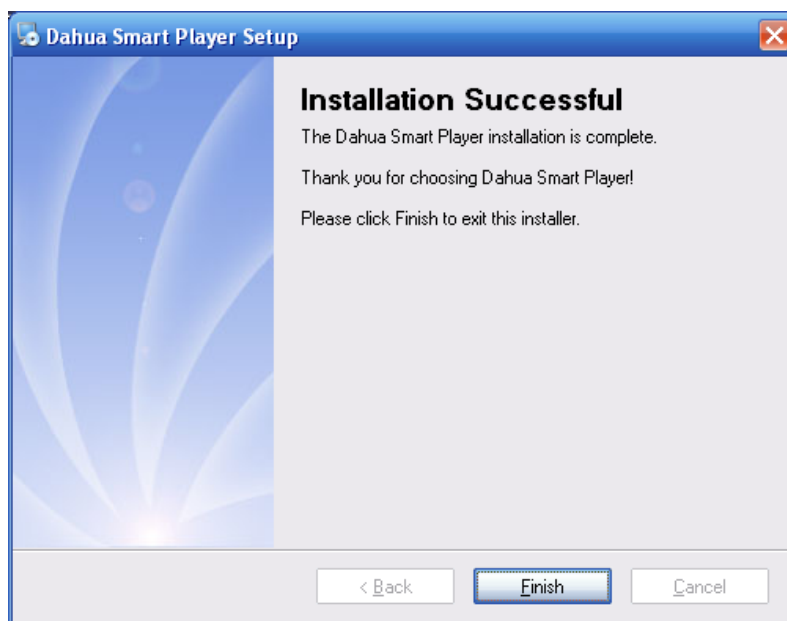


Figure 2-7

2.1 Open Player

There are two ways for you to open the player.

You can see the shortcut icon on the desktop after the installation. Double click the icon to run the software. See Figure 2-8.

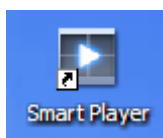
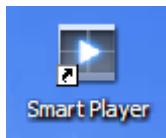


Figure 2-8

After installation, you can see the Player folder from the Start->All programs->Smart Player. Here you can uninstall software, run software, view user's manual and installation environments.

3 Operation

3.1 Main Interface



You can click the icon in the installation path or the desk to open the player interface.

Player main interface is shown as in Figure 3-1.

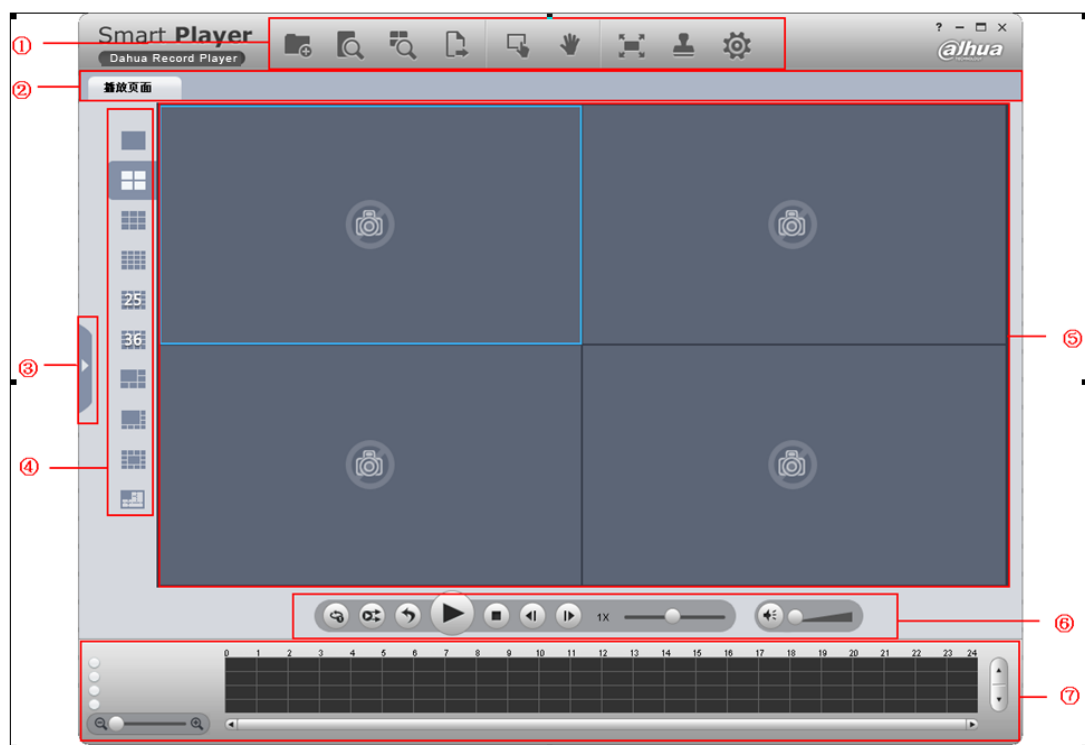


Figure 3-1

Please refer to the following sheet for detailed information.

SN	Name
1	System menu
2	Interface name
3	File list display/hide button
4	Window layout
5	Video play window
6	Play control column
7	Time line

Important

Once you close the tab name in pane 2, corresponding operation will become stop too.

3.2 Menu

System menu is shown as below. See Figure 3-2.

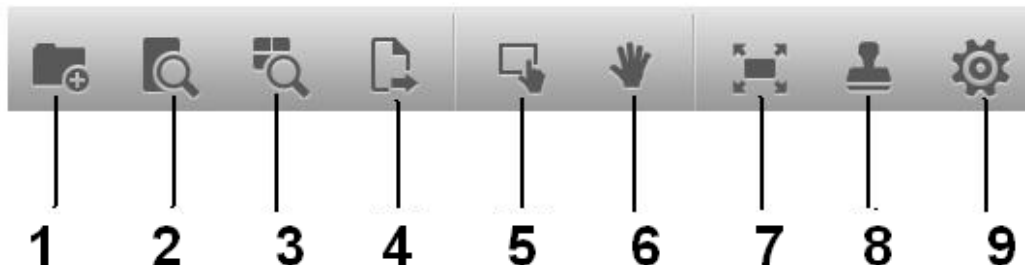


Figure 3-2

Please refer to the following sheet for detailed information.

SN	Name
1	Add files
2	Search
3	Preview
4	Export file
5	Digital zoom
6	Drag
7	Full screen
8	Watermark
9	Configuration


3.2.1 Add files



Click Add files button in Figure 3-2, you can see system pops up Open dialogue box. The interface is shown as in Figure 3-3.

Select the DAV file and then click the OK button, system can automatically add the DAV file on the same directory or the sub-level and add to the corresponding file list. If the DAV file name conforms to the record file name rule, system can relate it to file list of the corresponding channel. Otherwise system creates new list to display current file. Current add file operation is based on the previous operation.

Tips: For your convenience, you can drag the DAV file or file directly to the play window. It has the same effect as the Add files button. You can view your latest open file on the file

list. Select all files and then click  to clear all list.

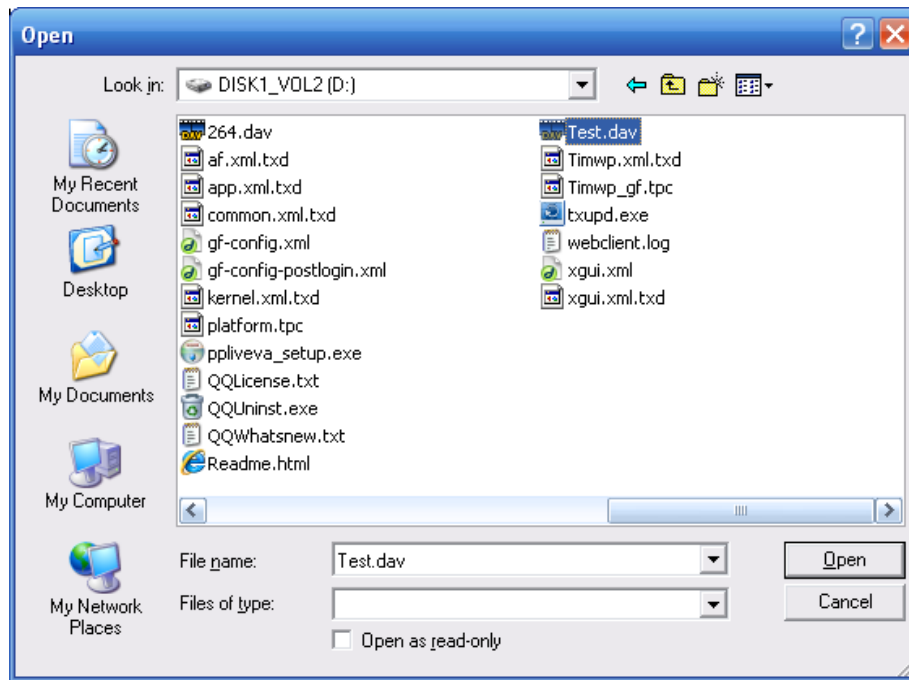


Figure 3-3

3.2.2 Search



Click Search button in Figure 3-2, you can open or go to the search interface.

Here is for you to search motion detect or regional detect on one record file. See chapter 3.4 for detailed information.

3.2.3 Preview



Click Preview button in Figure 3-2, you can open or go to group preview interface.

It is mainly for the multiple-group preview of one file. See chapter 3.5 for detailed information.

3.2.4 Export File



Click Export File in Figure 3-2, you can open or go to export file interface. It is mainly for the exporting the specified record footages or pictures. See chapter 3.6 for detailed information.

3.2.5 Digital Zoom



On the playback interface, click the Digital Zoom button and then left click mouse you can draw a red rectangle, release left button, system can zoom in the specified red rectangle. See Figure 3-4.

Note:

System supports some specified zoom in speeds and can not zoom in as much as you click. You can right click mouse to restore the play window.

Tips:

Use the middle button of the mouse to zoom in the video when the mouse cursor as the centre.

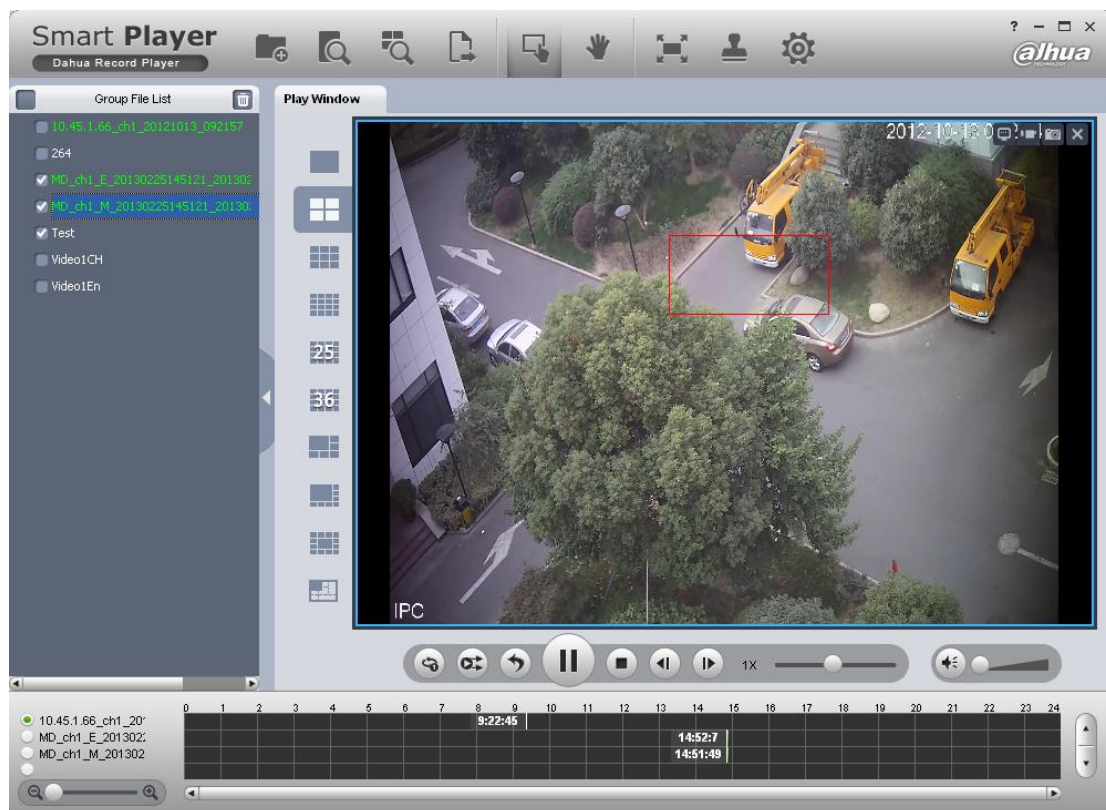


Figure 3-4


3.2.6 Drag/Child-window Switch



On the play interface, click Drag button or child-window switch button, you can control the play window in these two modes. When system is in drag mode, the mouse indicator becomes palm size. You can use drag operation to view other hidden zones if you have realized digital zoom function. If the system is in child-window switch mode, you can drag one window to another window to realize window switch operation.


3.2.7 Full Screen



On play interface, click Full screen button , you can see the play window occupies the whole window. This function is suitable for the video monitor or playback record for a long time. You can click the “Esc” button on the keyboard to restore player main interface.


3.2.8 Watermark



Click the Watermark button , you can open or go to Watermark interface. It is mainly for one or several record file watermark operation. See chapter 3.7 for detailed information.

3.2.9 Config



Click Config button , you can open or go to configuration interface. In this interface, you can set player snap saved path, format, footage clip saved path and format, play window rate, intelligent track enable/disable, and player language. See chapter 3.8 for detailed information.

3.3 Playback Interface

The playback interface is shown as in Figure 3-5.

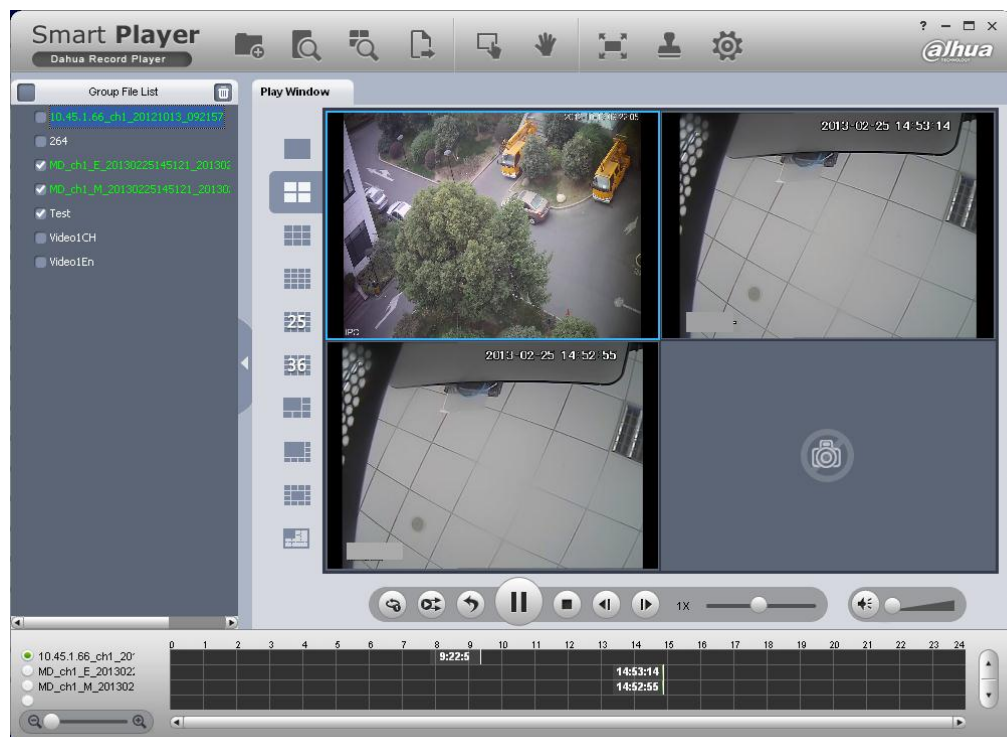



Figure 3-5

3.3.1 File List

The file list interface is shown as in Figure 3-6.

The group file list is to display the added file folder, file and the record file on the same directory. Current playback file is shown as green. Check the group name or double-click

the group name; you can select a record group. Click  to delete selected file(s) on the list. If you are trying to playback, export or searching file(s), you can see the proper pop-up dialogue.

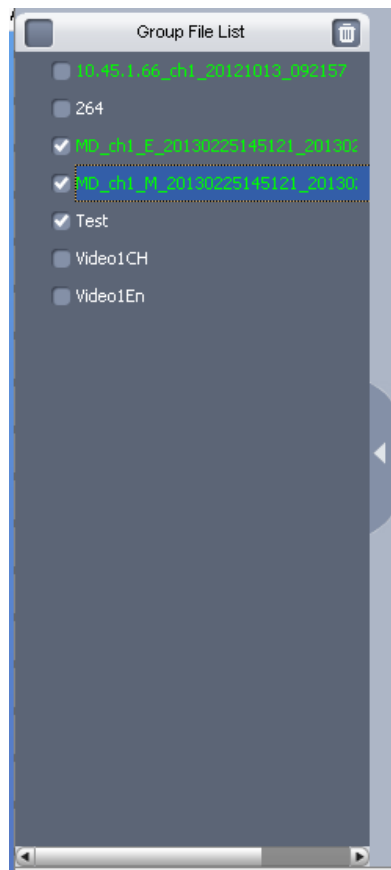


Figure 3-6

3.3.2 Window Layout

Here is to define playback window size and position. Usually there are nine types. You can also customize some special window layouts. You can click the layout button to select the window display mode. See Figure 3-7.



Figure 3-7



Once you click Custom layout button , you can see the following interface. See Figure 3-8.

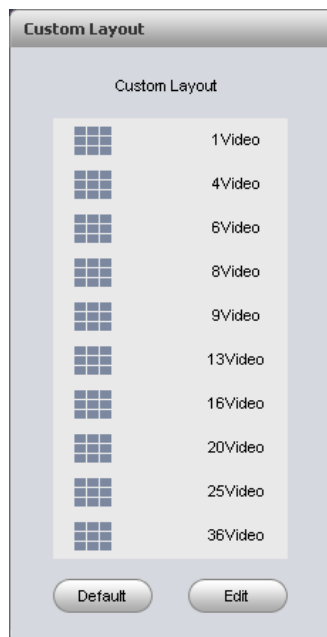


Figure 3-8

Click Edit button, you can edit layout line, row and pane size. See Figure 3-9.

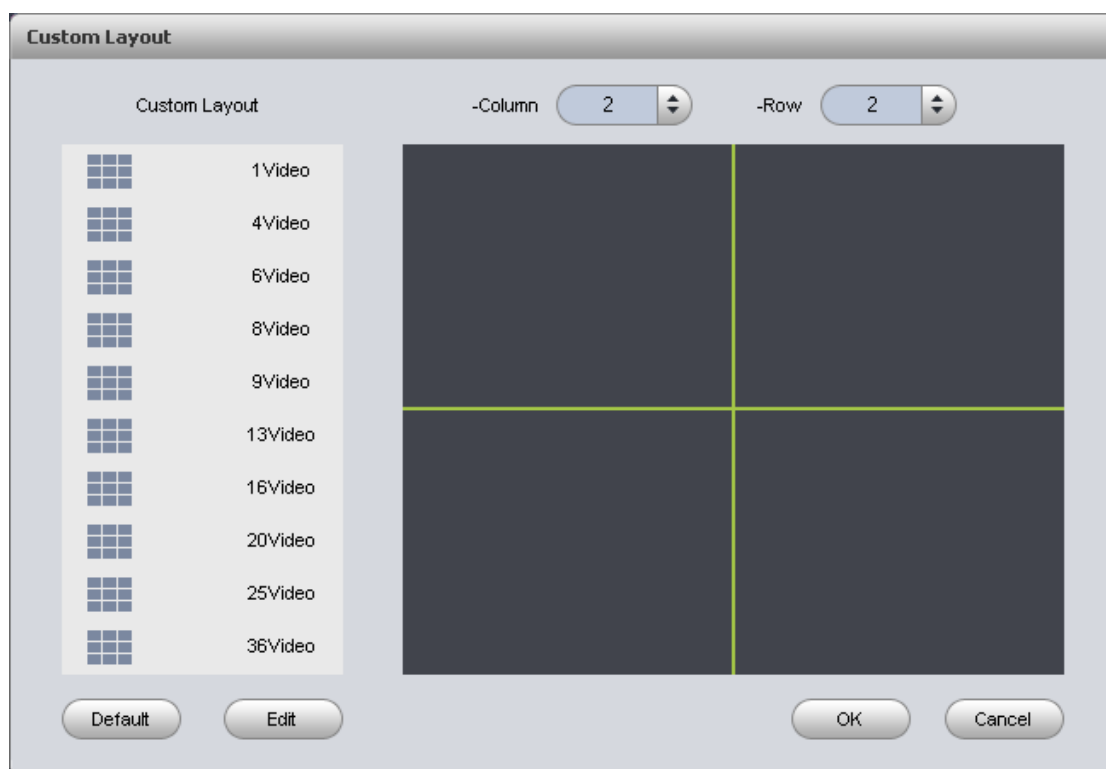


Figure 3-9

3.3.3 Playback Window

The playback window is to display record file corresponding information such as file name, time and etc. See Figure 3-10.

You can view time on the playback window if current record has overlaid time. Otherwise, you can not see time information.

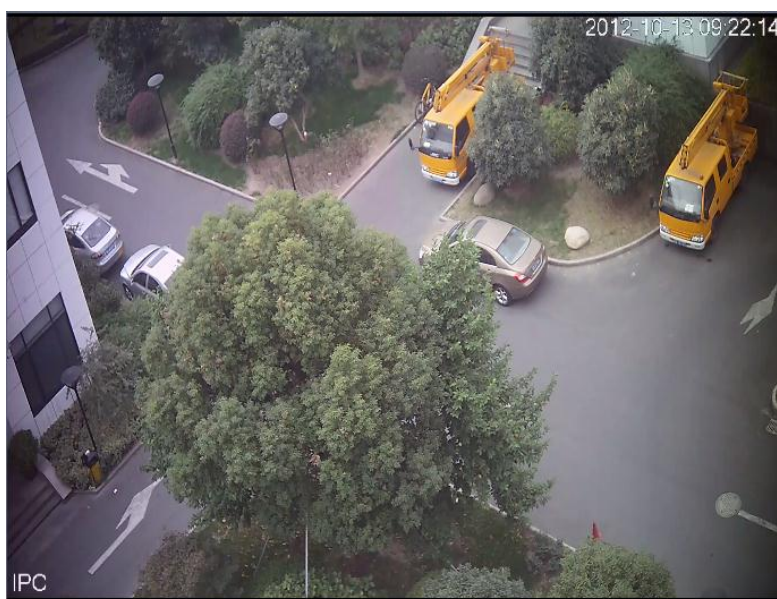


Figure 3-10

Move your mouse to any window; you can see the following control bar at the top right corner. See Figure 3-11.

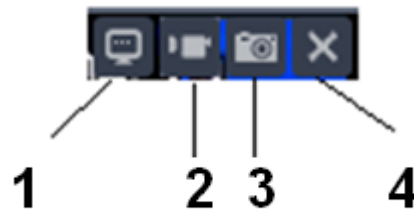


Figure 3-11

Please refer to the following sheet for detailed information.

SN	Name
1	Video property
2	Clip
3	Snapshot
4	Close video

- Property: Click it to view video property. See Figure 3-12.



Figure 3-12

- Clip: It is to edit a record. Please play a file first and then click this button to begin clip. Click this button again, clip operation is complete. Now you get a new file. You can go to chapter 3.8 to set save path.
- Snapshot: Click it to snap one picture. You can go to chapter 3.8 to set save path.
- Close video: Click it to close current video window.

3.3.4 Playback Control Bar

The playback control bar is shown as in Figure 3-13.

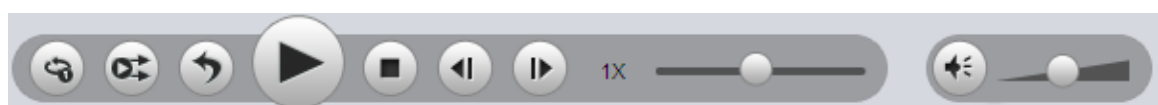







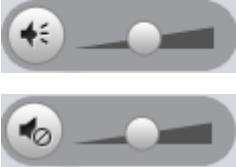


Figure 3-13

Please refer to the following sheet for detailed information.

Button	Note
	<ul style="list-style-type: none"> System is in single repeated process when the button is highlighted. System is in sequence play process when the button is grey.
	<ul style="list-style-type: none"> System is in synchronization playback process when the button is highlighted. System is in asynchronous process when the button is grey. <p>Note: it is for group playback mode.</p>
	<ul style="list-style-type: none"> System is in backward playback process when the button is highlighted. System is in normal playback process when the button is grey. <p>Note: It is for all-window when system is in group playback mode. It is for current window only when system is not in group playback mode.</p>
	Play and stop button can realize multiple-window pause, playback.
	Stop: Stop all playback windows.
	<ul style="list-style-type: none"> In pause mode, it is the previous frame, next frame playback. In play mode, it is the preview group, next group playback. <p>Note: It is for the whole group when system is in group playback. It is for current window only when system is not in group playback mode.</p>
	<p>Speed setup:</p> <ul style="list-style-type: none"> 1/2, 1/4, 1/8, 1/16 1x, 2x, 4x, 8x, 16x -1/2, -1/4, -1/8, -1/16, -1, -2, -4, -8, -16
	Volume setup: You can set volume value and mute. System can play audio when in normal playback process.

3.3.5 Time Line

After you double click to playback a file, system can automatically add a time line and display the real-time playback time of each window.

Once you check synchronization playback for the whole record group, there is only one time line. See Figure 3-14.

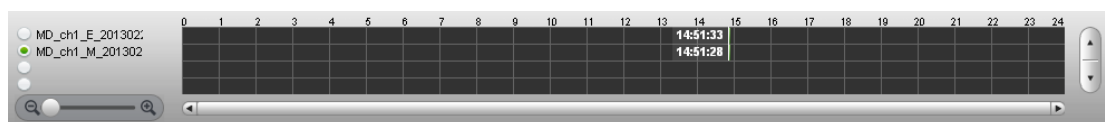


Figure 3-14

Otherwise, it is shown as in Figure 3-15.

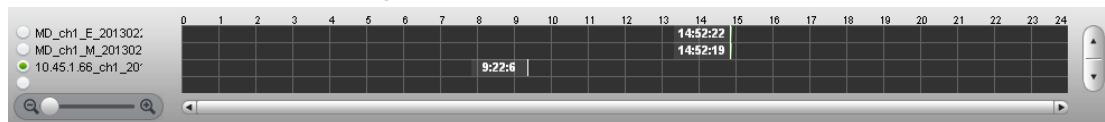


Figure 3-15

Put your mouse on the time line, you can see system playback video of current time for about 5 seconds repeatedly if index has created. See Figure 3-16.

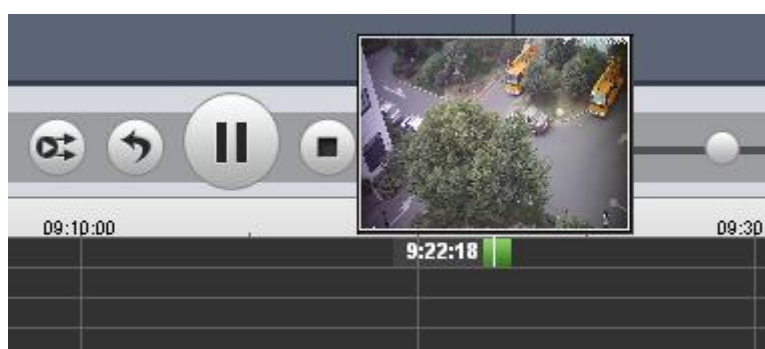


Figure 3-16

When system is playbacking in multiple-window mode, click switch focus window, the time line displays time of the current selected window as its centre.

3.4 Search



Click Search button on the main interface, you can go to the Search interface.

Here you can quickly search motion detect record or regional motion detect file of one record file. See Figure 3-17.

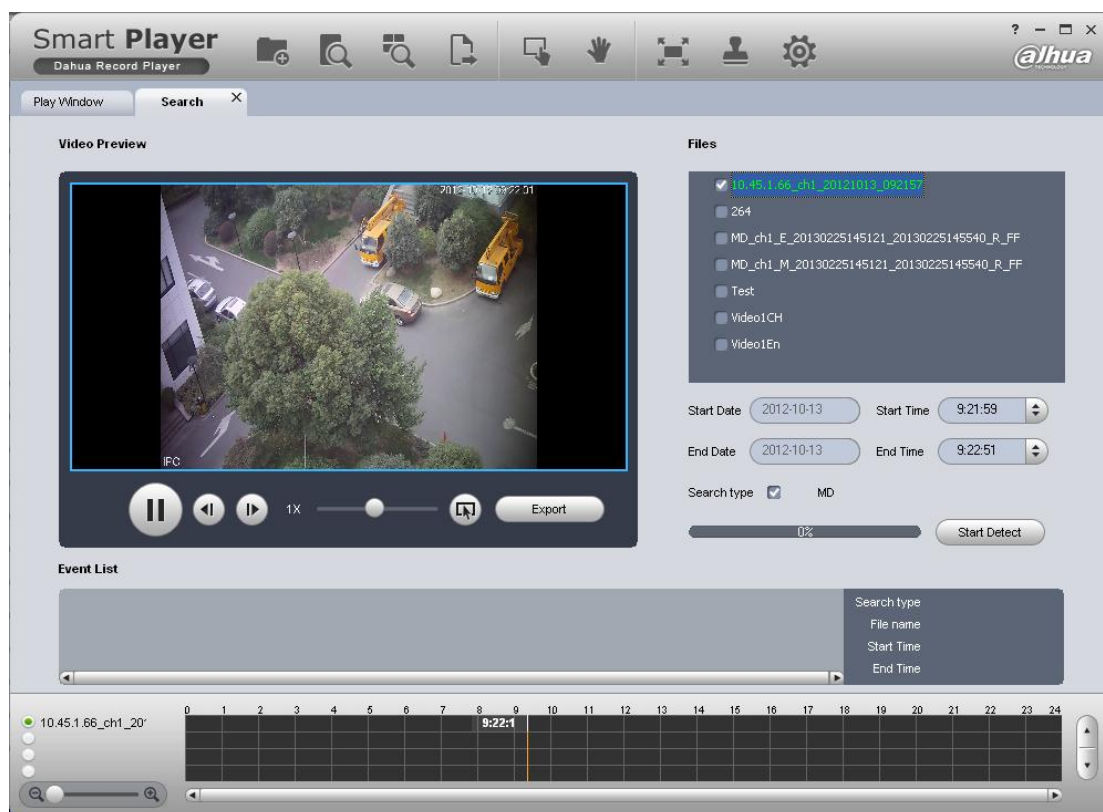


Figure 3-17

3.4.1 File List

You can view all records of current selected folder on the file list on the right pane. It can be record group or general record. For records of one group at one day, you can enable batch motion detect search.

Please select the motion detect record files:

- Check a date of one group to select records of all channels of one day.
- Check some channels of one group of one day.
- Check one file; you can see current preview channel is highlighted.

The file list is shown as in Figure 3-18.

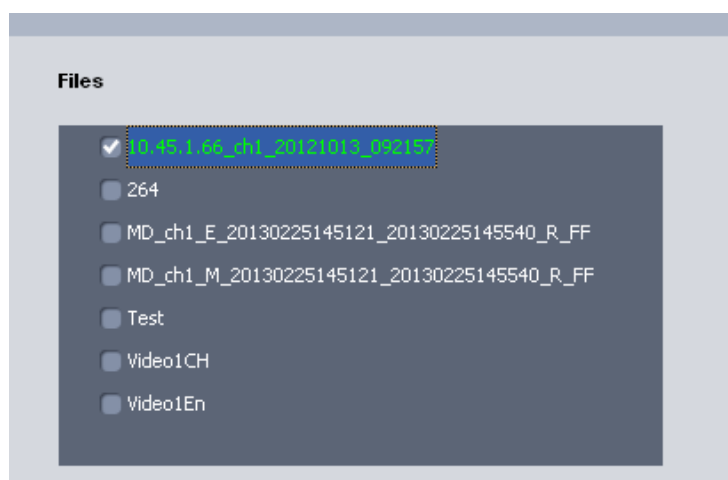


Figure 3-18

3.4.2 Motion detect search and regional motion detect search

Motion detect search: Check a file you want to search and then input parameters. Click Start search button, you can see system begins motion detect search.

Regional motion detect search: Check a file you want to enable regional motion detect



search and click the button at the image preview pane. Left click mouse on the current window and dragw a red rectangle. Clcik Start search, system begins motion detect of the selected region on the record file.

You can view there is a detect process bar for your reference. See Figure 3-19.

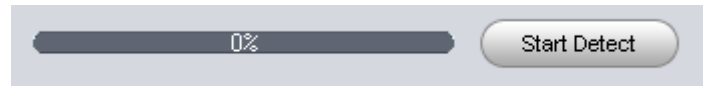


Figure 3-19

During the process, you can click stop detect button to terminate motion detect operation.

After the detection, you can view the first frame of each record on the event list. Select a record, you can view its corresponding information on the right pane. See Figure 3-20.



Figure 3-20

Double click a file, you can view the video beginning from current time. Click export button to export current record file.

3.5 Preview



Click the Preview button, you can go to the following interface. Here you can view the video by periods and quick find out the video you want. Double click the file or folder you want to implement group preview, system can divide record to N (N= interface amount you set) sections by time. You can preview each period respectively. See Figure 3-21.



Figure 3-21

3.5.1 File List

You can view the file list of current selected folder. It is the same as in the playback interface. See Figure 3-22.

Note:

Group preview is for single record only. For record list, there is no record group.

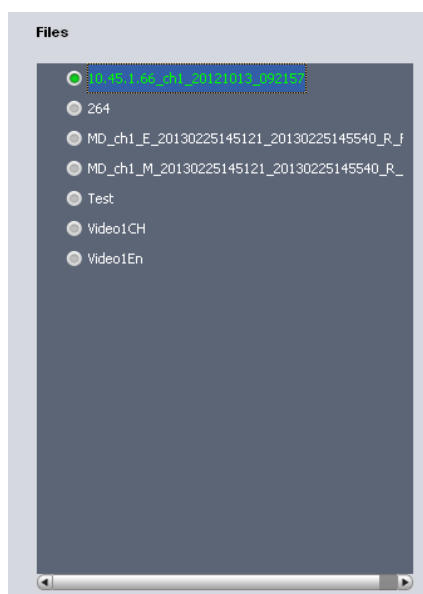


Figure 3-22

3.5.2 Video Preview

Double click a file in the list, system can divide the record period according to the section amount and then display corresponding picture. See Figure 3-23. For example, record is from 2:00 to 3:00, the selected section amount is 4, the system displays 2:00, 2:15, 2:30, and 2:45.

Note:

System may take time to create index. Please be patient. .

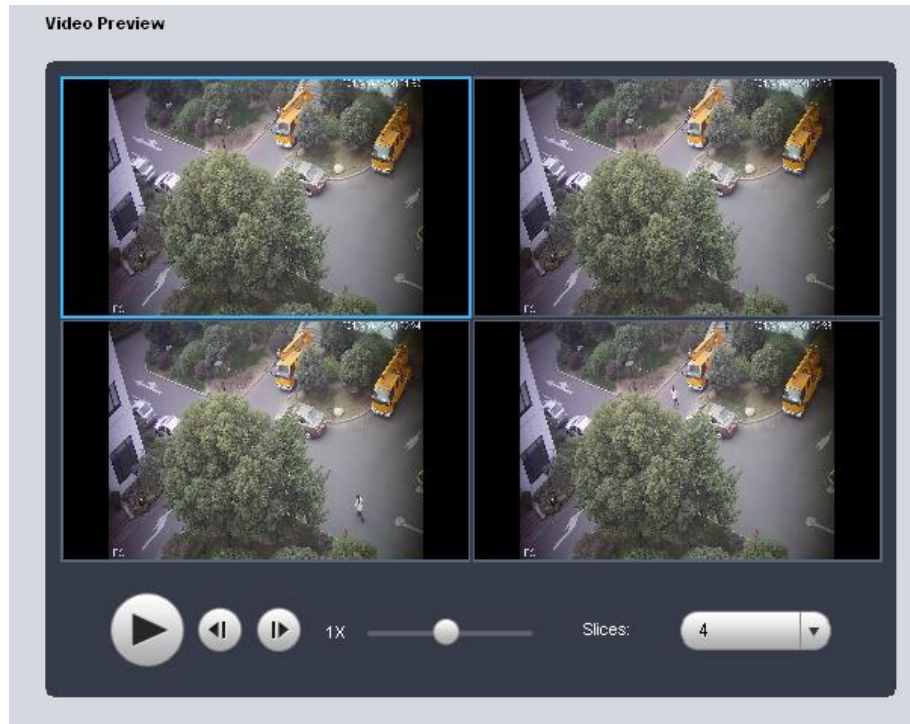


Figure 3-23

After system created sections, you can select the corresponding time to play.

Select corresponding play time window.

Click Play button, the corresponding window begin play at the displayed time. You can implement pause, frame by frame playback, fast play, slow play and etc.

Slices: System needs to slice again if there is record in the group preview. See Figure 3-24.

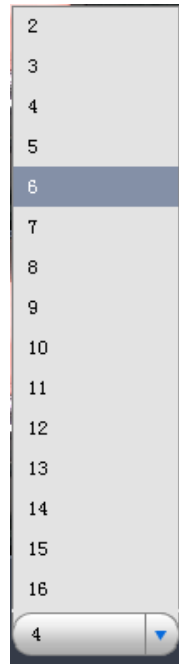


Figure 3-24

3.6 Export File



Click Export button, you can see export file interface is shown as in Figure 3-25.

Select the file(s) you want to export and use the preview to set period, file(s). The export format supports JPG, BMP, DAV, and AVI.

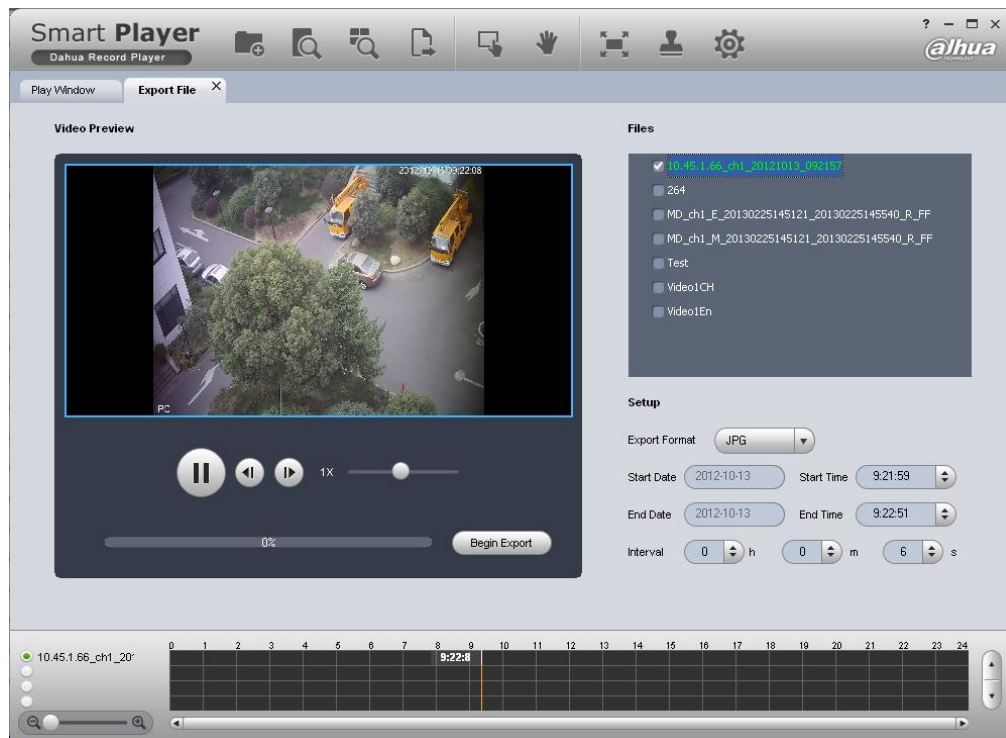


Figure 3-25

3.6.1 File List

The file list on the right side is to display all records of current selected folder. It is the same as the records on the playback interface. There are group record and general record. You can batch export record of the same group of the same day. See Figure 3-26. You need to check to select the record you want to export.

- Check a date of one group to select records of all channels of one day.
- Check some channels of one group of one day.
- Check one file; you can see current preview channel is highlighted.

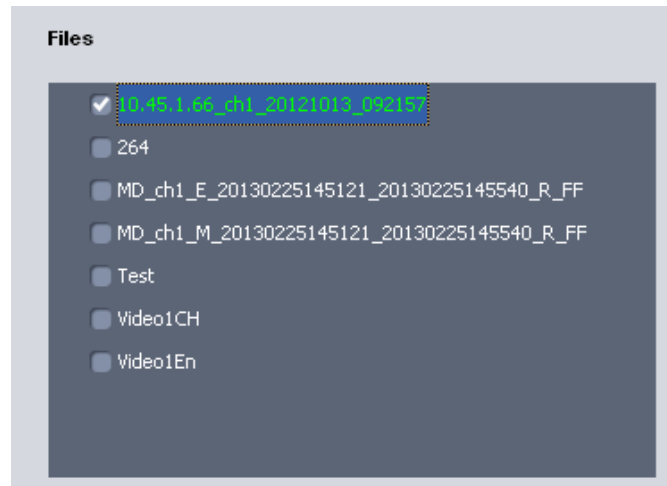


Figure 3-26

3.6.2 Setup

The Setup interface is shown as in Figure 3-27.

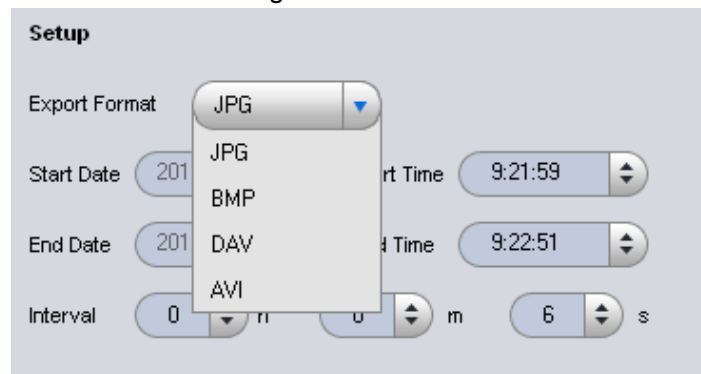


Figure 3-27

Please refer to the following sheet for detailed information.

Item	Note
Export format	Export modes support JPG, BMP, DAV and AVI. The former two are picture modes and the later two are record modes.
Start time	It is to set file start time; it is corresponding to the left value of the time line.
End time	It is to set file end time; it is corresponding to the right value of the time line.

Interval	It is to set picture export interface. It is for picture export only.
----------	---

3.6.3 Video Preview

Playback: Check a file, video preview interface will play the file from the playback list or the record or picture of the highlighted channel. At the same time, you can implement pause, frame by frame playback, slow playback, fast playback and etc. See Figure 3-28.



Figure 3-28

Export: After you set parameters, click the Begin export button to set save path and then begin. You can view export process bar or you can click the Stop export button to terminate. You can see export succeeded dialogue box after the export operation. See Figure 3-29.



Figure 3-29

3.7 Watermark

Click the Watermark button of the system menu; you can go to the watermark interface. Watermark function is to check the selected record file has been tampered with or not.

3.7.1 File List

You can view all record file on the left pane. There can be record group or general record. Please check the corresponding box to select a file to check. See Figure 3-30.

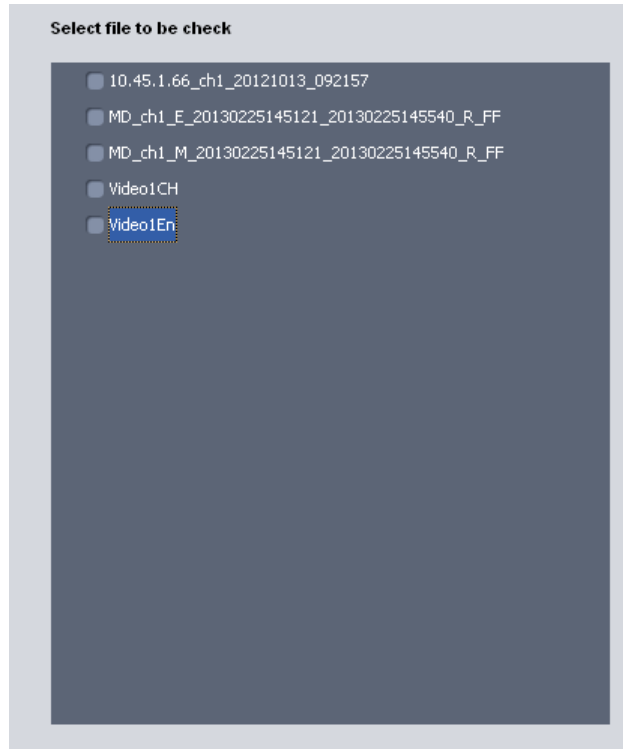


Figure 3-30

3.7.2 Watermark and Watermark Info

Select a record file first and then click the Start Check button to begin the process. You can view record path, percentage, check result and etc. See Figure 3-31.

[illegible]

Figure 3-31

During the check process, you can click Stop check button to terminate current operation. You can click the corresponding record column of watermark information to view the tamper information. See Figure 3-32.

[illegible]

Figure 3-32

3.8 Config

Click Config button on the system menu, you can see an interface shown as in Figure 3-33.

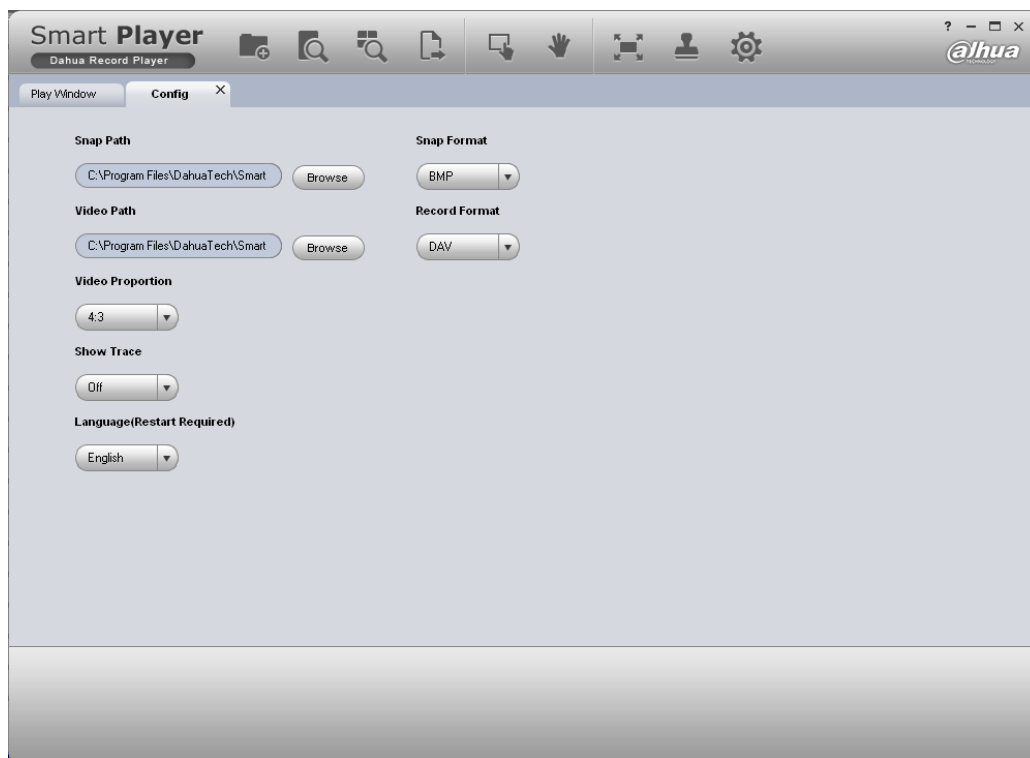


Figure 3-33

Please refer to the following sheet for detailed information.

Item	Note
Snap path/format	On the playback interface, you click the snap button, system can save picture to the specified path as your set format.
Video path/format	On the playback interface, you click the record button, system can save record file to the specified path as your set format.
Video proportion	It is to set video window proportion. There are three options: 4:3, 16:9 and 100%.
Show trace	It is to set display intelligent track or not. Please note it is for intelligent device only.
Language	You can select English/Chinese. Please note system needs to reboot to activate current setup.

Note:

System can save current setup even after you close the player.

4 Compatible OS

Mini Requirement	CPU Intel P4 1.8GHz
	1G memory
	50MB free HDD space
	Resolution 16bit 800x600
	Mouse, keyboard, USB
	Microsoft Windows 95/98/ME/NT4.X/2000/XP
Recommended Requirement	CPU Intel Core 2 Duo E6600
	Dual-channel 2G memory or higher, 256M independent display card
	512MB free HDD space or higher
	Resolution 16bit 1024x768
	Mouse, keyboard, USB
	Microsoft Windows 2000-SP4/2003/XP-SP2
Compatible OS	<ul style="list-style-type: none">● Windows Server 2003● Windows Server 2008● Windows XP● WIN7

Note:

- This manual is for reference only. Slight difference may be found in the user interface.
- All the designs and software here are subject to change without prior written notice.
- All trademarks and registered trademarks mentioned are the properties of their respective owners.
- If there is any uncertainty or controversy, please refer to the final explanation of us.
- Please visit our website or contact your local retailer for more information.

Address: No.1187 Bin'an Road, Binjiang District, Hangzhou, China.

Postcode: 310053

Tel: +86-571-87688883

Fax: +86-571-87688815

Email: overseas@dahuatech.com

Website: www.dahuatech.com