



PMS

Installation Guide

ZHEJIANG DAHUA VISION TECHNOLOGY CO., LTD.

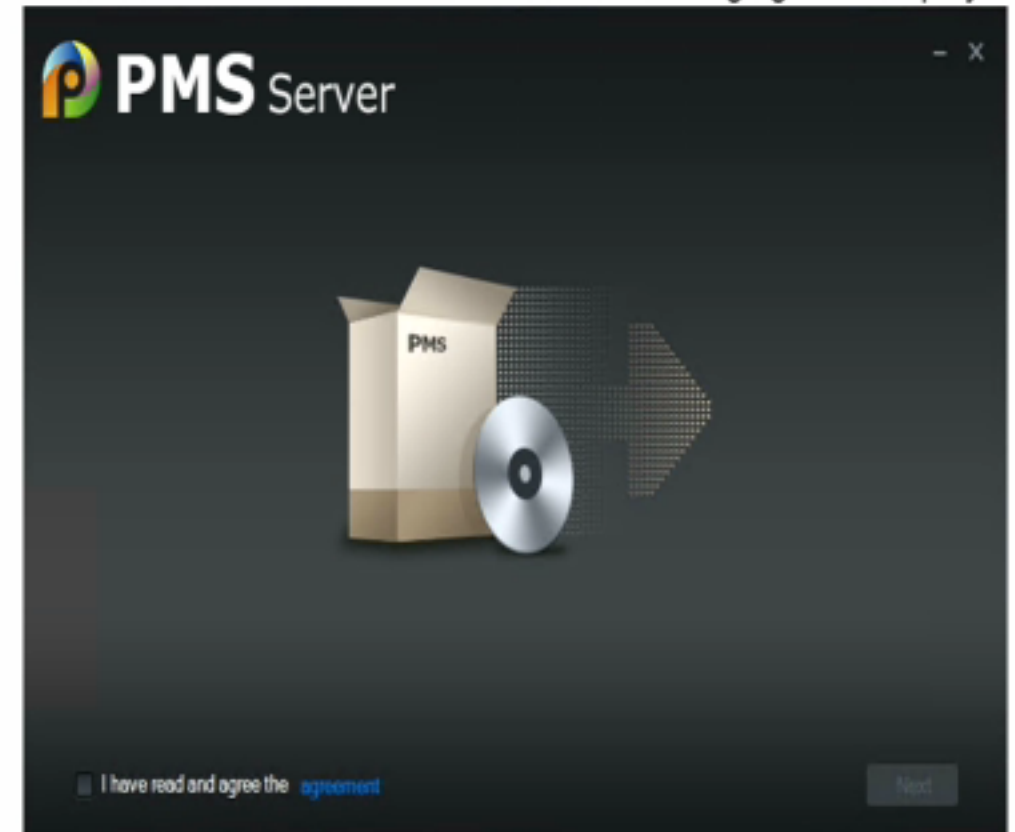
Table of Contents

- [1 Installing PMS Server](#)
- [2 Installing PMS Client](#)
- [3 Installing Card Control](#)

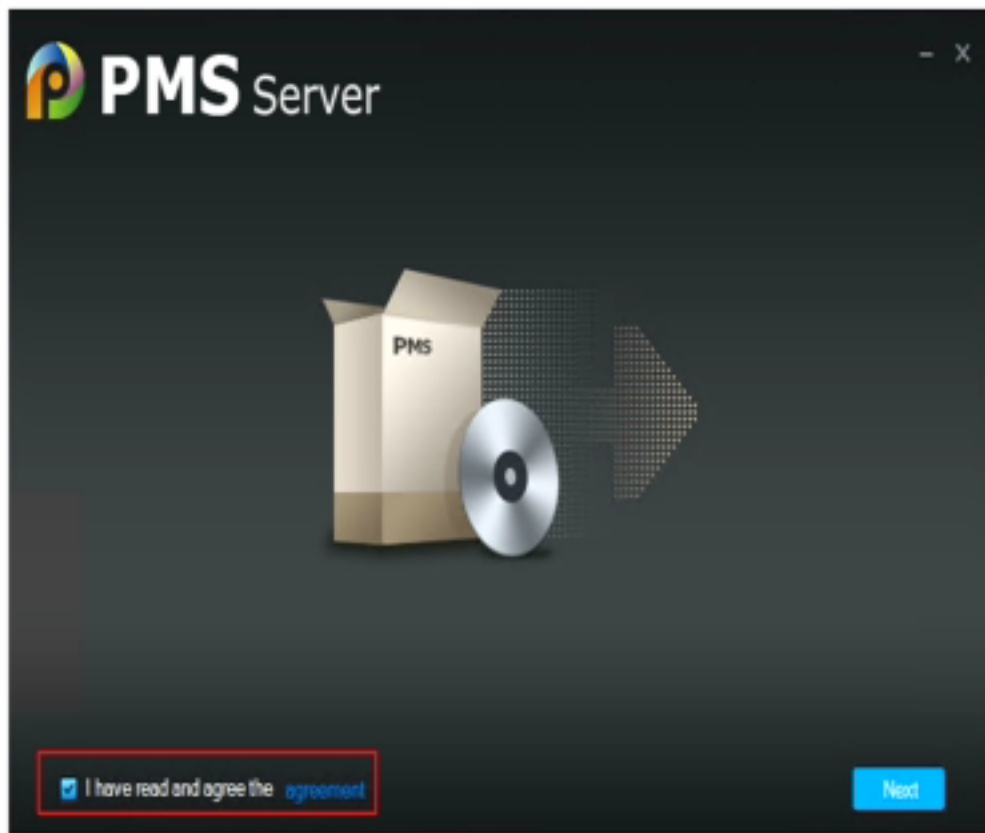
1.1 Installing PMS Server

Step 1 Double-click the PMS installation package: *General_PMS_Eng_Vxxx.R.xxx.exe*.

The installation interface shown in the following figure is displayed.

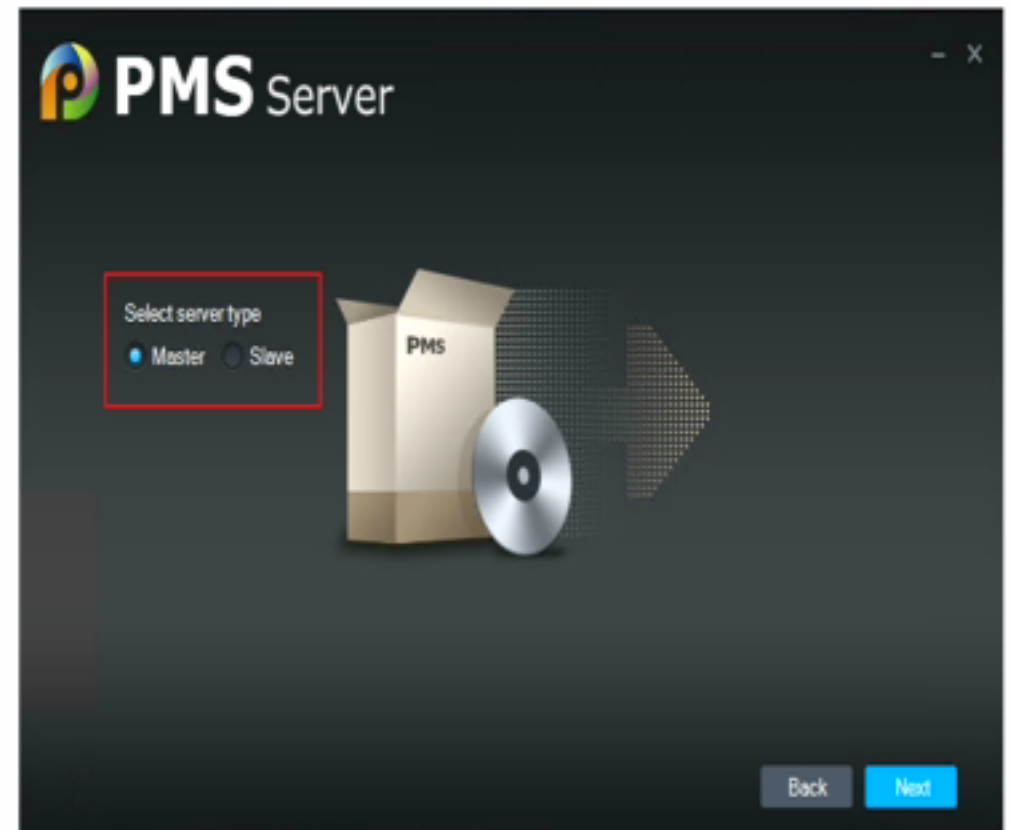


Step 2 Read and make sure that you have fully understood the **agreement**, and then select the check box before **I have read and agree the agreement**.



Step 3 Click **Next**.

The interface of selecting server type is displayed.



Step 4 Select **Master** as the server type, and then click **Next**.

The interface of setting installation path is displayed.



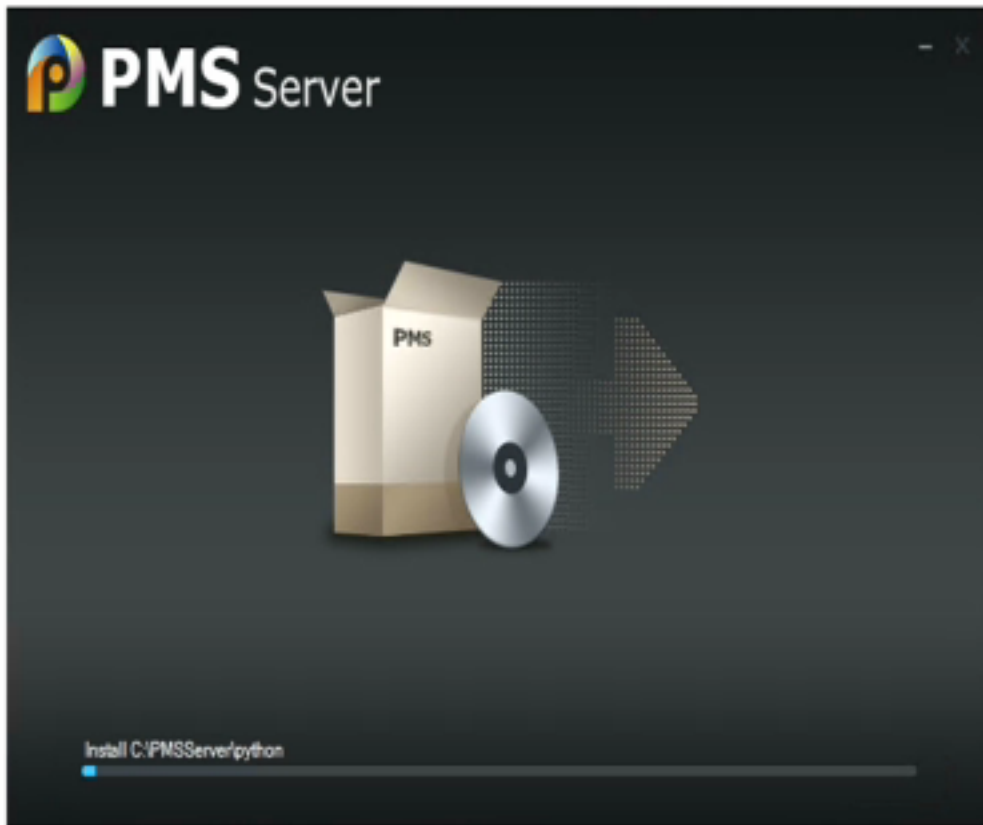
Step 5 Select the installation path.

- The default installation path is the root directory of C drive. The installer will automatically detect the remaining space of the selected drive, and show the remaining space as well as the installation space required by the PMS server.
- Click **Browse** to change the installation path of the PMS server.

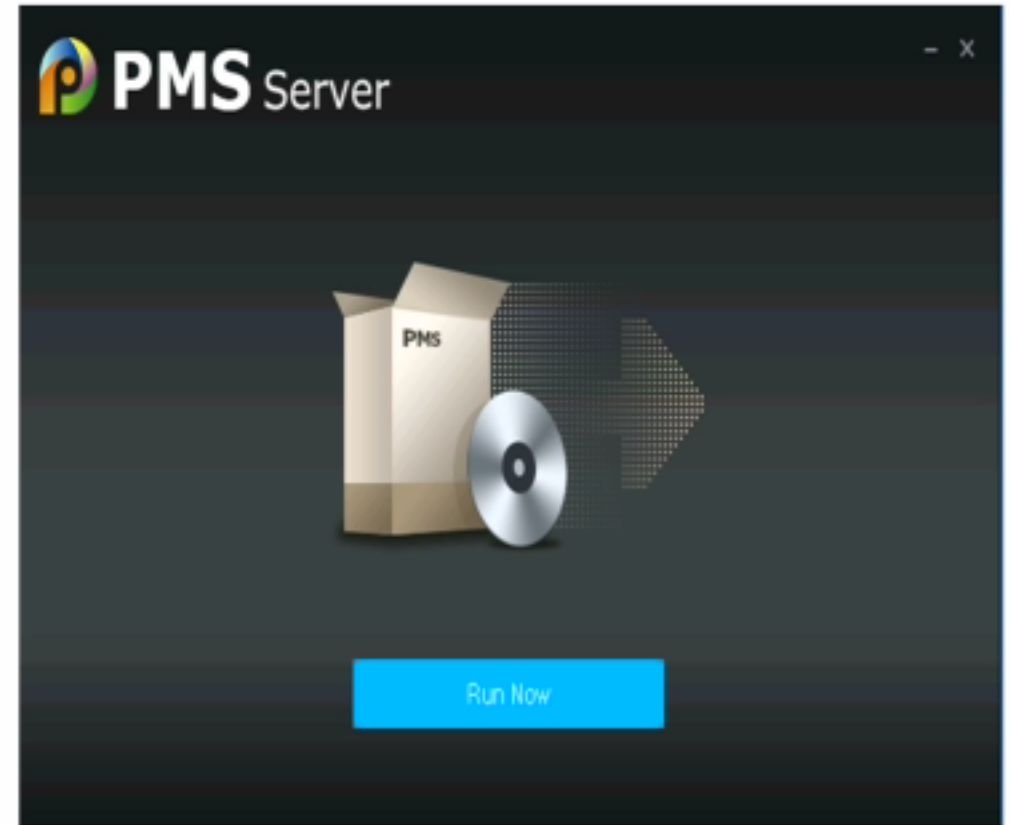


Step 6 Click **Install**.

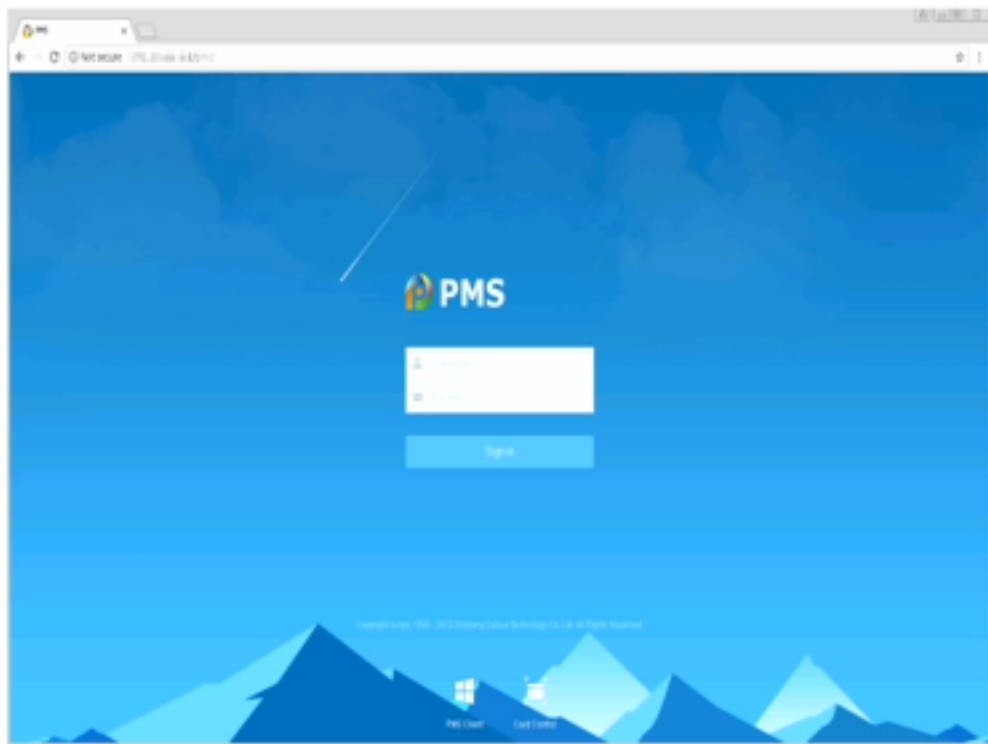
The installation progress interface is displayed. The installation might need 1–3 minute(s), depending on the performance of PC.



Step 7 After installation, click **Run Now** to start the server right now.

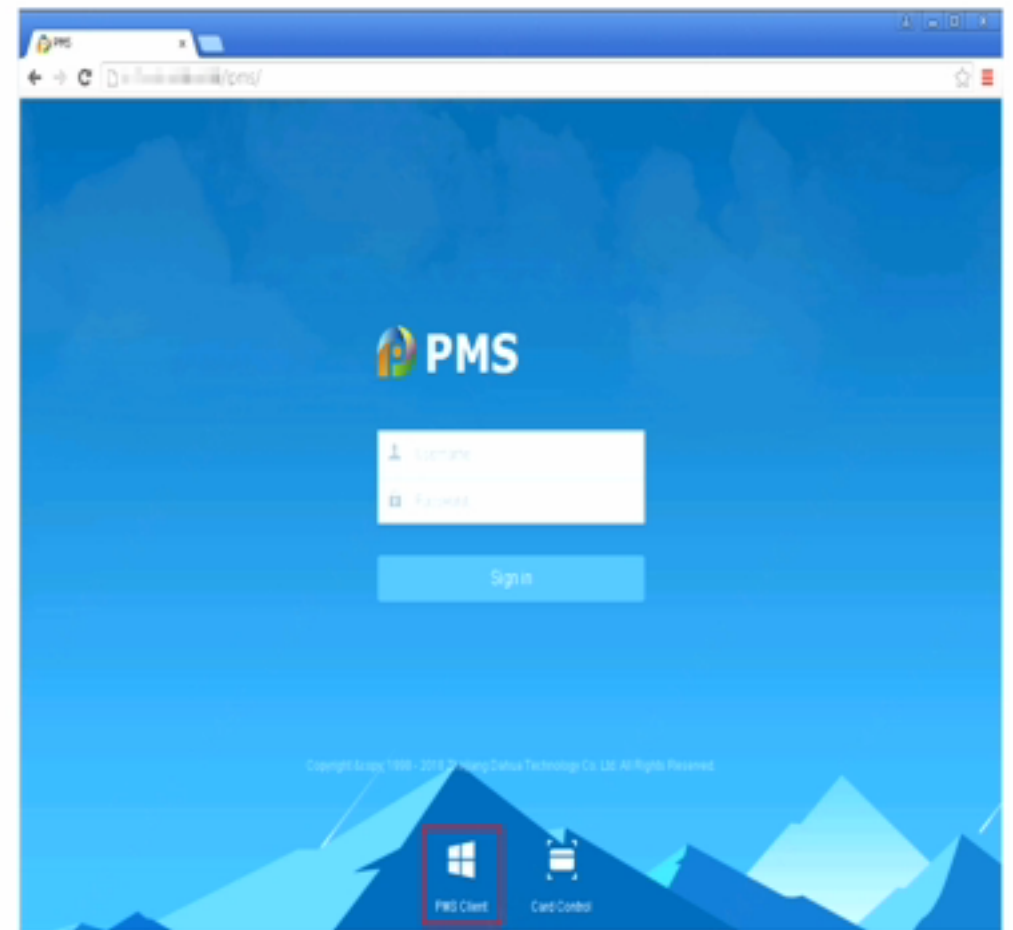


Step 8 You can also open a browser, enter the IP address of PMS server in the address bar, and then the **Sign in** interface is displayed. This means the server is successfully installed. If the interface is not displayed as shown in the following figure, uninstall the program, and install the server again.

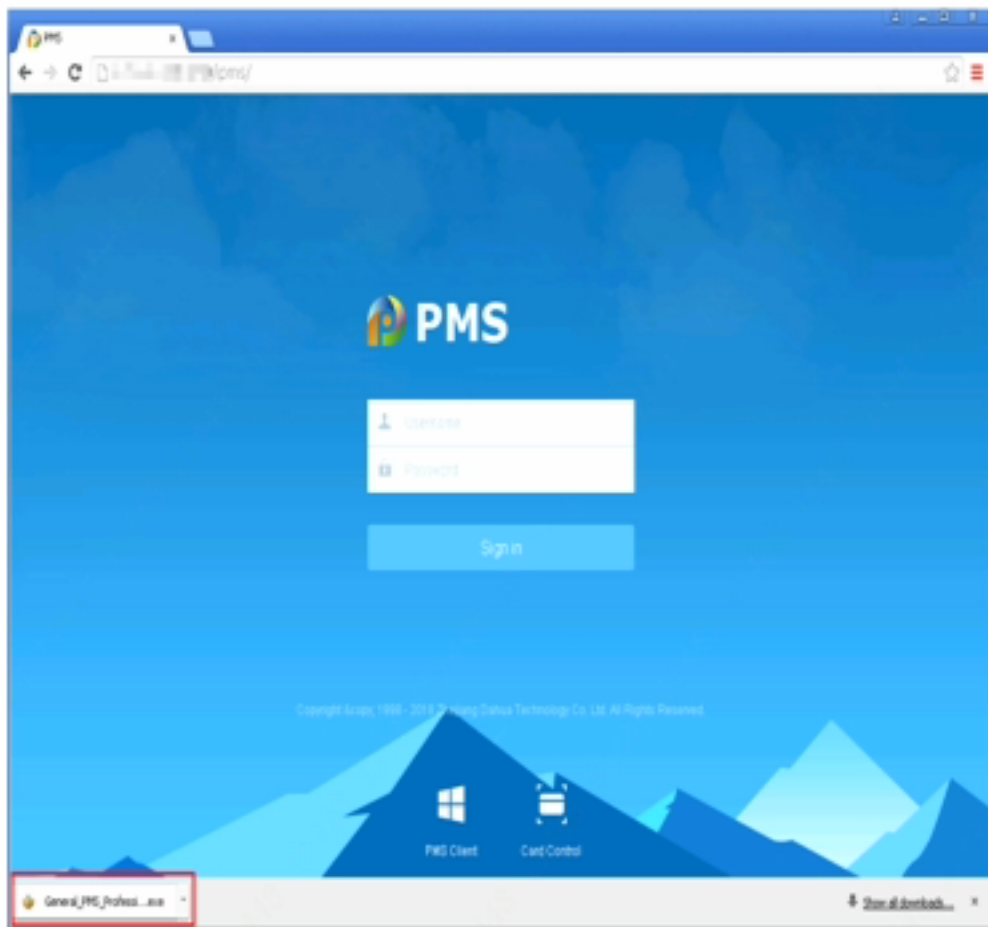


1.2 Installing PMS Client

Step 9 Click  on the **Sign in** interface of PMS web interface. The system starts downloading the installation program.



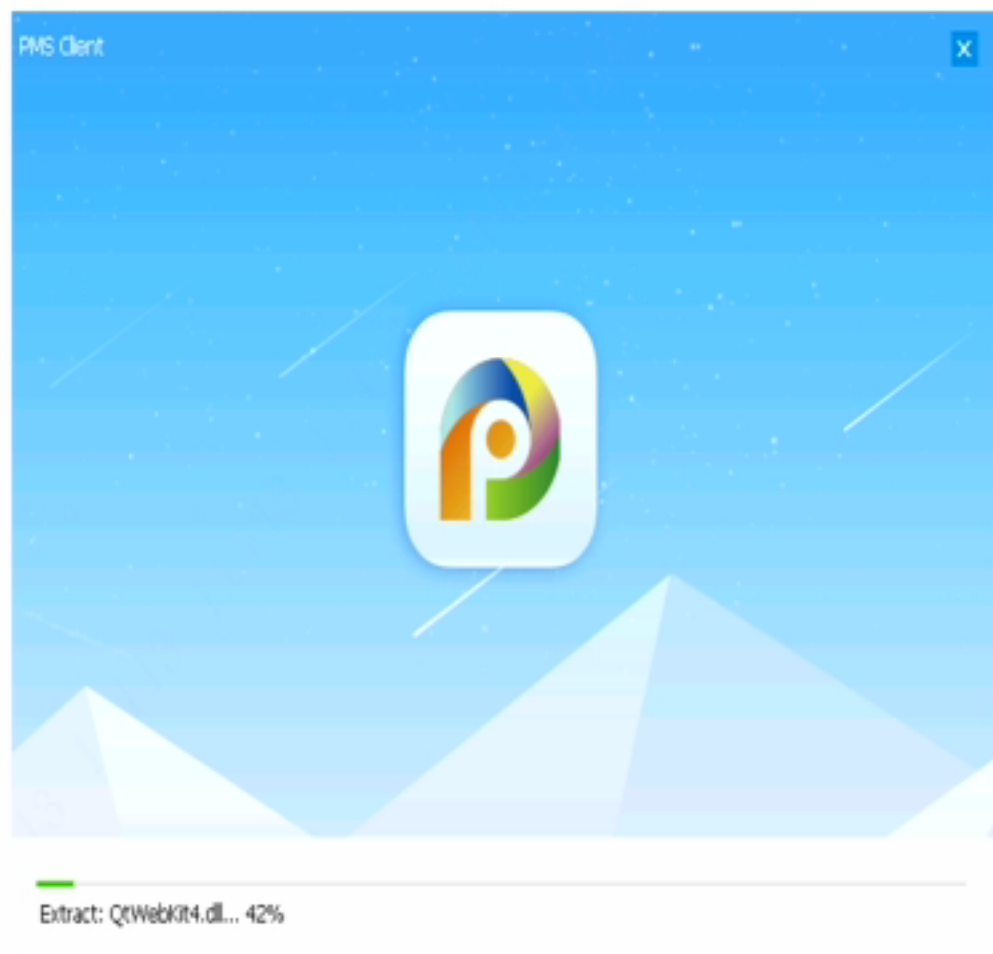
Step 10 After downloading, click the .exe file to install the PMS client.



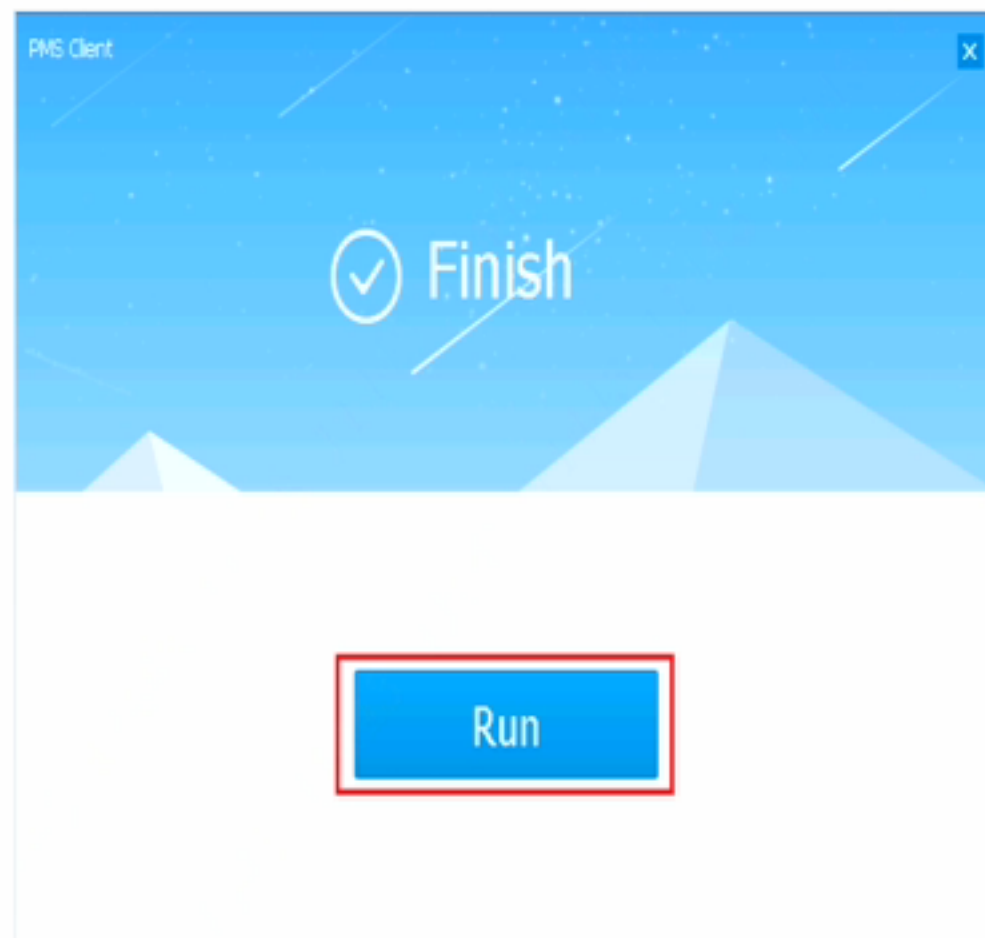
Step 11 Read and make sure that you have fully understood the **License** agreement, and then select the check box before **Do you agree to PMS License**.



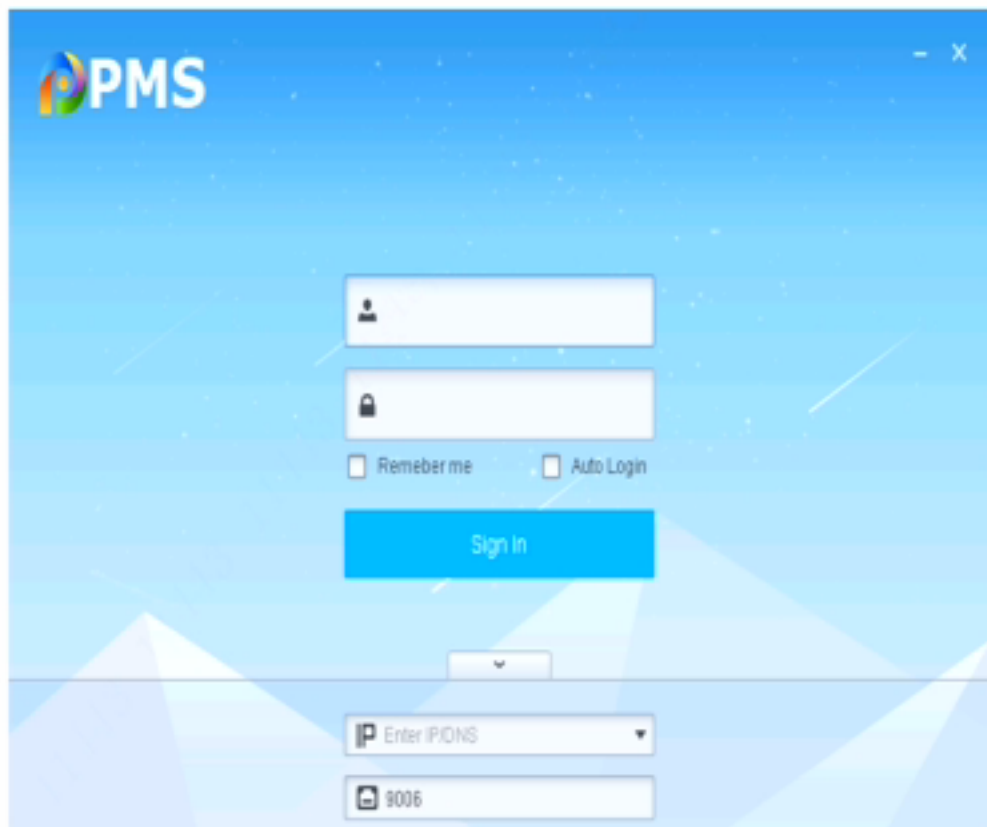
Step 12 Click **Quick Install** to start installation, or click **Custom Install** to set the installation path.
The installation progress interface is displayed.



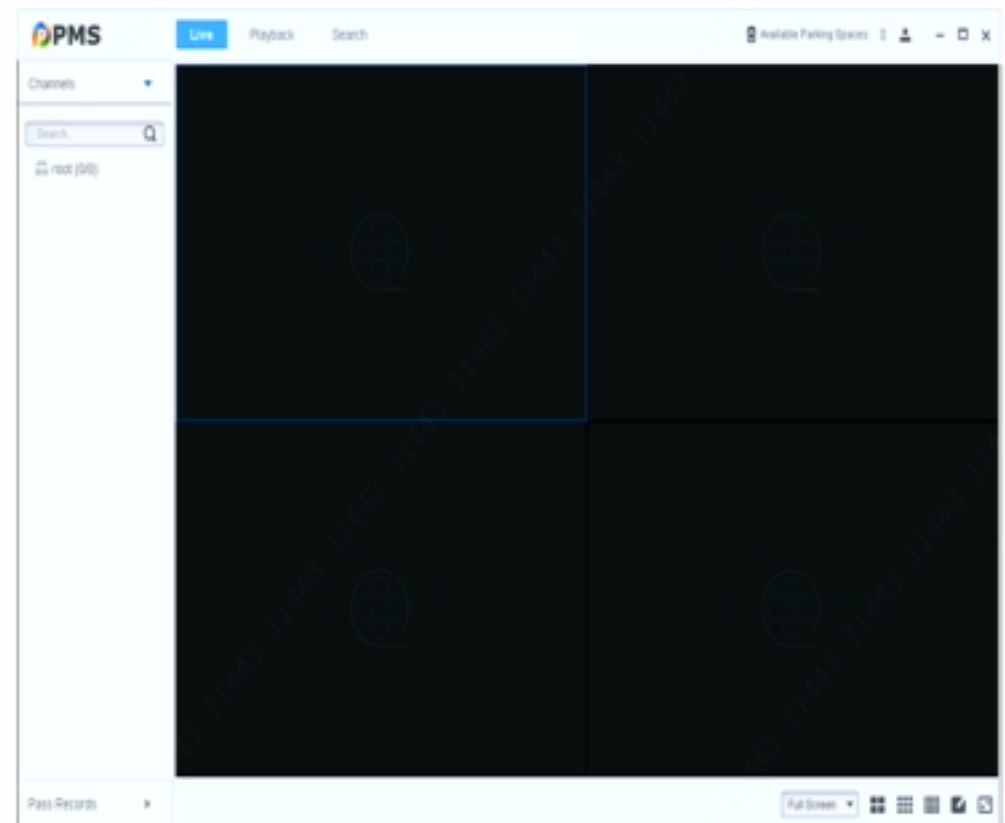
Step 13 After installation, click **Run** to start the PMS client.



Step 14 On the **Sign in** interface of PMS client, enter the username, password, and IP address of PMS server, and then click **Sign in** to log in the client.



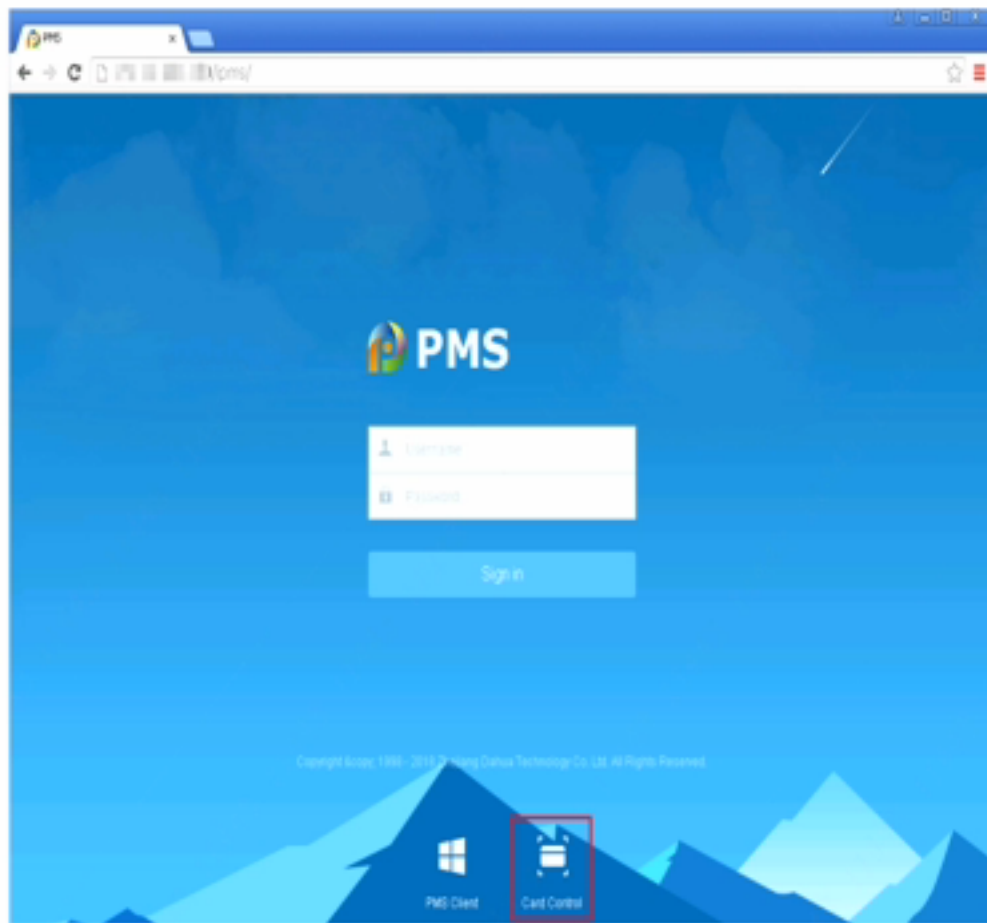
Step 15 After successful login, the **Live** interface is displayed. For operation details, see the user's manual.



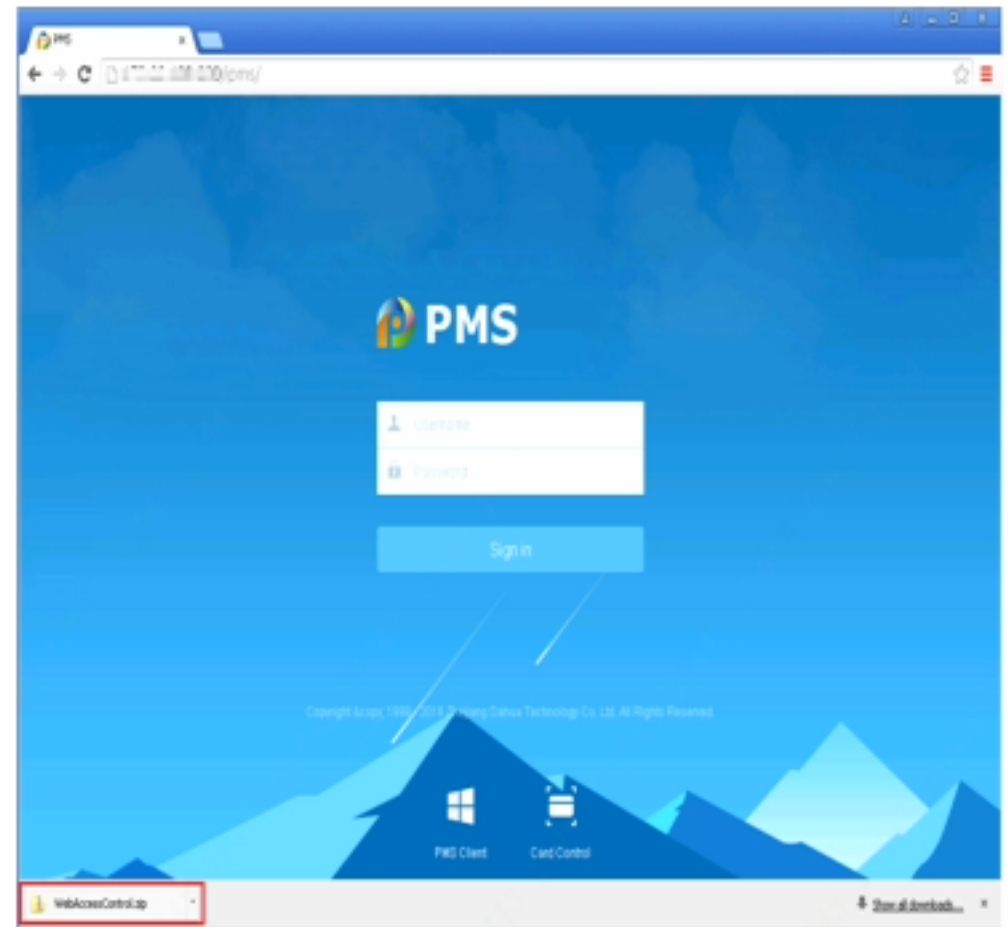
1.3 Installing Card Control

It is necessary to install the card control; otherwise, the card reader might not be able to read the parking card information.

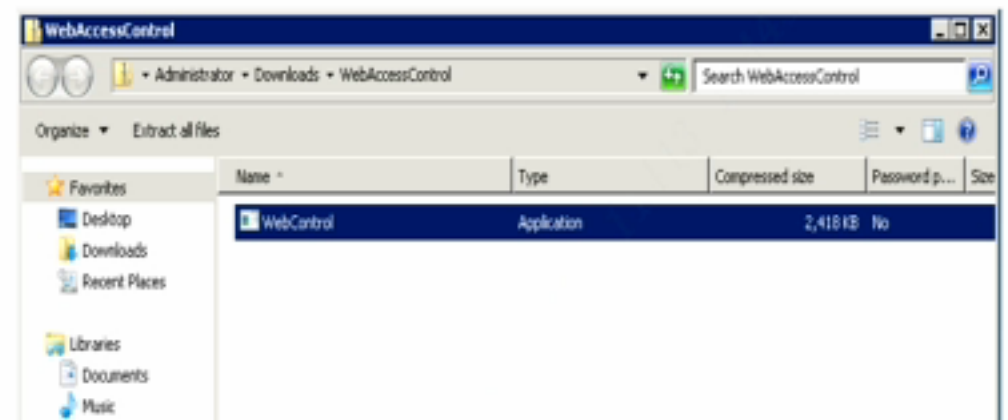
Step 1 Click  on the **Sign in** interface of PMS web interface.
The system starts downloading the installation program.



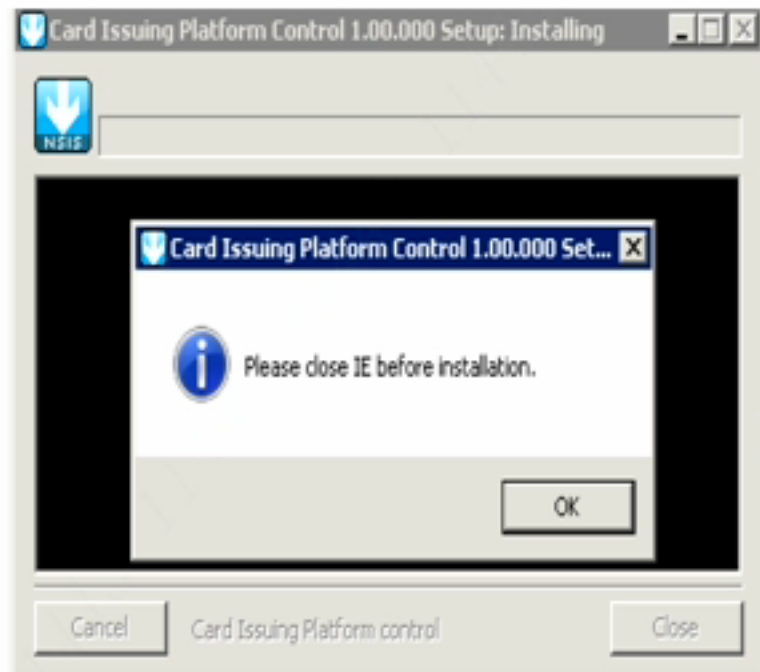
Step 2 After downloading, decompress the .zip file.



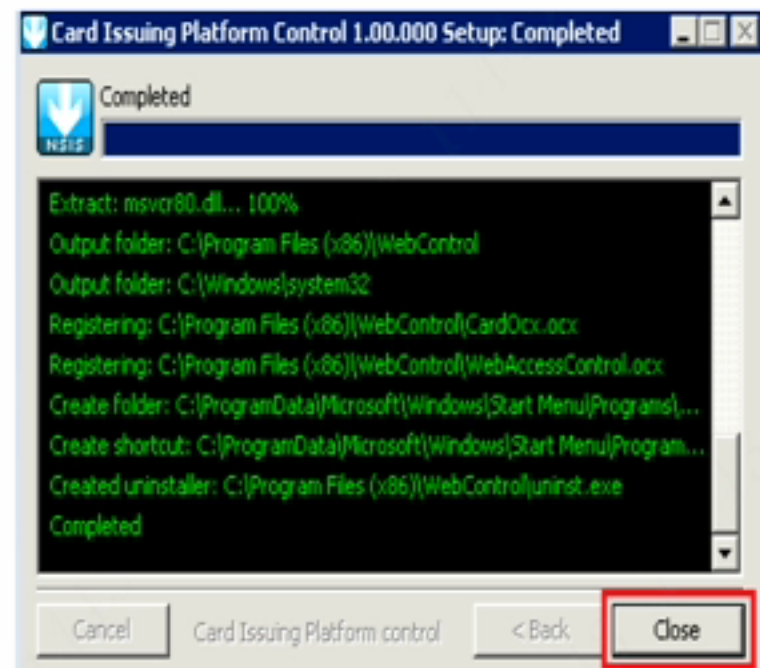
Step 3 Double-click the **WebControl** file as shown below to install the card control.



If the browser is not closed, click OK to closed it first according to the system message; otherwise, the installation might fail.



Step 4 After installation, click **Close** to finish installation.



For more details of operations, see the user's manual.