



DH_NVR5XXX-IL_MultiLang_V4.002.000000 0.0.R.210811

Release Notes



Legal Information

Copyright

© 2021 ZHEJIANG DAHUA VISION TECHNOLOGY CO., LTD. All rights reserved.

This document cannot be copied, transferred, distributed, or saved in any form without the prior written permission of Zhejiang Dahua Vision Technology Co., LTD (hereinafter referred to as "Dahua").

The products described in this document may contain the software that belongs to Dahua or the third party. Without the prior written approval of the corresponding party, any person cannot (including but not limited to) copy, distribute, amend, abstract, reverse compile, decode, reverse engineer, rent, transfer, sublicense the software.

Trademarks

, , , and **HDCVI** are the trademarks or registered trademarks of Dahua.

All other company names and trademarks mentioned herein are the properties of their respective owners.

Disclaimer

- These release notes are for reference only, and the actual product shall prevail.
- Succeeding products and release notes are subject to change without notice.
- If there is any uncertainty or controversy, please refer to our final explanation.

Table of Contents

Legal Information	I
Release Notes	1
1.1 Overview	1
1.2 Product Introduction	1
1.3 New Features.....	2
1.4 Fixed Bugs	4
1.5 Instructions for New Features	4
1.5.1 New languages Supported: Traditional Chinese and Japanese	4
1.5.2 Privacy Masking	4
1.5.3 One-click disarming.....	5
1.5.4 PoE Enhancement Mode.....	6
1.5.5 Cloud Update Reminder	7
1.5.6 License Exception Notification.....	7
1.5.7 Intelligent Diagnosis.....	7
1.5.8 AI Search.....	8
1.5.9 Advanced Customer Counter and Frequency-based Alarm	10
1.6 Compatibility.....	15
1.7 Software Environment.....	15
1.8 Pending Issues	19
1.9 Update Guide	19

Release Notes

1.1 Overview

Item	Description
Product name	Network Video Recorder
Version	V4.002.0000000.0
Software package information	DH_NVR5XXX-IL_MultiLang_V4.002.0000000.0.R.210811.zip
Onvif version	2.4.1
OS requirement	None
Release date	August 11, 2021

1.2 Product Introduction

This product is mainly used indoors. Combined with IP cameras, you can use this NVR to complete real-time monitoring and recording. It supports configuring basic parameters, and you can build a security monitoring network through web or other professional software developed by Dahua. Product functions include real-time monitoring, record playback, alarm and other auxiliary configuration functions.

1.3 New Features

Features	Description
Language	<ul style="list-style-type: none"> Added traditional Chinese and Japanese. The default language is changed from English to traditional Chinese for Hong Kong, China; Macau, China; Taiwan, China.
Privacy masking	<ul style="list-style-type: none"> Enable or disable the privacy masking function of camera. According to the camera capabilities, it supports drawing multiple privacy masking areas. Mosaic and color lump are available, and the color lump supports 8 colors. Configure privacy masking by controlling the rotation of PTZ camera.
Illuminator	Configure camera illuminator.
SMD (AI by recorder)	SMD of AI by recorder does not rely on the frame data of camera motion detection. It is calculated and displayed by the device algorithm, which greatly improves the intelligent effect.
Remote device	<ul style="list-style-type: none"> Supports plug-and-play. Supports automatically switching to H.265 for encoding. Supports automatically adding uninitialized cameras.
One-click disarming	<ul style="list-style-type: none"> Supports one-click disarming, which is disabled by default. Supports disarming by period. Users can disarm in the set time period, and cancel disarming out of the period. Supports individually disarming linkages such as Buzzer, Show Message, Alarm-out Port and Send Email. The Live interface uses a bell icon on the upper-right corner of video channels to display disarming status. The intact bell icon is displayed by default, and when disarming is enabled, the bell icon is displayed with a slash. Supports synchronizing disarming configuration from remote IPCs. Supports enabling and disabling disarming on the upper-right corner of video channels on Live interface. Supports one-click disarming function on client software such as DMSS client.
PoE enhancement mode	The transmission speed of PoE port is limited to 10 Mbps mode, which increases the transmission distance.
Cloud update reminder	Enable Auto-Check for Updates and System Update Notifications . When the device detects that the cloud update version is available, it supports the cloud update reminder after login.
Web password resetting	You can reset web password through linked email address.

Compatibility optimization of private protocol authentication mode.	When compatibility mode causes an abnormal IPC connection, the system prompts users to switch authentication mode.
Log for failed camera initialization	Displays error code and reason, and log when camera initialization failed.
License exception notification	If the license is missing or the verification fails, a warning icon will be displayed on the screen.
Independent update for algorithm	Supports independent update for different algorithm types, including models.
Attribute search of face comparison	Added name to the search condition on the Search by Attributes interface.
Intelligent diagnosis	When exception occurs, you can export data to check details.
AI search	<ul style="list-style-type: none"> • Displays AI search results by channel name or triggering period. • The face detection results can be displayed in time order. • The results of face comparison, IVS and stereo analysis can be displayed in time order. • The SMD results can be displayed in channel number, start time, and end time orders. • Supports search by multiple channels. • You can search by different periods, including today, yesterday, last 2 days, last 3 days, last 7 days, and custom.
PPE detection of camera	<ul style="list-style-type: none"> • Configure PPE detection. • Set PPE detection conditions, and then the device can trigger alarm linkage according to different conditions of face and body image. • Displays PPE detection results.
Video metadata for report search	<ul style="list-style-type: none"> • Displays video metadata statistics in bar chart or line chart. • Export video metadata statistics in report.
Advanced customer counter and frequency-based alarm	<ul style="list-style-type: none"> • Displays the number of passenger flow in a period. • Supports displaying and exporting face statistics in in bar chart or line chart. • Quickly detects and triggers alarm when a loitering suspect occurs.
Vehicle density	<ul style="list-style-type: none"> • Supports vehicle density statistics for two scenes: When the road is congested or the parking upper limit is reached. • Draw area rules for vehicle density statistics. • Supports alarm linkage.
Crowd density for report search	<ul style="list-style-type: none"> • Displays face statistics in in bar chart or line chart. • Export crowd density statistics in report.
Alarm input optimization	The one-click disarming function can be linked with local alarm.
Backup optimization	Multiple channels are available for backup search.
Cloud platform	Supported accessing cloud platform.
Web interface optimization	The plug-in browser supports search by image and face database registration.

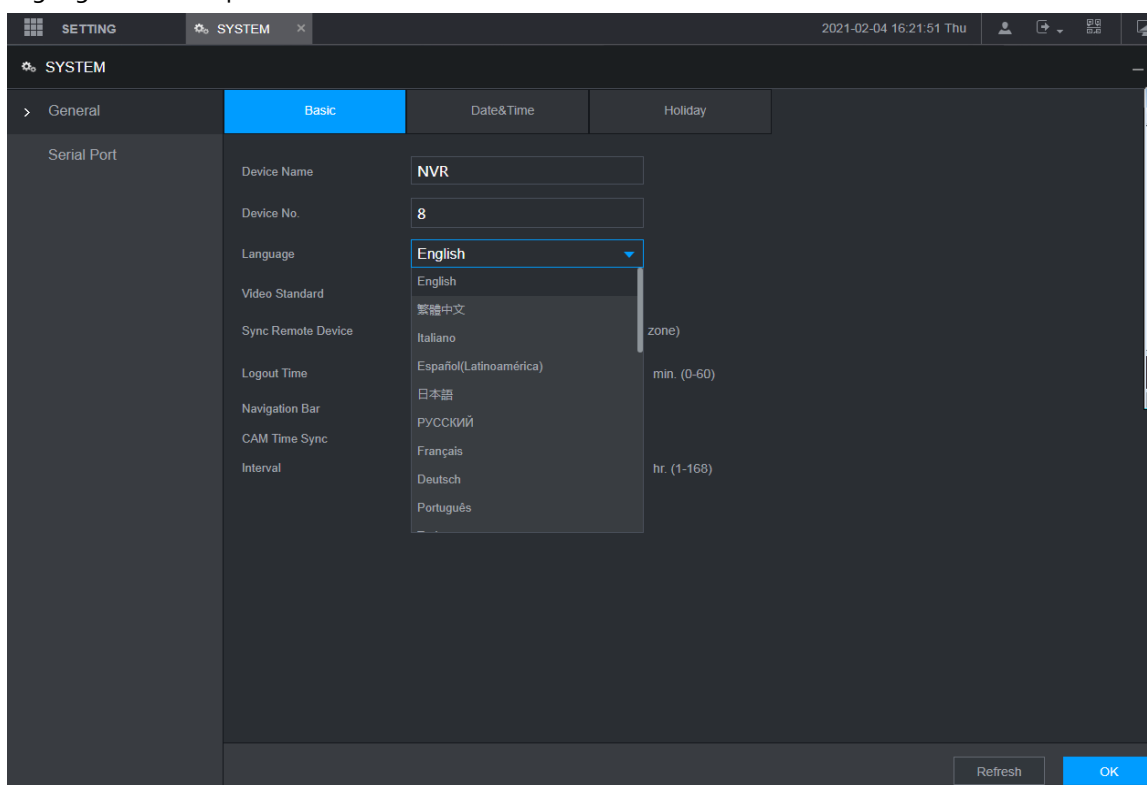
1.4 Fixed Bugs

None.

1.5 Instructions for New Features

1.5.1 New languages Supported: Traditional Chinese and Japanese

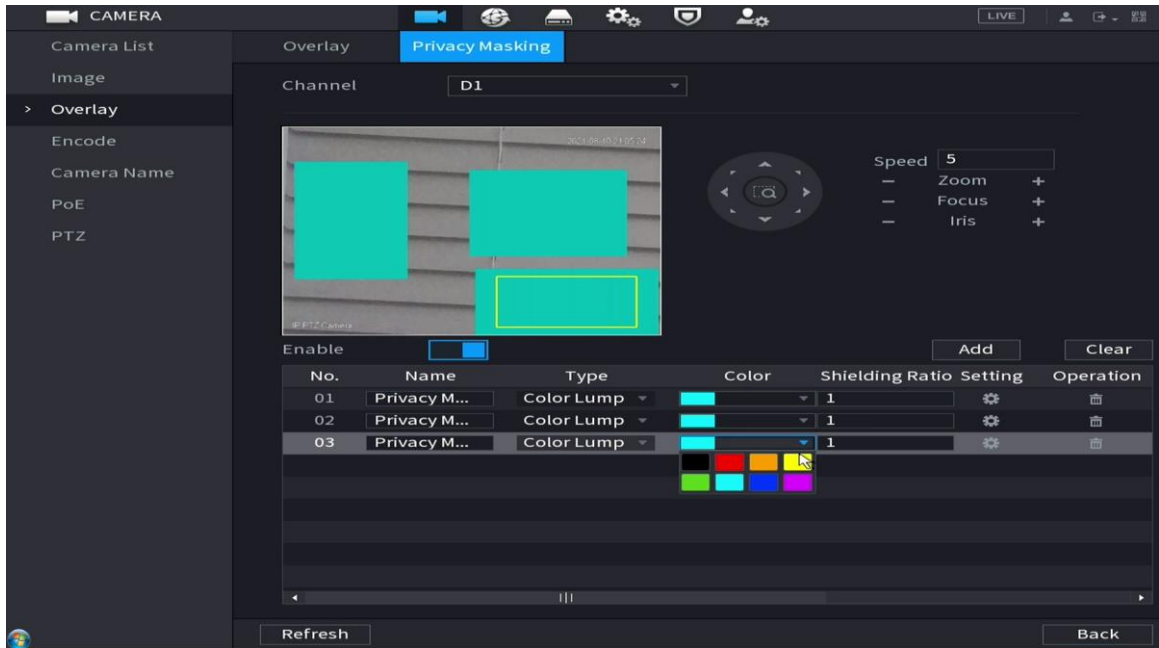
This release supports two new languages: Traditional Chinese and Japanese. You can set those languages in start-up wizard or in **SYSTEM > General > Basic**.



1.5.2 Privacy Masking

The corresponding camera can realize different type of privacy masking, including color lump and mosaic.

On the main interface, select **SETTING > CAMERA > Privacy Masking**, select a channel, and then click Add to set the masking rule of color lump.



For privacy masking rules, you can set rule name, type, color, and shielding ratio.

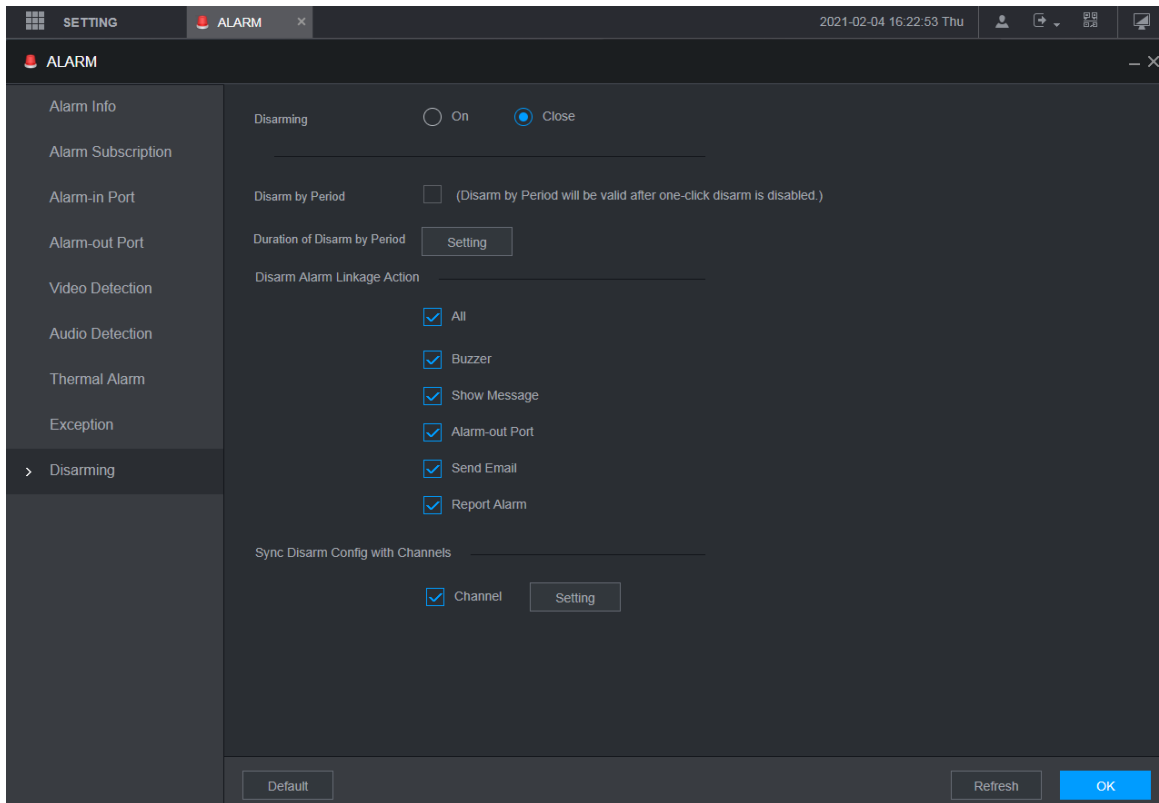


1.5.3 One-click Disarming

Support one-click arm or disarm alarm linkage actions in ALARM > Disarming.

Supports disarming by period. You can disarm in the set time period, and cancel disarming out of the period.

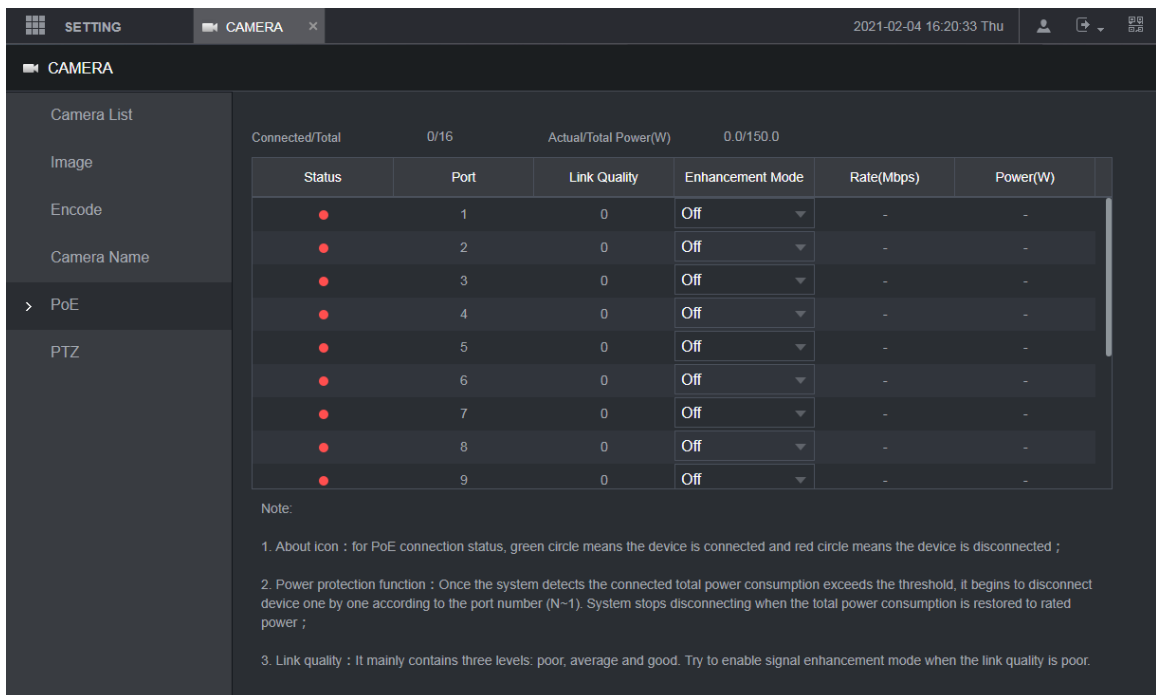
Supports synchronizing disarming configuration from remote IPCs.



1.5.4 PoE Enhancement Mode

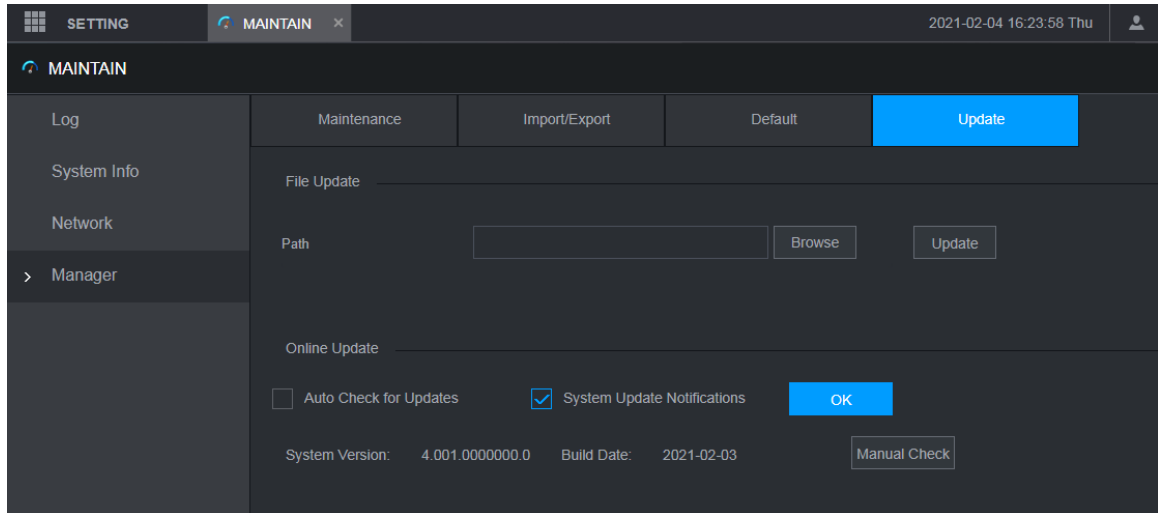
PoE port is limited to 10 Mbps mode, which increases the transmission distance.

With Enhancement Mode on, the port reduces the rate to 10 Mbps and has an effective transmission distance of up to 200 meters. With Enhancement Mode off, the maximum rate of the port can be up to 100 Mbps. The function is disabled by default.



1.5.5 Cloud Update Reminder

Enable **Auto-Check for Updates** and **System Update Notifications**. When the device detects that the cloud upgrade version is available, it supports the cloud upgrade reminder after login.



1.5.6 License Exception Notification

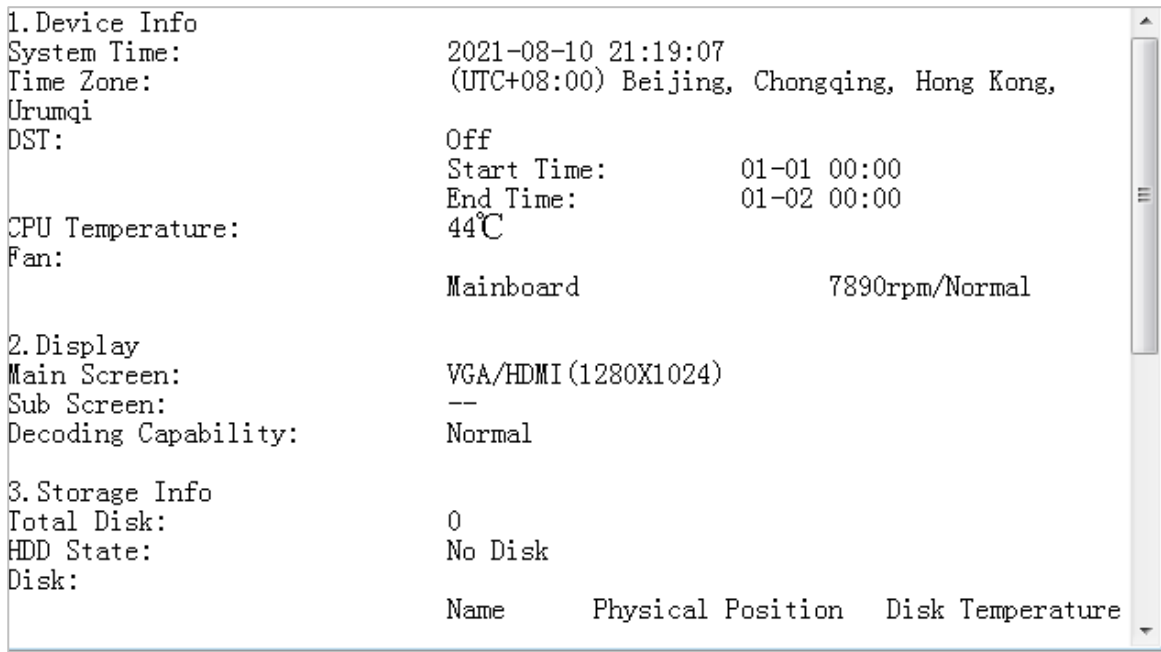
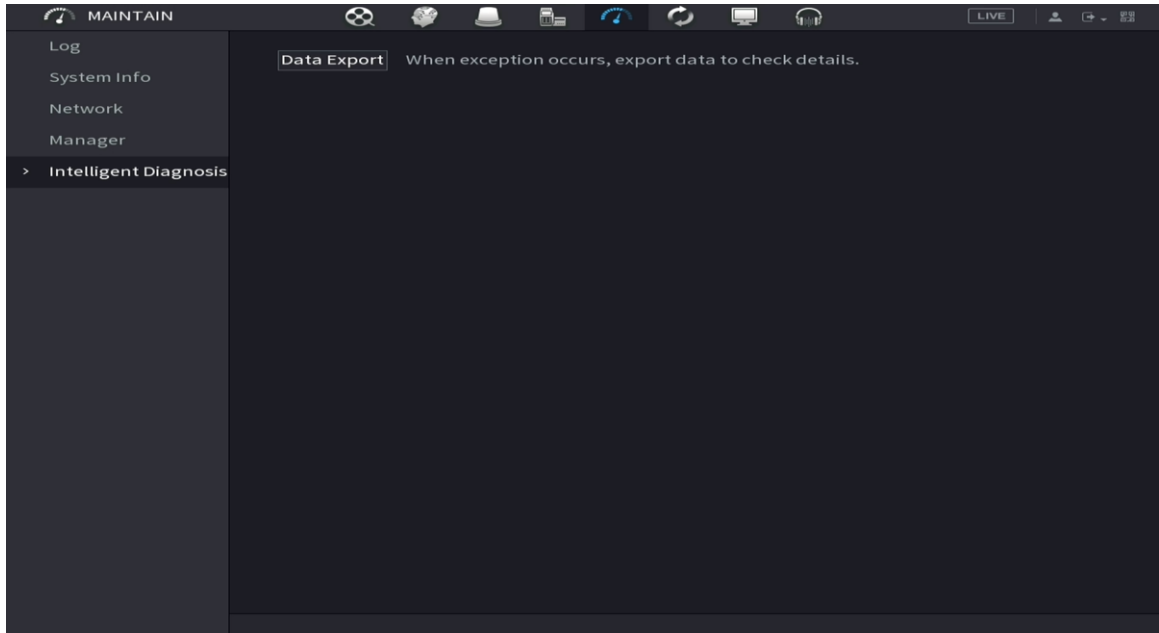
The device will verify license during booting up. If the verification failed, the following icon will be shown on the screen, contact the after-sale service for further information. This function is available on selected models.



1.5.7 Intelligent Diagnosis

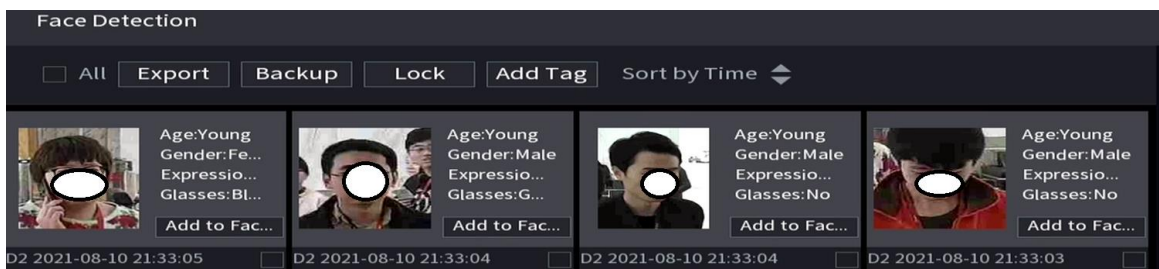
You can export the current system time, device status, display and output status, hard disk information, remote device offline and video tampering situations.

On the main interface, select **MAINTAIN > Intelligent Diagnosis**, and then click **Data Export**.

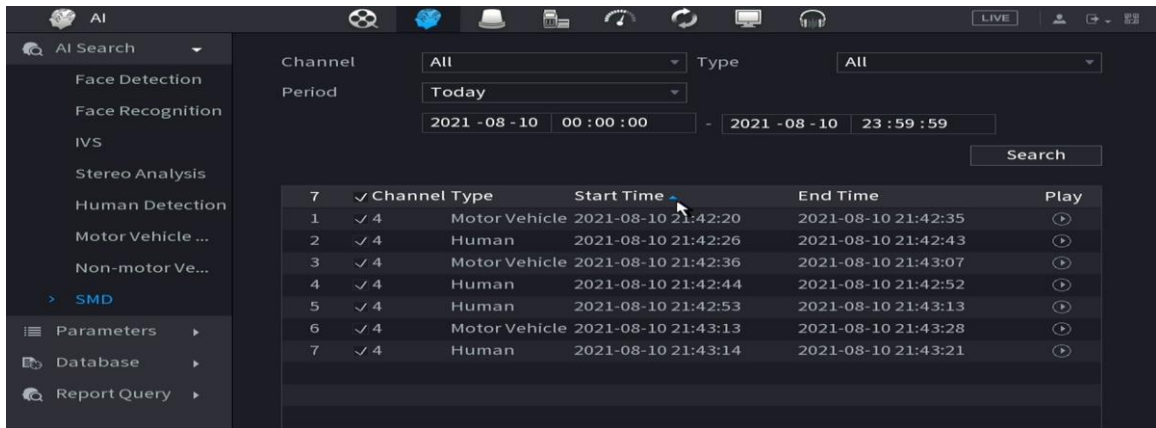


1.5.8 AI Search

The intelligent search results can be displayed in time order. Click the event sorting direction arrow, and you can select to display the results in the positive or reverse order.



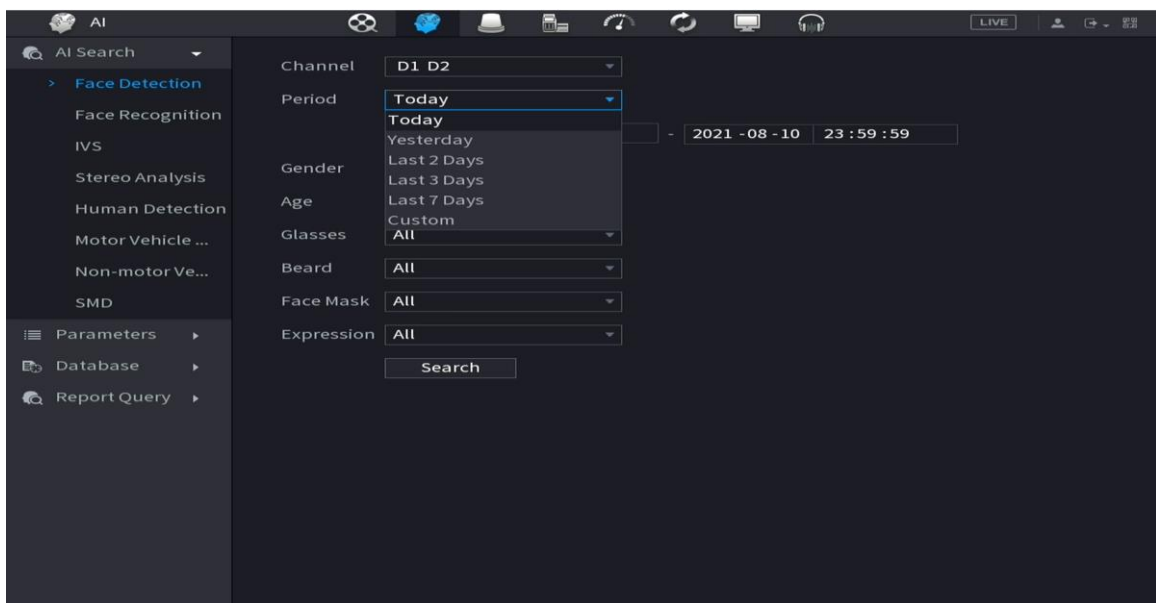
The SMD searching results can be displayed in the order of channel, start time, and end time.



You can select multiple channels.



You can search by different periods, including today, yesterday, last 2 days, last 3 days, last 7 days, and custom.



1.5.9 Advanced Customer Counter and Frequency-based Alarm

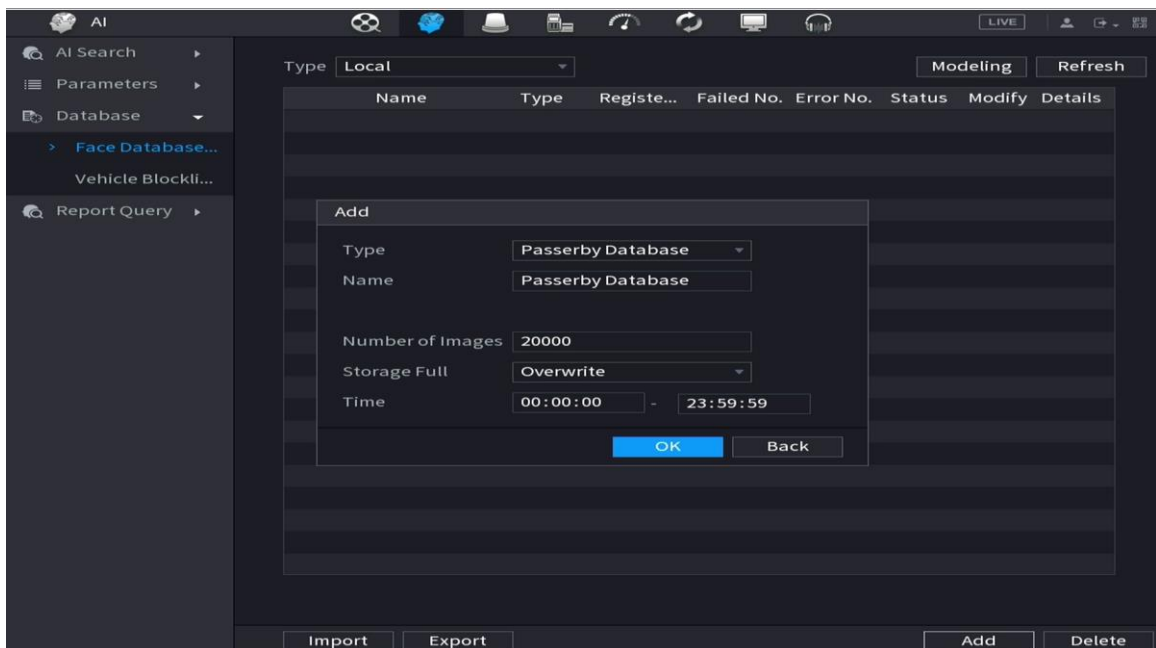
Advanced Customer Counter

Step 1 On the main interface, select **AI > Database > Face Database Config**, and then click **Add** to create a passerby database.



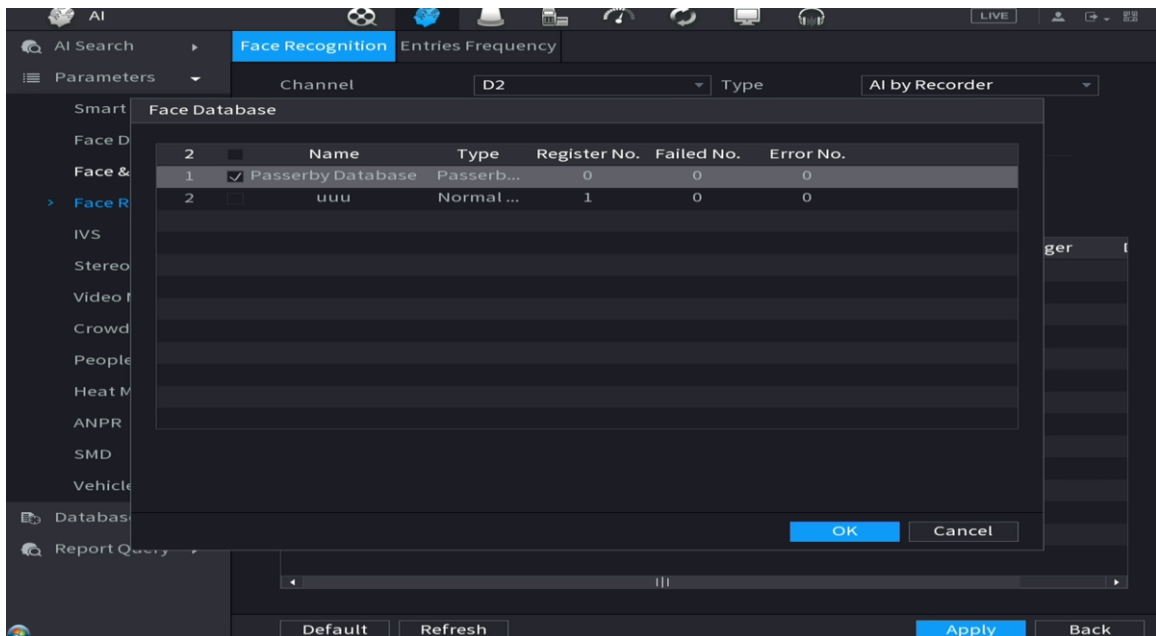
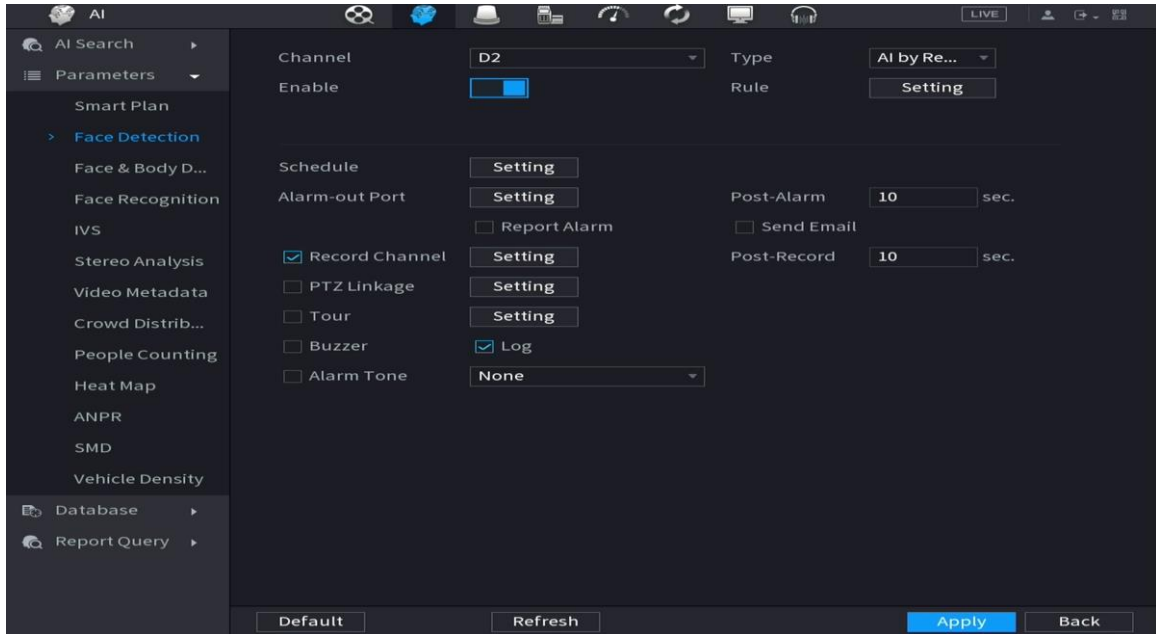
You can only add a single passerby database.

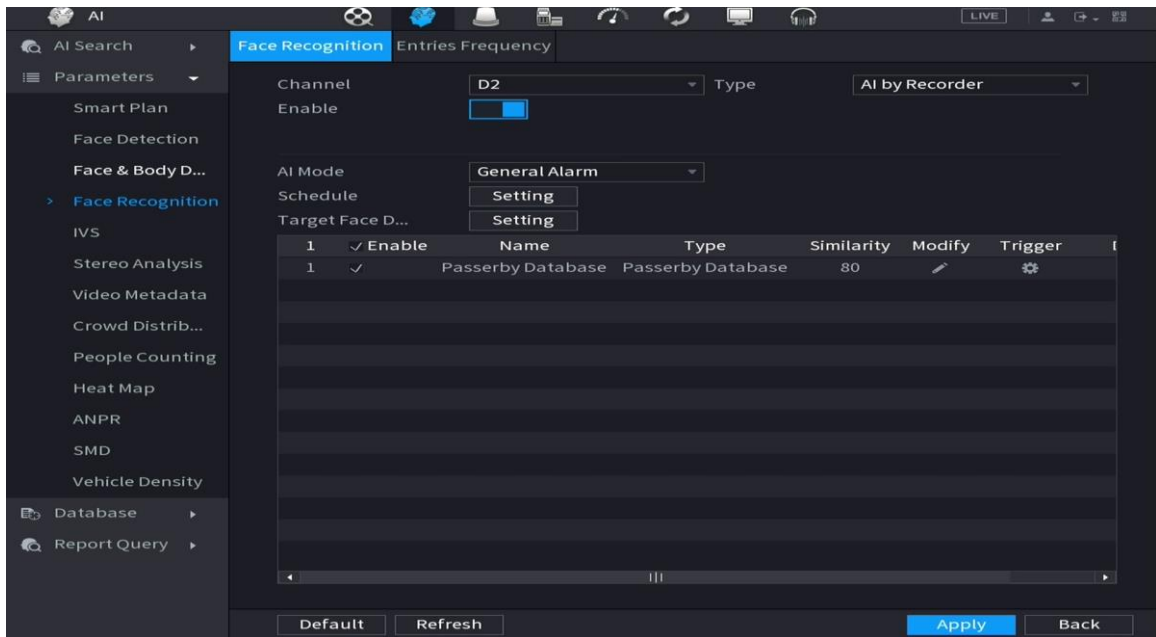
- Time: Accurate statistics after deduplication in this period. It is 0:00:00–23:59:59 every day by default.
- After the passerby database is successfully added, the passerby database is empty, and there will be images only after the arming function is enabled.



Step 2 On the main interface, select **AI > Parameters > Face Detection**, select a channel, and then select **Enable**.

Step 3 On the main interface, select **AI > Parameters > Face Recognition**, select a channel, and then select **Enable**. Enable the arming function of the passerby database.

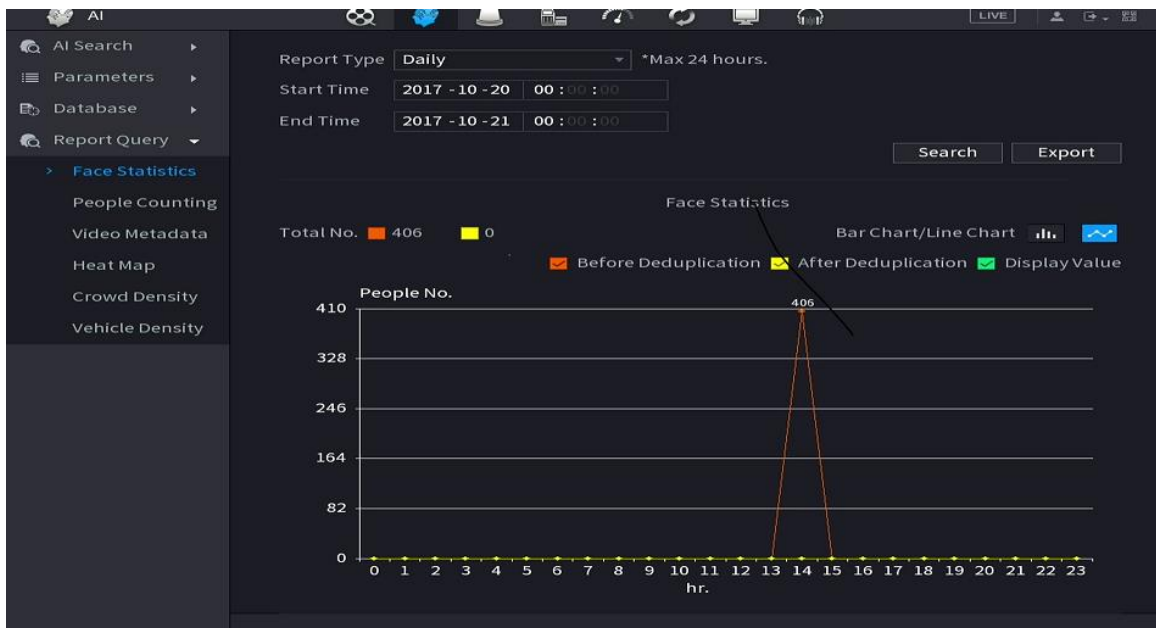




Step 4 On the main interface, select **AI > Report Query** to view report.

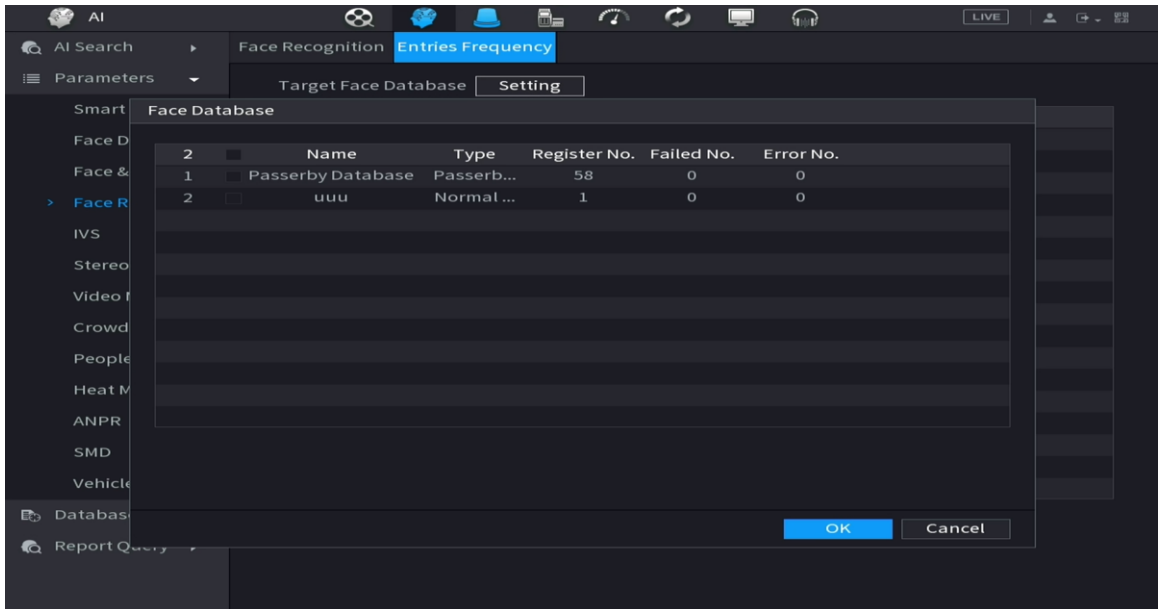
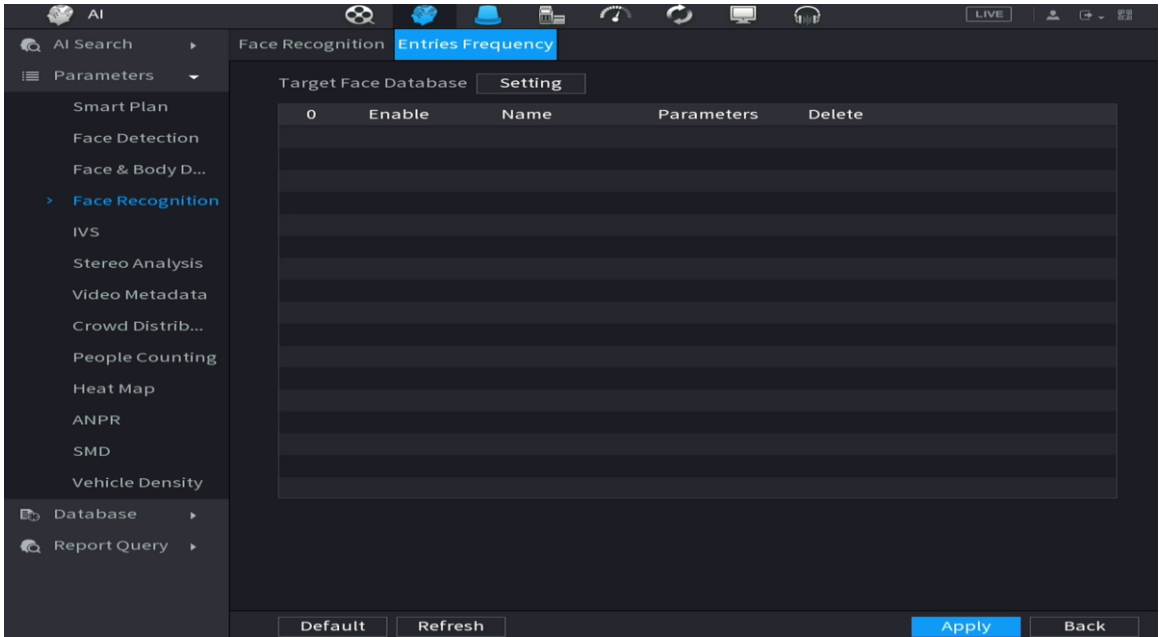


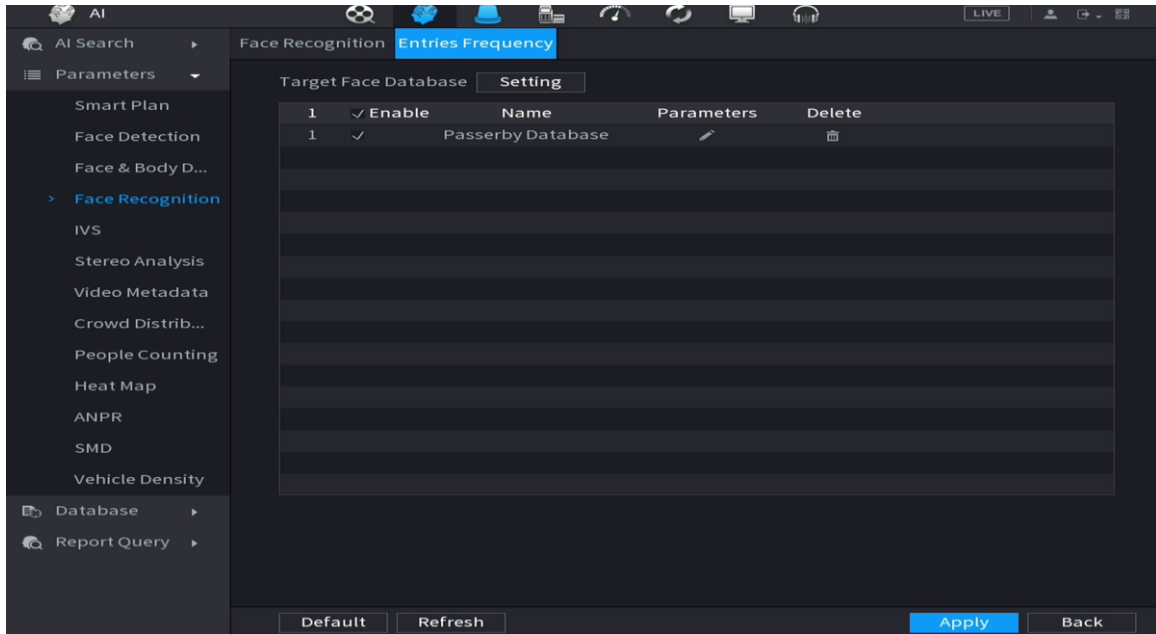
- You can search for daily, weekly, or monthly report.
- You can view statistics before deduplication or after deduplication. Statistics after deduplication is the accurate report of people flow.



Frequency-based Alarm

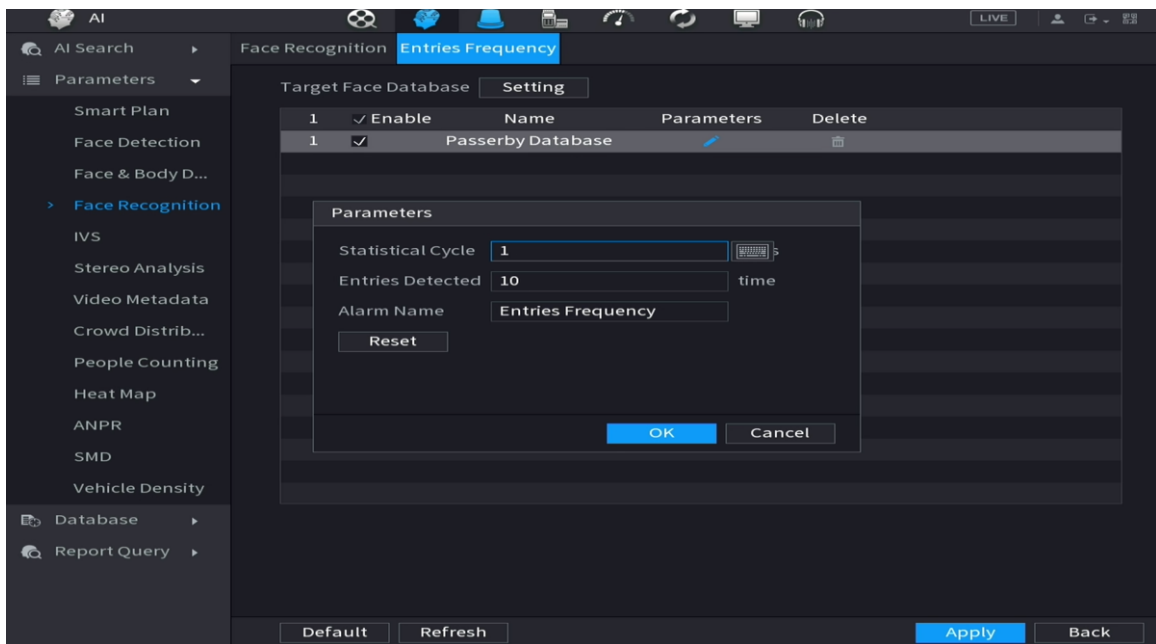
Step 1 On the main interface, select **AI > Parameters > Face Recognition > Entries Frequency**, and then enable the arming function of the passerby database.





Step 2 Edit parameters.

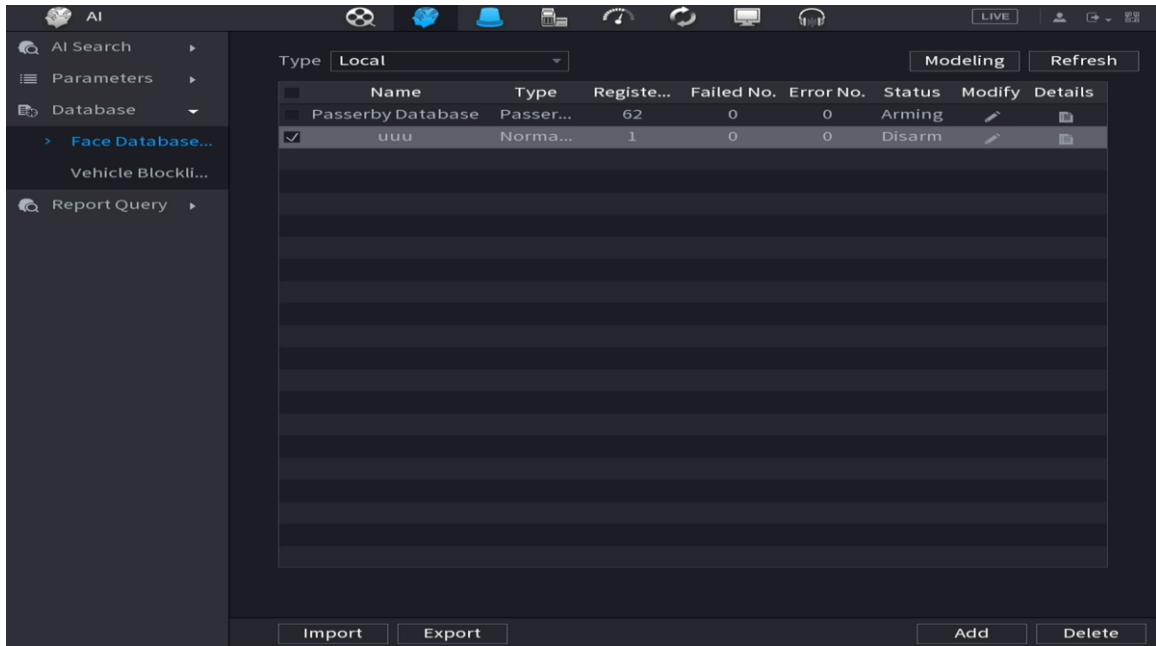
After the above configuration, the device can trigger alarms for person who frequently appears on the **Live** interface.



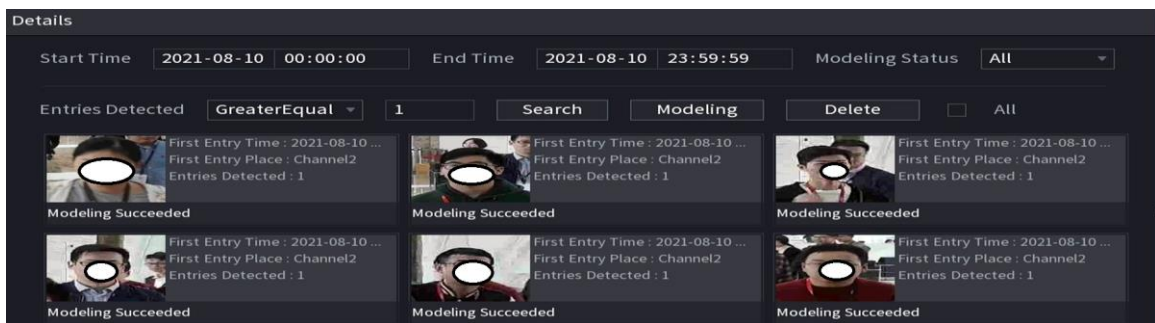
- Statistical cycle: Ranges from 1–30 days. It is 1 day by default.
- Entries detected: Ranges from 1–1200 times. It is 10 times by default.
- Alarm name: You can change the name. It is **Entries Frequency** by default.



You can click **Reset** to clear all the statistics. After the statistics is cleared, it needs to be recalculated.



Step 3 On the **Details** interface, set the number of entries detected to search for the filtered data.



1.6 Compatibility

None.

1.7 Software Environment

Model	Version
DH-IPC-HFW2231SN-S-0280B-S2	DH_IPC-HX2XXX-Molec_MultiLang_NP_V2.820.000000.28.R.210323.zip
DH-IPC-HDW2431TP-AS-0280B-S2	DH_IPC-HX2XXX-Molec_MultiLang_PN_V2.800.000000.24.R.201014.zip

Model	Version
DH-IPC-HFW2531TP-Z AS-27135-S2	DH_IPC-HX25(8)XX-Molec_MultiLang_PN_V2.820.0000000.28.R.210323.zip
DH-IPC-HFW2831TP-Z AS-27135-S2	DH_IPC-HX25(8)XX-Molec_MultiLang_PN_V2.820.0000000.28.R.210323.zip
DH-IPC-HDW3241TP-Z AS-27135	DH_IPC-HX3XXX-Leo_MultiLang_PN_Stream3_V2.800.0000000.21.R.201124.zip
DH-IPC-HFW3441TP-Z S-27135	DH_IPC-HX5(4)(3)XXX-Leo_MultiLang_PN_Stream3_V2.800.0000000.21.R.201124.zip
DH-IPC-HDBW5541EP-ZE-0735	DH_IPC-HX5XXX-Volt_MultiLang_PN_Stream3_V2.820.0000000.2.R.210403.zip
DH-IPC-HFW5442EP-ZE-2712	DH_IPC-HX5XXX-Volt_MultiLang_PN_Stream3_V2.820.0000000.2.R.210403.zip
DH-IPC-HDW5241TMP-AS-0280B	DH_IPC-HX5XXX-Volt_MultiLang_PN_Stream3_V2.820.0000000.2.R.210403.zip
DH-IPC-HDW5241TMP-AS-0280B	DH_IPC-HX5XXX-Volt_MultiLang_PN_Stream3_V2.820.0000000.2.R.210403.zip
DH-IPC-HDW5241TMP-AS-LED-0280B	DH_IPC-HX5XXX-Volt_MultiLang_PN_Stream3_V2.820.0000000.2.R.210403.zip
DH-IPC-HFW7442HP-Z-2712F-DC12AC24V	DH_IPC-HX8XXX-Nobel_MultiLang_PN_V2.800.0000000.5.R.200525.zip
DH-IPC-HDBW7442HP-Z-2712-DC12AC24V	DH_IPC-HX8XXX-Nobel_MultiLang_PN_V3.000.0000000.2.R.210712.zip
DH-IPC-HDBW7842HP-Z-2712F-DC12AC24V	DH_IPC-HX8XXX-Nobel_MultiLang_PN_V2.800.0000000.5.R.200525.zip
DH-IPC-HDBW7442HP-ZFR-2712F-DC12AC24V	DH_IPC-HX8XXX-Nobel_MultiLang_PN_V2.800.0000000.5.R.200525.zip
DH-IPC-HUM8231P-E2	DH_IPC-HX5X3X-Multi-Rhea_Eng_P_V2.622.0000000.35.R.200619.zip
DH-IPC-HDW8341XP-BV-3D-0280B	DH_IPC-HX8XXX-Dual-Lens-Nobel_MultiLang_PN_V2.800.0000000.12.R.201022.zip
DH-IPC-HDW8341XP-3D-0280B-S2	DH_IPC-HX8XXX-Dual-Lens-Nobel_MultiLang_PN_V2.800.0000000.12.R.201022.zip
DH-IPC-PDBW5831P-B360-E4-2712	DH_IPC-HX8(5)XXX-Sag_EngSpnFrn_PN_V2.800.0000000.5.R.200107.zip

Model	Version
DH-IPC-PDB4830P-B360-E4-0360B	DH_IPC-HX8(5)XXX-Sag_EngSpnFrn_PN_V2.800.0000000.5.R.200107.zip
DH-PSDW5631SP-B360-E4-D204-DC12V	DH_IPC-HX8(5)XXX-Sag_EngSpnFrn_PN_V2.800.0000000.5.R.200107.zip
DH-IPC-PDBW82041P-B360-E4-27135	DH_IPC-PDBW820XX-Fafnir_MultiLang_PN_Stream3_V3.000.0000000.1.R.210409.zip
DH-IPC-HFW3549T1P-AS-PV-0280B	DH_IPC-HX5XXX-Volt_MultiLang_PN_Stream3_V2.820.0000000.2.R.210403.zip
DH-IPC-HFW3849T1P-AS-PV-0280B	DH_IPC-HX3XXX-Dalton_MultiLang_PN_Stream3_V2.820.0000000.14.R.210412.zip
DH-IPC-HFW5442TP-AS-LED-0280B	DH_IPC-HX5XXX-Volt_MultiLang_PN_Stream3_V2.820.0000000.2.R.210403.zip
DH-IPC-PFW8840P-A180	DH_IPC-HX8XXX-Four-Nobel_MultiLang_PN_Stream3_V2.800.0000000.11.R.200826.zip
ITC237-PU1B- (IR)	General_ITC237-PU1B(PW1B)-IR(IRZ)(L)_Eng_PN_Oversea_Europe_V2.622.0000000.1.R.181114.zip
ITC215-PW6M-IRLZF	ShengChanTEST_ITC215-PW6M-IRLZF(LZF)_Eng_Autotest_V2.623.0000000.0.R.200714.zip General_ITC215(237)-PW6M-XXX_Eng_PN_Oversea_ITCPUSH_AreaSwitch_V2.625.0000000.2.R.210714.zip
ITC237-PW6M-IRLZF1050	General_ITC237-PW6M-IRLZF(LZF)_Eng_PN_Oversea_ITCPUSH_Europe_V2.623.0000000.0.R.191115.zip ShengChanTEST_ITC237-PW6M-IRLZF(LZF)_Eng_Autotest_V2.623.0000000.0.R.191209.zip
DHI-ITC952-AF3F	General_ITCX52-AF3F_Eng_P_Oversea_V2.822.0000000.0.R.200414.zip ShengChanTESTGeneral_ITCX52-AF3F_Eng_P_AUTOTEST_Oversea_V2.822.0000000.0.R.200414.zip
DHI-ITC352-AF3F	General_ITCX52-AF3F-(IR7)(IR8)_Eng_PN_Oversea_V2.822.0000000.0.R.201012.zip ShengChanTESTGeneral_ITCX52-AF3F-(IR7)(IR8)_Eng_PN_AUTOTEST_Oversea_V2.822.0000000.0.R.201012.zip
DHI-ITC431-RW1F-L	ShengChanTESTGeneral_ITCXX1-RW1F-IRL8(L)_Eng_N_Oversea_V2.822.0000000.0.R.201221.zip General_ITCXX1-RW1F-IRL8(L)_Eng_N_Oversea_V2.822.0000030.0.R.210709.zip
SDT5X225-2F-WA	General_SDT5XXXX-HN-WA-V_MCU_V2.401.0000000.58.R.191213.zip General_SD-Fafnir_MultiLang_PN_Stream3-LingtongV2Limited_V2.810.0000008.3.R.210713.zip

Model	Version
DH-SD8A240WA-HNF	General_SD8A1XXX-HN_MCU_V2.401.0000000.58.R.191213.zip DH_SD-Fafnir_MultiLang_PN_Stream3-NormalV2_V2.810.0000014.2.R.210709.zip
DH-SD49425XB-HNR	General_SD49XXX-HN_MCU_V2.401.0000000.64.R.200219.zip DH_SD-Prometheus_MultiLang_PN_Stream3_V2.810.0000025.3.R.210705.zip
DH-SD1A404XB-GNR	DH_SD-Prometheus_MultiLang_PN_Stream3_V2.810.0000025.1.R.210407.zip
DH-SD29204UE-GN-W	General_SD29XXX-HN-V_MCU_V2.301.0000000.25.R.191224.zip DH_SD-Eos-Civil_MultiLang_PN_Stream3_V2.812.0000007.0.R.210706.zip
DHI-VTO2202F-P	DH_VTOXXXXD-G_MultiLang_PN_SIP_V4.500.0000000.8.R.210203.zip
DHI-VTO6521F	General_VTO6531H-MCU_V1.000.0000000.1.R.191217.zip DH_VTO65XXX_Eng_PN_V4.300.0000004.0.R.210715.zip
DSS PRO	General_DSS-Pro_Win64_IS_V8.000.0000000.0.R.20200929.exe
DSS EXPRESS	General_DSS-Express_win32_IS_V8.000.0000002.0.R.20210506.exe
SmartPSS PLUS	V1.003.0000000.0
playsdk	General_PlaySDK_Eng_Windows32_IS_V3.044.0000000.1.R.210312.zip
DMSS	General_DMSS-Android-Phone-Plus-Device_MultiLang_Basic_IS_V4.050.0000008.2.R.190924.apk
Player	General_SmartPlayer-Win32_Eng_IS_V4.001.0000001.0.R.200916.zip
ConfigTool	General_ConfigTool_ChnEng_V5.000.0000001.3.R.20200912.zip
NetSDK	General_NetSDK_Eng_Win32_IS_V3.055.0000000.0.R.210524.7z
DiskManager	General_DiskManager-Win32_Eng_V1.000.0000003.2.R.200422.7z
NKB1000	General_NKB1000_Eng_V2.620.0000000.1.R.20200221.bin

Model	Version
NKB5000	General_NKB5000_MultiLang_V3.212.0000001.0.R.200318.BIN

1.8 Pending Issues

None.

1.9 Update Guide

- You can upgrade the NVR by ConfigTool, web and USB drive. For details, see Upgrade Guide.
- Services such as recording and live view will be paused during the upgrade process. The NVR works normally after upgrade and rebooting.
- The upgrade does not affect previous settings of the NVR.
- Do not power off during the upgrade process, or the NVR will not boot up properly.

ZHEJIANG DAHUA VISION TECHNOLOGY CO., LTD.

Address: No.1199, Bin'an Road, Binjiang District, Hangzhou, P.R. China

Postcode: 310053

Tel: +86-571-87688883

Fax: +86-571-87688815

Email: overseas@dahuatech.com

Website: www.dahuasecurity.com