



DH_NVR5XXX-4KS2_MultiLang_
V4.001.0000006.0.R.210208
Release Notes

ZHEJIANG DAHUA VISION TECHNOLOGY CO., LTD.

Legal Information

Copyright

© 2021 ZHEJIANG DAHUA VISION TECHNOLOGY CO., LTD. All rights reserved.

This document cannot be copied, transferred, distributed, or saved in any form without the prior written permission of Zhejiang Dahua Vision Technology Co., LTD (hereinafter referred to as "Dahua").

The products described in this document may contain the software that belongs to Dahua or the third party. Without the prior written approval of the corresponding party, any person cannot (including but not limited to) copy, distribute, amend, abstract, reverse compile, decode, reverse engineer, rent, transfer, sublicense the software.

Trademarks

 and **HDCVI** are the trademarks or registered trademarks of Dahua.

All other company names and trademarks mentioned herein are the properties of their respective owners.

Disclaimer

- These release notes are for reference only, and the actual product shall prevail.
- Succeeding products and release notes are subject to change without notice.
- If there is any uncertainty or controversy, please refer to our final explanation.

Table of Contents

Legal Information	I
Release Notes	1
1.1 Overview	1
1.2 Product Introduction	1
1.3 New Features	1
1.4 Fixed Bugs	2
1.5 Instructions for New Features	3
1.5.1 New languages supported: Traditional Chinese and Japanese	3
1.5.2 PoE Enhancement Mode	3
1.5.3 Remote Initialization	4
1.5.4 Cloud Update Reminder	5
1.5.5 Face Detection and Video Metadata Area Drawing	5
1.5.6 Cloud Operation and Maintenance	6
1.5.7 Alarm Box	7
1.6 Compatibility	7
1.7 Software Environment	8
1.8 Pending Issues	12
1.9 Update Guide	12

Release Notes

1.1 Overview

Item	Description
Product name	Network Video Recorder
Version	V4.001.0000006.0
Software package information	DH_NVR5XXX-4KS2_MultiLang_V4.001.0000006.0.R.210208.zip
Model	DHI-NVR5232-4KS2,DHI-NVR5208-8P-4KS2,DHI-NVR5232-16P-4KS2,DHI-NVR5208-4KS2,DHI-NVR5216-4KS2,DHI-NVR5216-8P-4KS2,DHI-NVR5232-8P-4KS2,DHI-NVR5216-16P-4KS2,DHI-NVR5416-4KS2,DHI-NVR5464-4KS2,DHI-NVR5432-4KS2,DHI-NVR5816-4KS2,DHI-NVR5416-16P-4KS2,DHI-NVR5432-16P-4KS2,DHI-NVR5464-16P-4KS2,DHI-NVR5832-4KS2,DHI-NVR5864-4KS2,DHI-NVR5816-16P-4KS2,DHI-NVR5832-16P-4KS2,DHI-NVR5864-16P-4KS2,DHI-NVR5424-24P-4KS2,DHI-NVR5224-24P-4KS2,DHI-NVR5208-4KS2(V2.0),DHI-NVR5216-4KS2(V2.0),DHI-NVR5232-4KS2(V2.0),DHI-NVR5208-8P-4KS2(V2.0),DHI-NVR5216-8P-4KS2(V2.0),DHI-NVR5232-8P-4KS2(V2.0),DHI-NVR5216-16P-4KS2E,DHI-NVR5232-16P-4KS2E,DHI-NVR5224-24P-4KS2E,DHI-NVR5416-4KS2(V2.0),DHI-NVR5432-4KS2(V2.0),DHI-NVR5464-4KS2(V2.0),DHI-NVR5416-16P-4KS2E,DHI-NVR5432-16P-4KS2E,DHI-NVR5464-16P-4KS2E,DHI-NVR5424-24P-4KS2E,DHI-NVR5816-4KS2(V2.0),DHI-NVR5832-4KS2(V2.0),DHI-NVR5864-4KS2(V2.0),DHI-NVR5816-16P-4KS2E,DHI-NVR5832-16P-4KS2E,DHI-NVR5864-16P-4KS2E,DHI-NVR5032-4KS2,DHI-NVR5064-4KS2,DHI-NVR5216-8P-4KS2E,DHI-NVR5208-8P-4KS2E,DHI-NVR5816-R-4KS2,DHI-NVR5832-R-4KS2,DHI-NVR5864-R-4KS2,DHI-NVR5816-R-16P-4KS2E,DHI-NVR5832-R-16P-4KS2E,DHI-NVR5864-R-16P-4KS2E
Onvif Version	2.6.1
OS requirement	None
Release date	2021-02-08

1.2 Product Introduction

This product is mainly used indoors. Combined with IP cameras, you can use this NVR to complete real-time monitoring and recording. It supports configuring basic parameters by using mouse, and you can build a security monitoring network through web or other professional software developed by Dahua. Product functions include real-time monitoring, record playback, alarm and other auxiliary configuration functions.

1.3 New Features

Feature	Description
---------	-------------

Feature	Description
Security baseline V2.1	1、Blocked dangerous commands in the system. 2、Supports disabling unsafe services, and those services are disabled by default. 3、Important operations log. 4、Network data transfer encryption control. 5、Non-sensitive data information saved in device-end. 6、Secondary authentication for restoring factory defaults. 7、Record logs of important operations. 8、Added prompts of data deletion.
Traditional Chinese and Japanese	The firmware supports traditional Chinese and Japanese.
MP4 format	In video playback interface, video clip support MP4 format.
PoE enhancement mode	The transmission rate of PoE port is changed to 10 Mbps, and the transmission distance is increased.
Display Initialization failure reason	Display error code and reason, and log when camera initialization fails.
Reset Web password	You can reset Web password through reserved mobile phone number of mailbox.
Optimized the compatibility of Private Protocol Authentication Mode.	When compatibility mode causes an abnormal IPC connection, the system prompts users to switch authentication mode.
Cloud upgrade pop-up reminder	Enable Auto-Check for Updates and System Update Notifications. When the device detects that the cloud upgrade version is available, it supports the cloud upgrade pop-up reminder function after login.
Face detection and video metadata area drawing	You can draw area and set target size for face detection and video metadata.
Heat map threshold	You can set threshold when searching for fisheye heat map.
IPC privacy masking	Masks privacy with irregular polygon (such as convex quadrangle) and mosaic.
Cloud operation and maintenance	Export exception data when an exception occurs. Enable LLDP to generate networking diagram.
Alarm box	The alarm box provides additional alarm input and output ports. When the alarm box detects an alarm signal, the system will perform alarm linkage action.
16MP and 24MP camera access	Supports 16MP and 24MP camera access and decoding.

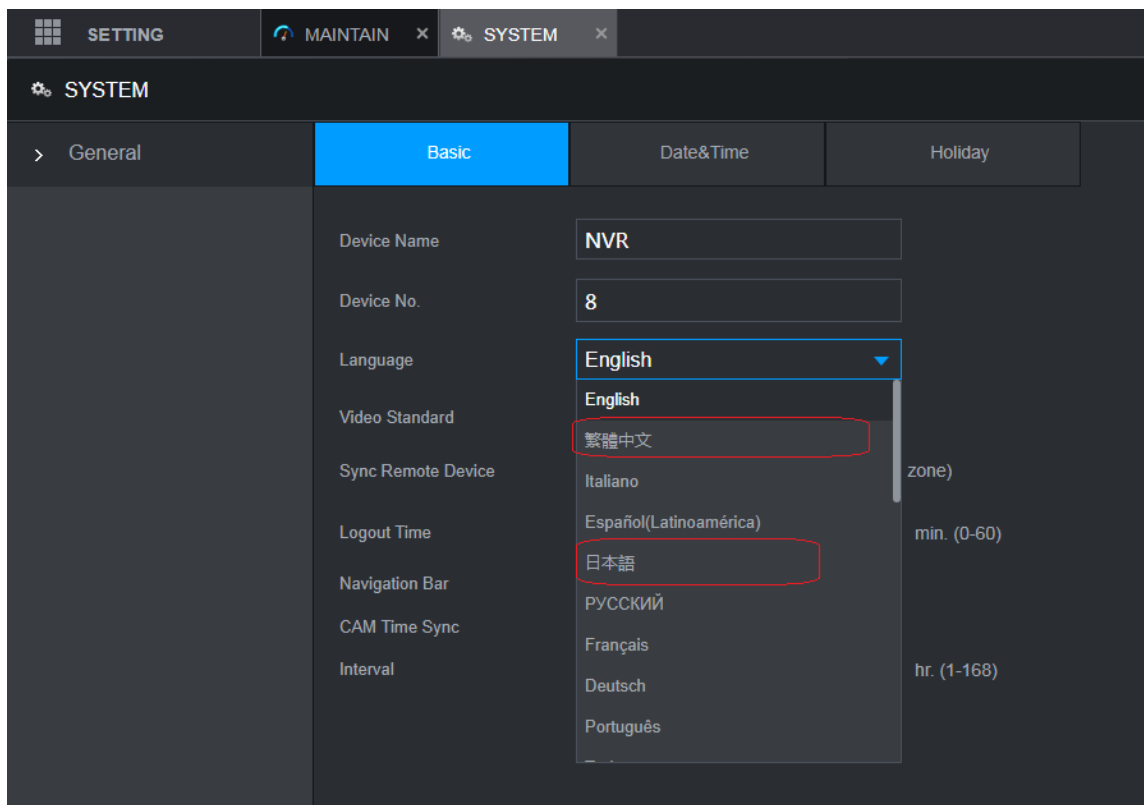
1.4 Fixed Bugs

None.

1.5 Instructions for New Features

1.5.1 New languages supported: Traditional Chinese and Japanese

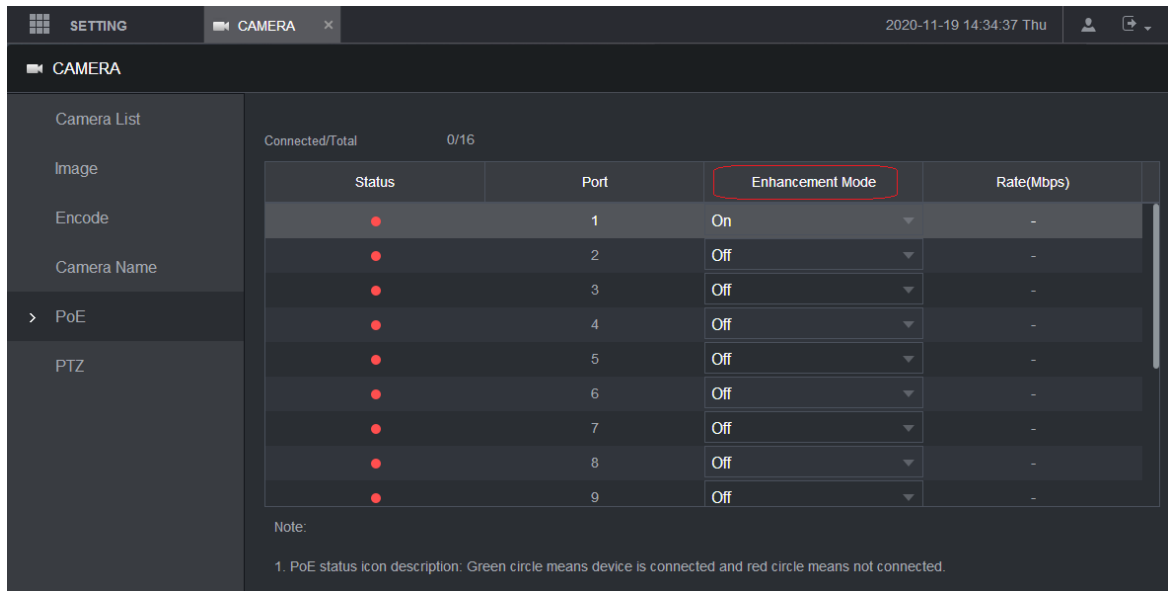
This release supports four new languages: Traditional Chinese and Japanese. You can set those languages in start-up wizard or in **SYSTEM > General > Basic**.



1.5.2 PoE Enhancement Mode

PoE port is limited to 10Mbps mode, which increases the transmission distance.

With Enhancement Mode on, the port reduces the rate to 10Mbps and has an effective transmission distance of up to 200 meters. With Enhancement Mode off, the maximum rate of the port can be up to 100Mbps. The function is disabled by default.

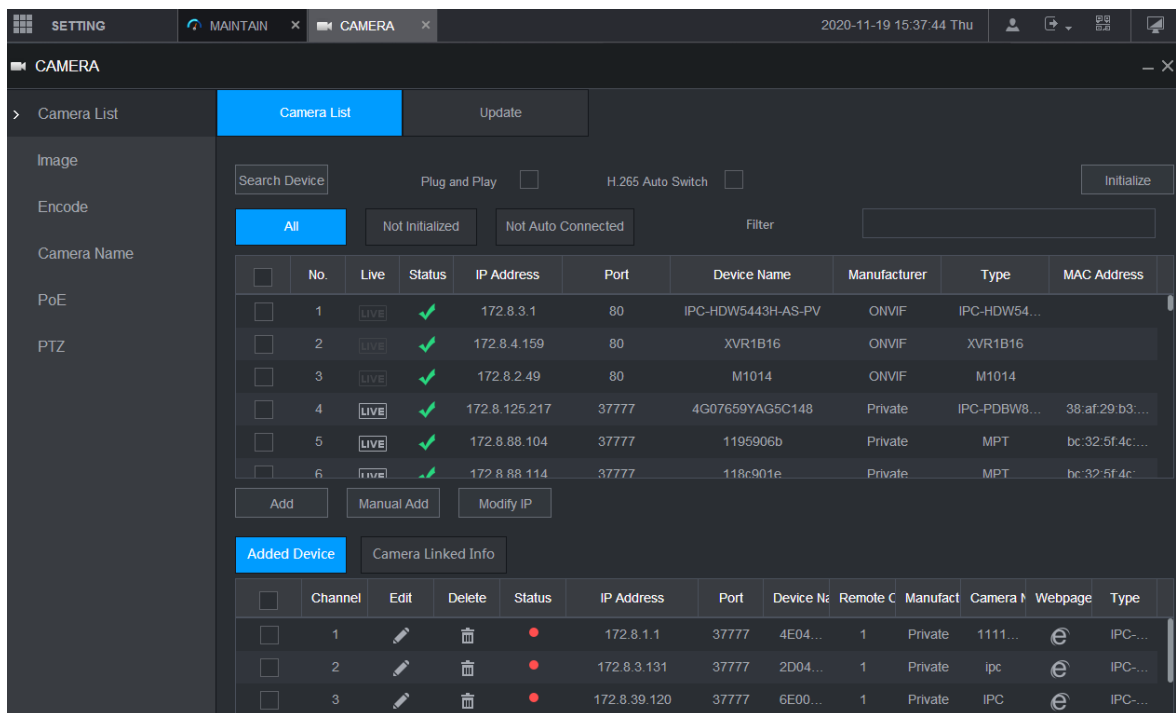


1.5.3 Remote Initialization

In **Camera List** interface, the device automatically searches, and displays the IPC. With **Plug and Play** enabled, the device automatically adds the IPC within the LAN.

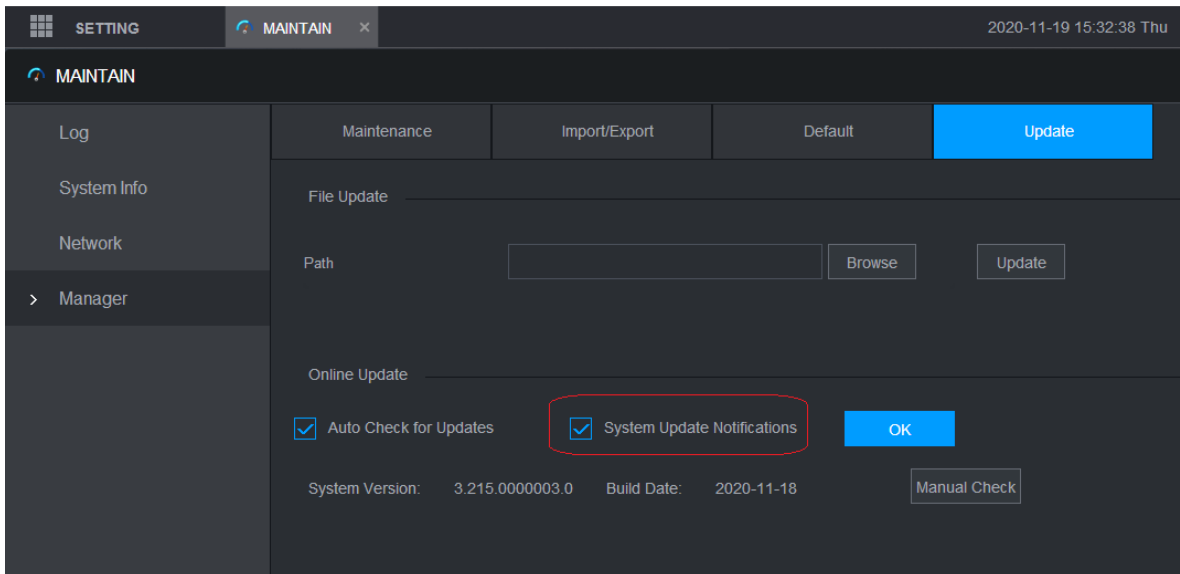
- **All**: Displays all the searched devices not added.
- **Not Initialized**: Displays only the uninitialized cameras.
- **Not Auto Connected**: Indicates that the device has been automatically connected and will not be added automatically. To add it automatically, you need to remove it manually in advance.

Double-click or manually add IPC, the uninitialized IPC can be initialized automatically and added to the device. After the IPC is automatically added, if the login fails, you can re-enter the new password on the preview interface of the IPC channel.



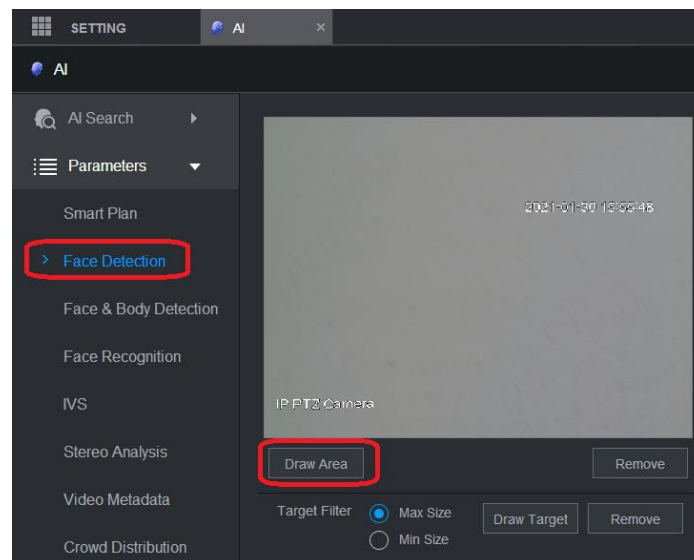
1.5.4 Cloud Update Reminder

Enable **Auto-Check for Updates** and **System Update Notifications**. When the device detects that the cloud upgrade version is available, it supports the cloud upgrade reminder function after login.

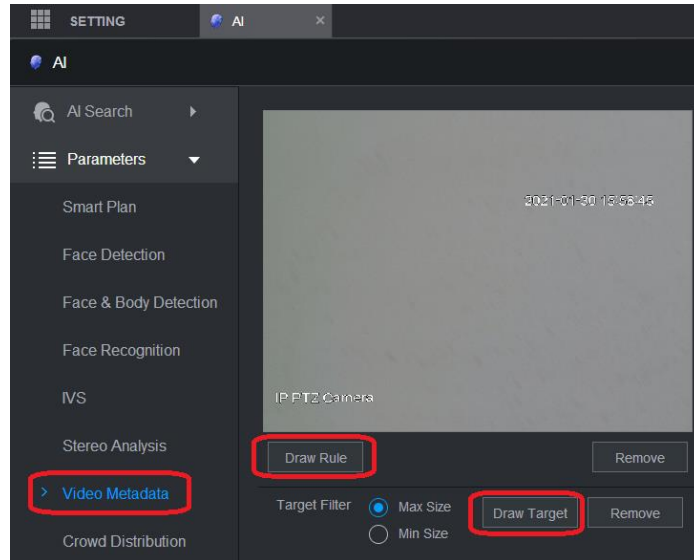


1.5.5 Face Detection and Video Metadata Area Drawing

- You can draw area for face detection to reduce repeated alarms triggered by the person(s) in the image.



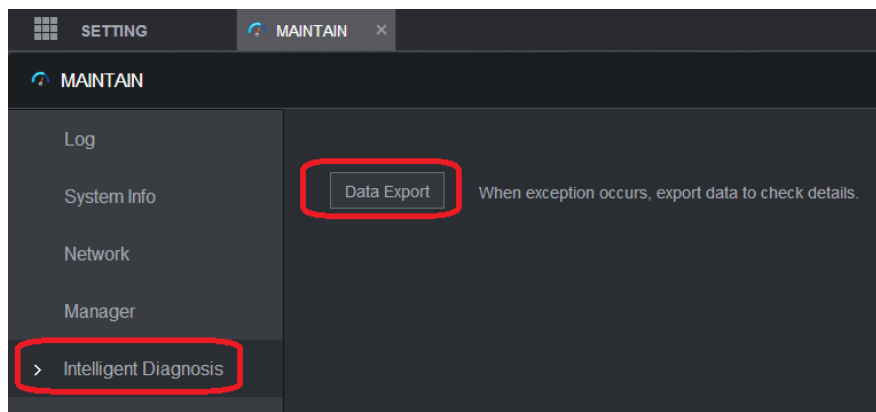
- You can draw area for video metadata and set target size.



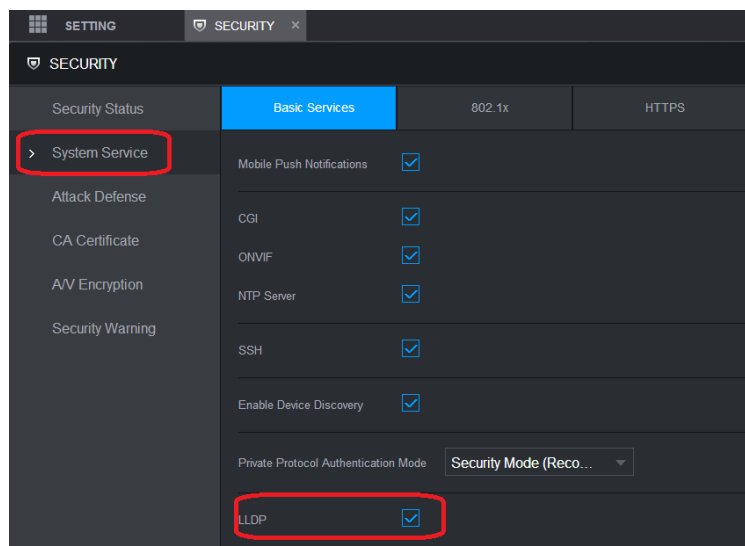
1.5.6 Cloud Operation and Maintenance

Cloud operation and maintenance resolves maintenance issues during construction and operation to improve efficiency and reduce maintenance cost.

- Select **MAINTAIN > Intelligent Diagnosis > Data Export** to export exception data when an exception occurs.

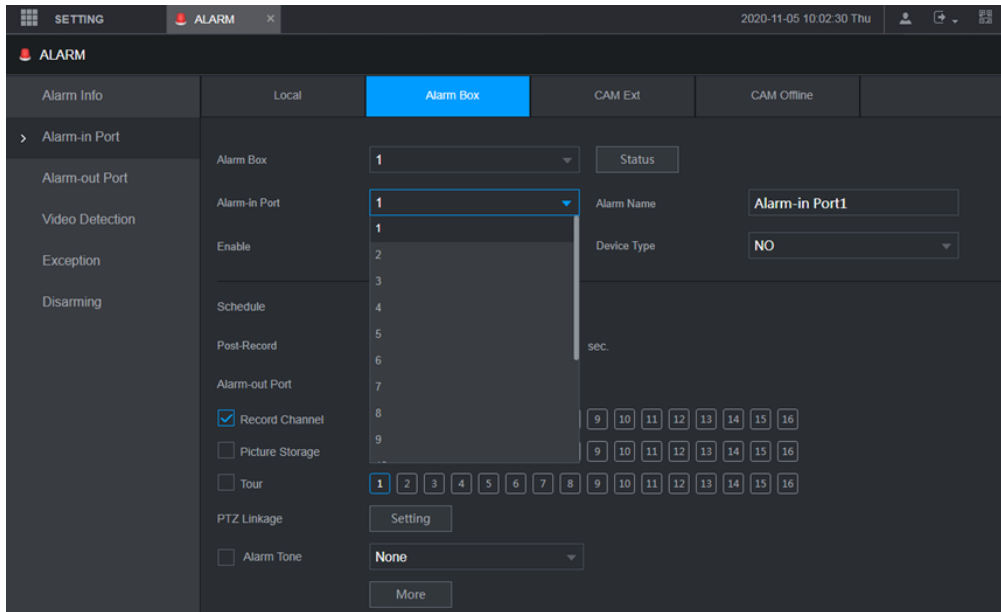


- Select **SECURITY > System Service**, and then enable **LLDP** to generate a networking diagram.



1.5.7 Alarm Box

The external alarm box provides additional alarm input and outputs. When the alarm box detects an alarm signal, the system will perform alarm linkage action.



1.6 Compatibility

This new baseline version is based on the version of Security Baseline 2.1, and it can be rolled back to the versions after Security Baseline 1.4, but cannot be rolled back to a version prior to Security Baseline 1.4.

1.7 Software Environment

Model	Version
DH-IPC-HFW2231SN-S-0280B-S2	2.6.01.05.27722 DH_IPC-HX2XXX-Molec_MultiLang_NP_V2.800.0000000.24.R.201014.zip
DH-IPC-HDW2431TP-AS-0280B-S2	2.6.01.05.18991 DH_IPC-HX2XXX-Molec_MultiLang_PN_V2.800.0000000.14.R.200229.zip
DH-IPC-HFW2531TP-ZAS-27135-S2	2.6.01.05.19834 DH_IPC-HX25(8)XX-Molec_MultiLang_PN_V2.800.0000000.15.R.200313.zip
DH-IPC-HFW2831TP-ZAS-27135-S2	2.6.01.05.27725 DH_IPC-HX25(8)XX-Molec_MultiLang_PN_V2.800.0000000.24.R.201014.zip
DH-IPC-HDW3241TP-ZAS-27135	2.6.01.05.23053 DH_IPC-HX3XXX-Leo_MultiLang_PN_Stream3_V2.800.0000000.14.R.200612.zip
DH-IPC-HFW3441TP-ZS-27135	2.6.01.05.17697 DH_IPC-HX5(4)(3)XXX-Leo_MultiLang_PN_Stream3_V2.800.0000000.8.R.191231.zip
DH-IPC-HDBW5541EP-ZE-0735	2.6.01.05.16076 DH_IPC-HX5XXX-Volt_MultiLang_PN_Stream3_V2.800.0000000.10.R.191118.zip
DH-IPC-HFW5442EP-ZE-2712	2.6.01.05.16076 DH_IPC-HX5XXX-Volt_MultiLang_PN_Stream3_V2.800.0000000.10.R.191118.zip
DH-IPC-HDW5241TMP-AS-0280B	2.6.01.05.16084 DH_IPC-HX4XXX-Volt_MultiLang_PN_Stream3_V2.800.0000000.10.R.191118.zip
DH-IPC-HDW5241HP-AS-PV-0280B	2.6.01.05.16076 DH_IPC-HX5XXX-Volt_MultiLang_PN_Stream3_V2.800.0000000.10.R.191118.zip
DH-IPC-HDW5241TMP-AS-LED-0280B	2.6.01.05.30054 DH_IPC-HX5XXX-Volt_MultiLang_PN_Stream3_V2.820.0000000.0.R.201114.zip
DH-IPC-HFW7442HP-Z-2712F-DC12AC24V	2.6.01.05.21691 DH_IPC-HX8XXX-Nobel_MultiLang_PN_V2.800.0000000.5.R.200525.zip
DH-IPC-HDBW7842HP-Z-2712F-DC12AC24V	2.6.01.05.16040 DH_IPC-HX8XXX-Nobel_MultiLang_PN_V2.800.0000000.4.R.191118.zip
DH-IPC-HDBW7442HP-ZFR-2712F-DC12AC24V	2.6.01.05.16040 DH_IPC-HX8XXX-Nobel_MultiLang_PN_V2.800.0000000.4.R.191118.zip

Model	Version
DH-IPC-HDW8341XP-3D-0280 B	2.6.01.05.28261 DH_IPC-HX8XXX-Dual-Lens-Nobel_MultiLang_PN_V2.800.000000 0.12.R.201022.zip
DH-IPC-PDBW5831P-B360-E4- 2712	2.6.01.05.18030 DH_IPC-HX8(5)XXX-Sag_EngSpnFrn_PN_V2.800.0000000.5.R.2001 07.zip
DH-IPC-PDB4830P-B360-E4-0 360B	2.6.01.05.18030 DH_IPC-HX8(5)XXX-Sag_EngSpnFrn_PN_V2.800.0000000.5.R.2001 07.zip
DH-PSDW5631SP-B360-E4-D2 04-DC12V	2.6.01.05.18030 DH_IPC-HX8(5)XXX-Sag_EngSpnFrn_PN_V2.800.0000000.5.R.2001 07.zip
DH-IPC-EB5531	2.6.01.05.16514 DH_IPC-HX5X3X-Rhea_MultiLang_PN_Stream3_V2.800.0000014.0. R.191203.zip
DH-IPC-EBW8630P	2.6.01.05.17067 DH_IPC-HX8XXX-Nova2_EngSpnFrn_PN_Stream3_V2.622.0000000 .9.R.191210.zip
DH-IPC-EBW81242	2.6.01.05.15136 DH_IPC-EBW8XXXX-Fafnir_MultiLang_PN_Stream3_V2.800.000000 0.0.R.191106.zip
DH-PSDW81642	2.6.01.05.28512 DH_IPC-PSDW824XL-Fafnir_MultiLang_PN_Stream3_V2.800.00000 00.3.R.201103.zip
DH-IPC-HCBW8442P	2.6.01.05.26353 DH_IPC-HX5XXX-Volt_MultiLang_PN_Stream3_V2.800.0000000.20. R.200903.zip
DH-IPC-HDW3549HN-AS-PV- 0360B	2.6.01.05.24481 DH_IPC-HX5XXX-Volt_MultiLang_NP_Stream3_V2.800.0000000.19. R.200709.zip
DH-IPC-PDBW82041P-B360-E 4-27135	2.6.01.05.28719 DH_IPC-PDBW820XX-Fafnir_MultiLang_PN_Stream3_V2.800.00000 00.2.R.201029.zip
DH-IPC-HFW3549T1P-AS-PV-0 280B	2.6.01.05.30443 DH_IPC-HX5(4)(3)XXX-Leo_MultiLang_PN_Stream3_V2.800.00000 00.20.R.201124.zip
DH-IPC-HFW3849T1P-AS-PV-0 280B	2.6.01.05.30676 DH_IPC-HX3XXX-Dalton_MultiLang_PN_Stream3_V2.800.0000000. 9.R.201216.zip
DH-IPC-HFW5442TP-AS-LED-0 280B	2.6.01.05.30054 DH_IPC-HX5XXX-Volt_MultiLang_PN_Stream3_V2.820.0000000.0.R .201114.zip
DH-IPC-HFW3549T1P-AS-PV-0 280B	2.6.01.05.30443 DH_IPC-HX5(4)(3)XXX-Leo_MultiLang_PN_Stream3_V2.800.00000 00.20.R.201124.zip

Model	Version
DH-IPC-HFW3849T1P-AS-PV-0280B	2.6.01.05.30676 DH_IPC-HX3XXX-Dalton_MultiLang_PN_Stream3_V2.800.0000000. 9.R.201216.zip
DH-IPC-HDW3549H-AS-PV	2.6.01.05.30054 DH_IPC-HX5XXX-Volt_MultiLang_PN_Stream3_V2.820.0000000.0.R .201114.zip
ITC237-PU1B- (IR)	2.6.01.08.01701 General_ITC237-PU1B(PW1B)-IR(IRZ)(L)_Eng_PN_Oversea_Europe_ V2.622.0000000.1.R.181114.zip
ITC237-PW1B- (IR) Z	2.6.01.08.01701 General_ITC237-PU1B(PW1B)-IR(IRZ)(L)_Eng_PN_Oversea_Europe_ V2.622.0000000.1.R.181114.zip
ITC215-PW4I- (IR) LZ27135	2.6.01.08.03600 General_ITC215-PW4I-XXX_Eng_PN_Oversea_ITCPUSH_EuropeEN TRANCE_V2.623.0000000.1.R.190820.zip
ITC214-PH2A-F3	2.6.01.08.00059 General_ITCXX4-PH1B(PH1C)(PH2A)-(TF2)_Eng_V2.622.0000000.1. R.180418.zip
ITC214-PH2A-F6	2.6.01.08.00059 General_ITCXX4-PH1B(PH1C)(PH2A)-(TF2)_Eng_V2.622.0000000.1. R.180418.zip
ITC314-PH2A-F2	2.6.01.08.00059 General_ITCXX4-PH1B(PH1C)(PH2A)-(TF2)_Eng_V2.622.0000000.1. R.180418.zip
ITC314-PH2A-F3	2.6.01.08.00059 General_ITCXX4-PH1B(PH1C)(PH2A)-(TF2)_Eng_V2.622.0000000.1. R.180418.zip
ITC314-PH2A-TF2	2.6.01.08.00059 General_ITCXX4-PH1B(PH1C)(PH2A)-(TF2)_Eng_V2.622.0000000.1. R.180418.zip
ITC314-PH2A-TF3	2.6.01.08.00059 General_ITCXX4-PH1B(PH1C)(PH2A)-(TF2)_Eng_V2.622.0000000.1. R.180418.zip
ITC231-RU1A- (IR) L-VF	2.5.02.01.58049 General_ITC231-RF1A(-IR)_Eng_PN_Oversea_India_V2.401.000000 0.1.R.180202.zip
ITC352-RU2D- (IR) L	2.6.01.08.02331General_ITCXX2-RF2D-IR_Eng_PN_Oversea_3G_V2 .622.0000000.7.R.190321.zip
ITC952-RU2D- (IR) L	2.6.01.08.02331General_ITCXX2-RF2D-IR_Eng_PN_Oversea_3G_V2. 622.0000000.7.R.190321.zip
ITC206-RU1A-IRHL	2.1.02.01.16584 General_ITCXX2(206)-RF1A(-IR)_Eng_PN_Oversea_Europe_V2.400. 0000.0.R.20170516.zip

Model	Version
DHI-ITC302-RU1A-IRHLF	2.1.02.01.16584 General_ITCXX2(206)-RF1A(-IR)_Eng_PN_Oversea_Europe_V2.400.0000.0.R.20170516.zip
DHI-ITC602-RU1A-IRHLF	2.1.02.01.16584 General_ITCXX2(206)-RF1A(-IR)_Eng_PN_Oversea_Europe_V2.400.0000.0.R.20170516.zip
DHI-ITC235-TU1A	2.1.02.01.14988 General_ITC235-TF1A_Eng_Oversea_PN_V2.300.0000.1.R.20160921.zip
ITC237-PW1B- (IR) Z	2.6.01.08.01701 General_ITC237-PU1B(PW1B)-IR(IRZ)(L)_Eng_PN_Oversea_Europe_V2.622.0000000.1.R.181114.zip
SDT5X225-2F-WA	2.6.01.05.22242 General_SD-Fafnir_MultiLang_PN_Stream3-LingtongV2Limited_V2.810.0000008.1.R.200514.zip
DH-SD8A240WA-HNF	2.6.01.05.25332 DH_SD-Fafnir_MultiLang_PN_Stream3-NormalV2_V2.810.0000014.0.R.200803.zip
DH-SD5A445XA-HNR	2.6.01.05.20206 DH_SD-Prometheus_MultiLang_PN_Stream3_V2.800.0000009.3.R.200331.zip
DH-SD49425XB-HNR	2.6.01.05.17936 DH_SD-Prometheus_MultiLang_PN_Stream3_V2.800.0000002.4.R.191227.zip
DH-PTZ1C203UE-GN	2.6.01.05.16119 DH_SD-Eos-Civil_MultiLang_PN_Stream3_V2.800.0000000.7.R.191113.zip
DH-SD6CE230U-HNI	2.6.01.05.21870 DH_SD-Eos_MultiLang_PN_Stream3_V2.810.0000000.4.R.200509.zip
DH-SD49225T-HNI	2.6.01.05.15557 DH_SD-Mao-Rhea_MultiLang_PN_Stream3_IVS_V2.800.0000000.4.R.191105.zip
DH-SD29204UE-GN-W	2.6.01.05.21880 DH_SD-Eos-Civil_MultiLang_PN_Stream3_V2.810.0000000.4.R.200509.zip
DH-SD49225T-HNI	2.6.01.05.15557 DH_SD-Mao-Rhea_MultiLang_PN_Stream3_IVS_V2.800.0000000.4.R.191105.zip
DH-TPC-BF1241P-D	2.6.01.05.30936 General_TPC-BF1241-TB_MultiLang_PN_V2.630.0000000.1.R.201225.zip
DHI-VTO7541G	2.6.01.18.06089 DH_VTO75X95X_Eng_PN_SIP_V4.300.0000000.0.R.201010.zip

Model	Version
DHI-VTO2202F-P	2.6.01.18.03843 DH_VTO2202F_MultiLang_PN_SIP_V4.410.0000000.4.R.20200221.zip
DHI-VTO6521F	2.6.01.18.04221 DH_VTO65XXX_Eng_PN_V4.300.0000000.6.R.20200402.zip
DSS PRO	2.7.01.02.01928 General_DSS-Pro_Win64_IS_V8.000.0000000.0.R.20200929.exe
DSSC9100/C9505	2.7.01.01.00894 General_DSSC9100_MultiLang_V3.006.0000000.1.R.200730.tar.gz
SmartPSS	2.7.05.01.01040 General_SMARTPSS-Win64_En_IS_V2.003.0000004.0.R.201021.zip
DMSS	1.80.000
NET SDK	2.8.01.01.01315 General_NetSDK_Eng_Win64_IS_V3.052.0000001.1.R.200514.7z
PlaySDK	2.8.01.01.01485 General_PlaySDK_Eng_Windows32_IS_V3.043.0000001.2.R.200821.zip
Player	2.8.02.01.00493 General_SmartPlayer-Win32_Eng_IS_V4.001.0000001.0.R.200916.zip
ConfigTool	2.8.02.01.00407 General_ConfigTool_ChnEng_V4.011.0000003.7.R.20200325.zip
DiskManager	2.8.02.01.00431 General_DiskManager-Win32_Eng_V1.000.0000003.2.R.200422.7z
NKB5000	2.6.01.09.00662 General_NKB5000_MultiLang_V3.212.0000001.0.R.200318.BIN
NKB1000	2.6.01.09.00655 General_NKB1000_Eng_V3.621.0000000.0.R.200302.zip

1.8 Pending Issues

None.

1.9 Update Guide

1. You can upgrade the NVR by ConfigTool, web and USB flash drive. For details, see Upgrade Guide.
2. Services such as recording and live view will be paused during the upgrade process. The NVR works normally after upgrade and rebooting.
3. The upgrade does not affect previous settings of the NVR.
4. Do not power off during the upgrade process, or the NVR will not boot up properly.

ZHEJIANG DAHUA VISION TECHNOLOGY CO., LTD.

Address: No.1199, Bin'an Road, Binjiang District, Hangzhou, P.R. China

Postcode: 310053

Tel: +86-571-87688883

Fax: +86-571-87688815

Email: overseas@dahuatech.com

Website: www.dahuasecurity.com