



NVR4XXX-4KS2\_V4.000.0000001.5

Release Notes

ZHEJIANG DAHUA VISION TECHNOLOGY CO., LTD.

# Legal Information

## Copyright

© 2019 ZHEJIANG DAHUA VISION TECHNOLOGY CO., LTD. All rights reserved.

This document cannot be copied, transferred, distributed, or saved in any form without the prior written permission of Zhejiang Dahua Vision Technology Co., LTD (hereinafter referred to as "Dahua").

The products described in this document may contain the software that belongs to Dahua or the third party. Without the prior written approval of the corresponding party, any person cannot (including but not limited to) copy, distribute, amend, abstract, reverse compile, decode, reverse engineer, rent, transfer, sublicense the software.

## Trademarks

 and **HDCVI** are the trademarks or registered trademarks of Dahua.

All other company names and trademarks mentioned herein are the properties of their respective owners.

## Disclaimer

- These release notes are for reference only, and the actual product shall prevail.
- Succeeding products and release notes are subject to change without notice.
- If there is any uncertainty or controversy, please refer to our final explanation.

# Table of Contents

<b>Legal Information</b> .....	<b>I</b>
<b>Release Notes</b> .....	<b>1</b>
1.1 Overview .....	1
1.2 New Features .....	1
1.3 Fixed Bugs .....	1
1.4 Instructions for New Features .....	1
1.4.1. SMD Function .....	1
1.4.2. Web Browse .....	5
1.5 Compatibility .....	6
1.6 Software Environment .....	7
1.7 Pending Issues .....	11
1.8 Update Guide .....	12

## 1.1 Overview

Item	Description
Product model	NVR4XXX-4KS2 Series
Version	V4.000.0000001.5,
Software package information	DH_NVR4XXX-4KS2_MulitLang_V4.000.0000001.5.R.20191218.zip
Onvif Version	2.4.1
OS requirement	None
Release date	12/20/2019

## 1.2 New Features

Feature	Description
<b>SMD function</b>	<ul style="list-style-type: none"><li>① Support configuring SMD functions on IP cameras, such as enable switch, sensitivity and effective target.</li><li>② Support SMD alarm event, reusing MD alarm configuration.</li><li>③ Support filtered query and playback for human and vehicle.</li><li>④ Support displaying SMD rectangle on human and vehicle in live view.</li><li>⑤ Support displaying SMD rectangle on human and vehicle in playback.</li><li>⑥ Search and export SMD events.</li><li>⑦ Modified SMD playback start point to start from 10s ahead of the recorded video.</li></ul>
<b>Web browse optimization</b>	<ul style="list-style-type: none"><li>① On the basis of single NIC and PoE channel jump, dual NIC network segment crossing jump is added for the web.</li><li>② For safety concerns, an enable switch is added for virtual machine. The switch is enabled by default, and the jump to the web will fail if it is disabled.</li></ul>

## 1.3 Fixed Bugs

The fixed bugs are included in the chapter 1.2 New Features.

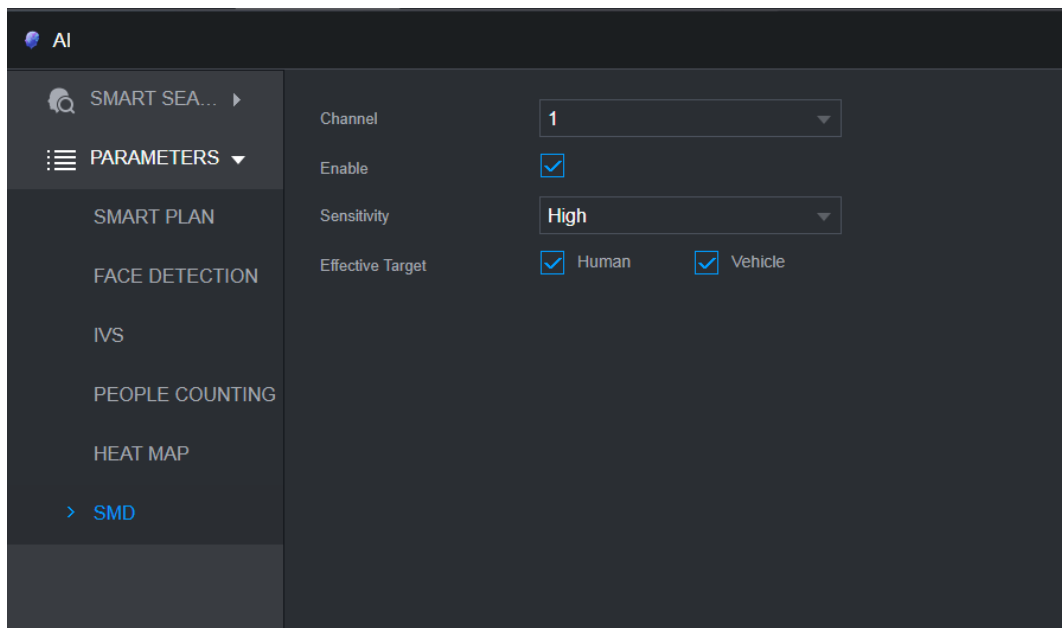
## 1.4 Instructions for New Features

### 1.4.1. SMD Function

MD (motion detection) has a problem of false alarms, the change of brightness, shaking of leaves or the device, or a rain will trigger a motion detection alarm. Based on the MD function, SMD (Small Motion Detection) is

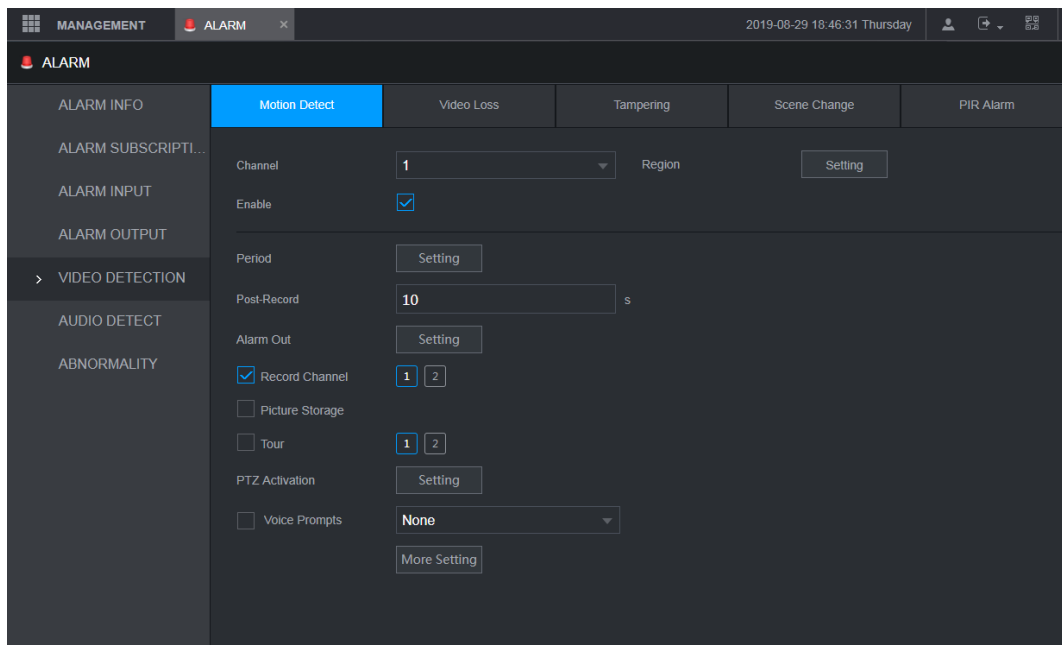
aimed to improve the practical value of motion detection by intelligently analyzing and distinguishing human and vehicle in videos. Alarm event will be triggered only when human or vehicle is detected.

- i. **SMD Configuration:** Includes enable switch, sensitivity and effective target.



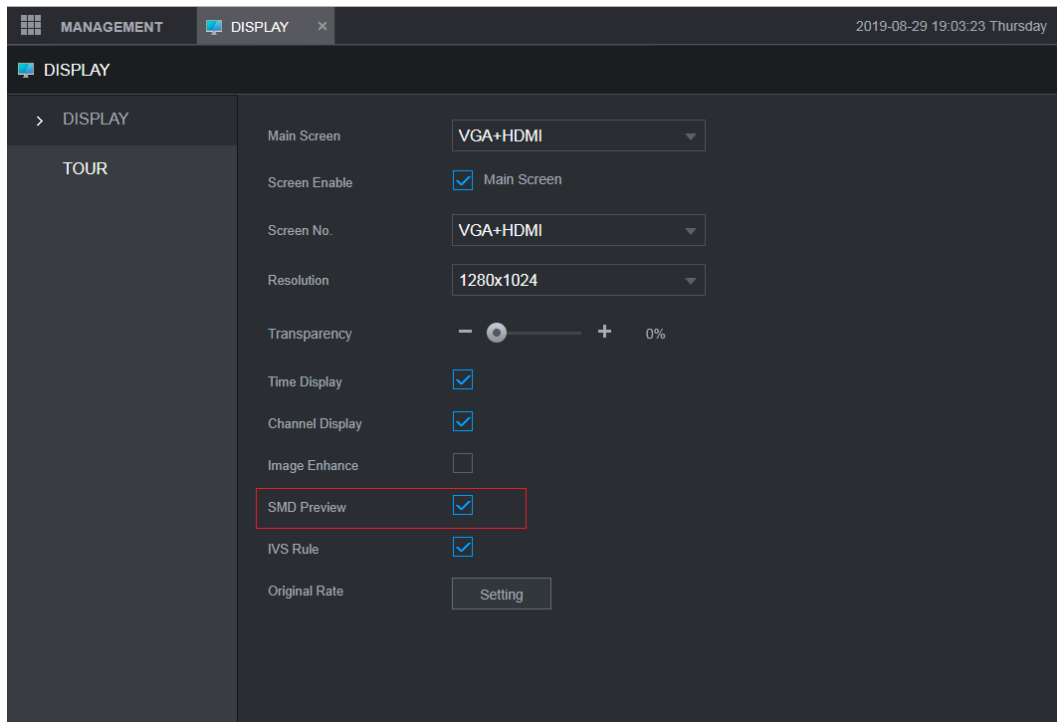
- ii. **SMD alarm configuration**

- SMD reuses alarm configuration of MD.
- When SMD is enabled, MD will be enabled synchronously and its alarm configuration will be applied to SMD.
- When MD is disabled, SMD will be disabled synchronously.
- When SMD is disabled, MD continues working.

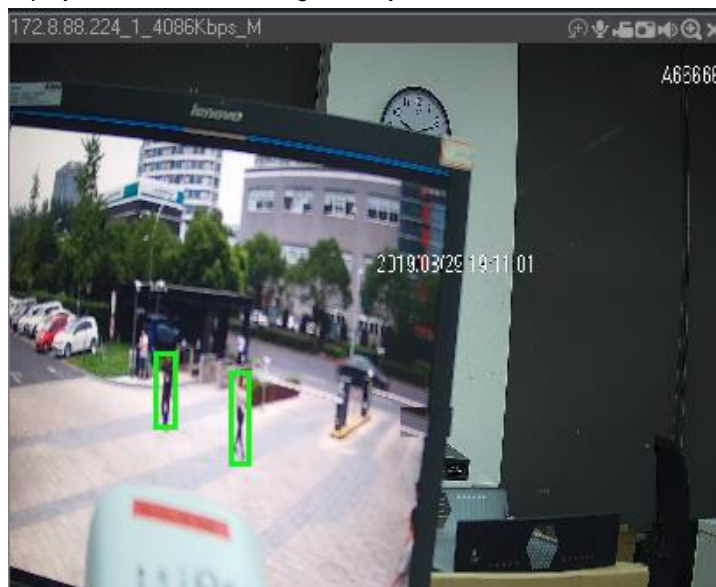


- iii. **SMD rectangle displayed on human and vehicle**

You can enable **SMD Preview** on **Display** interface to display SDM rectangle on human and vehicle.

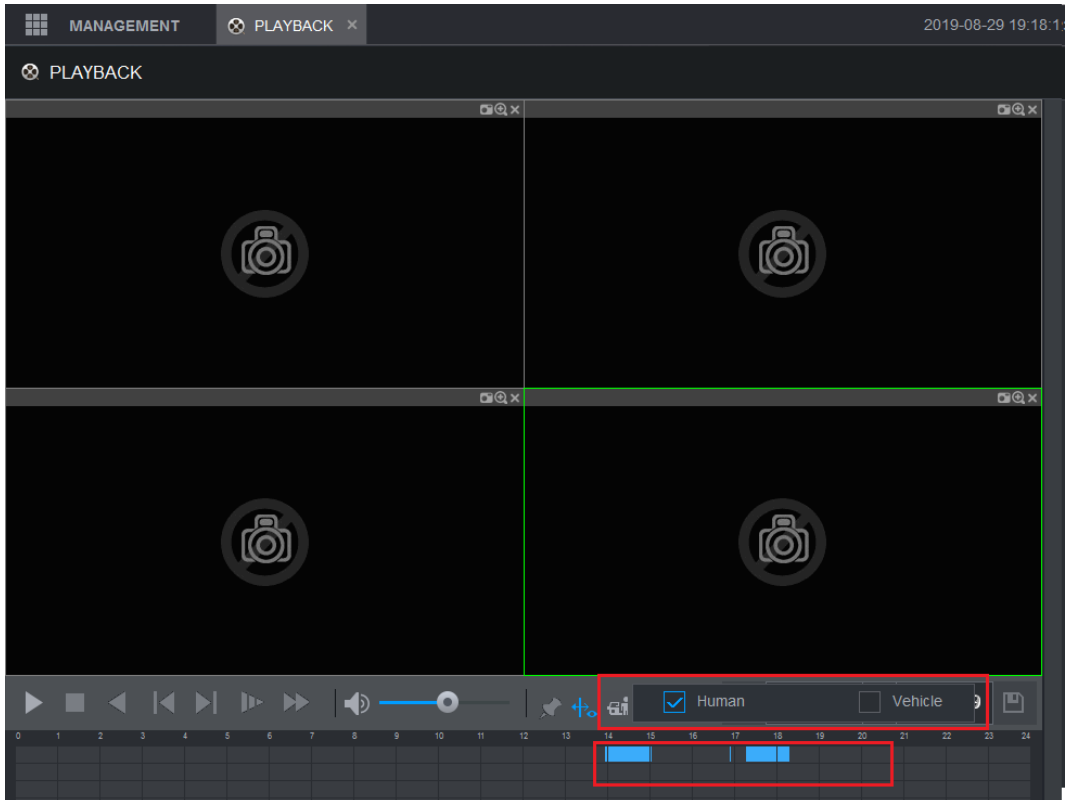


SMD rectangles are displayed as follows, flashing in every 2 seconds.



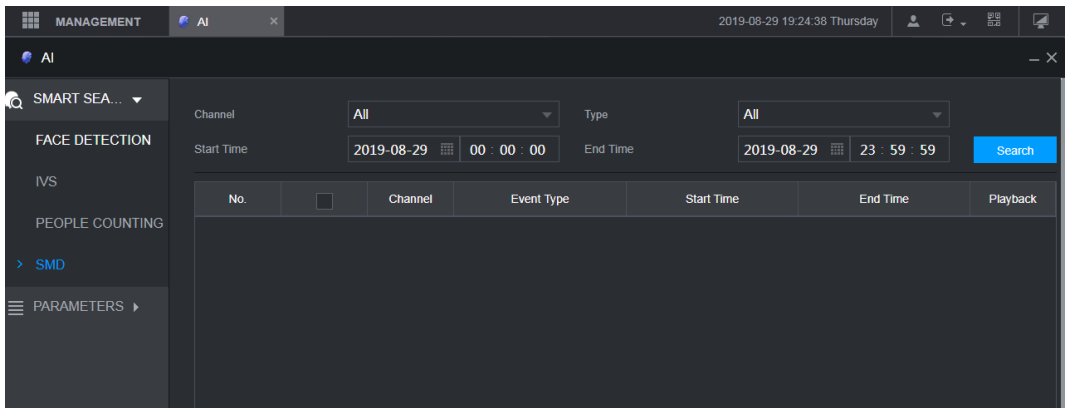
iv. **Filtered query and playback for human and vehicle**

- Query files are displayed in the color of blue.
- Enable switch reuses the switch of smart rules.
- Video playback by filtered result.



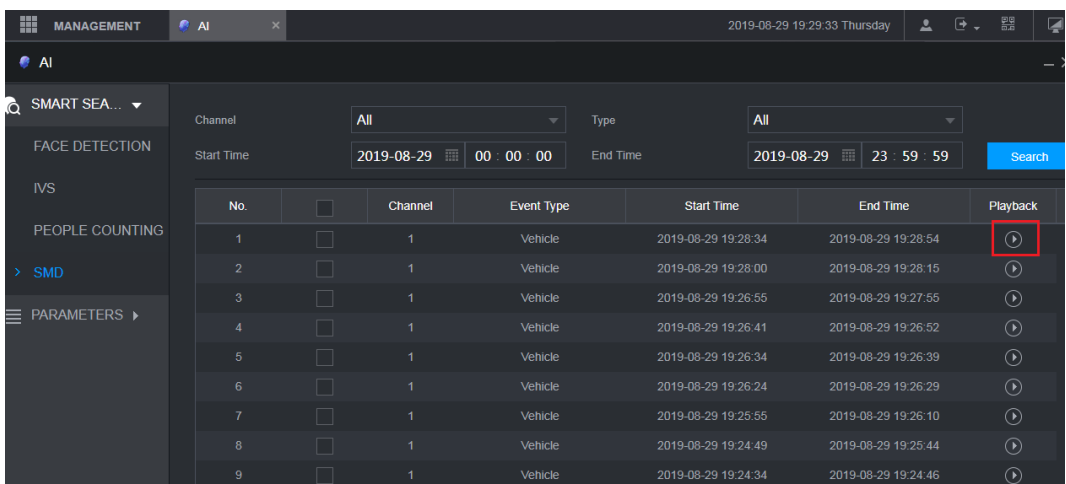
**v. SMD search on AI interface**


You can search for SDM event on the **AI** interface by time, channel, human and vehicle.

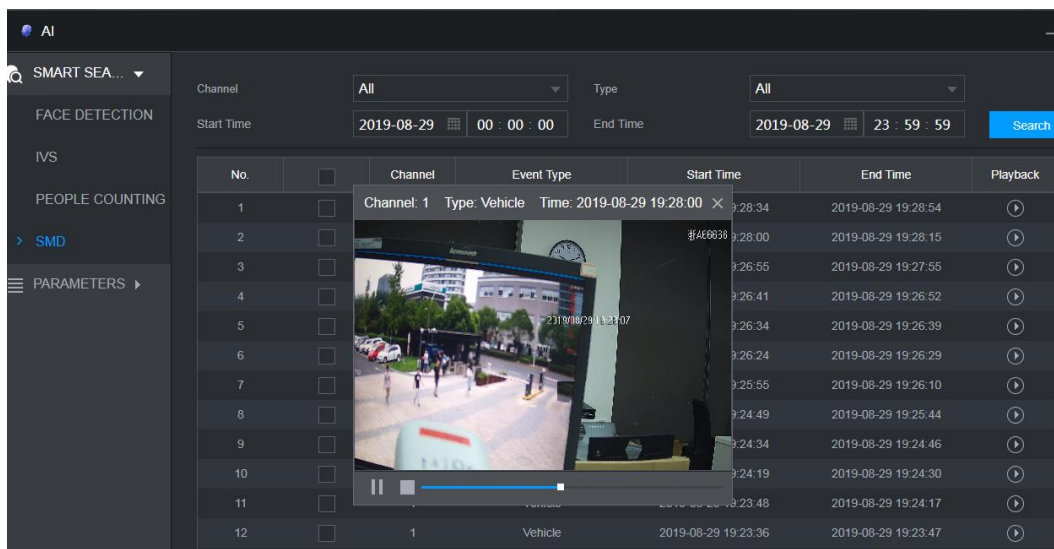


**vi. SMD playback on AI interface**

You can directly play videos in **Playback** column from start time to end time by filtered results.

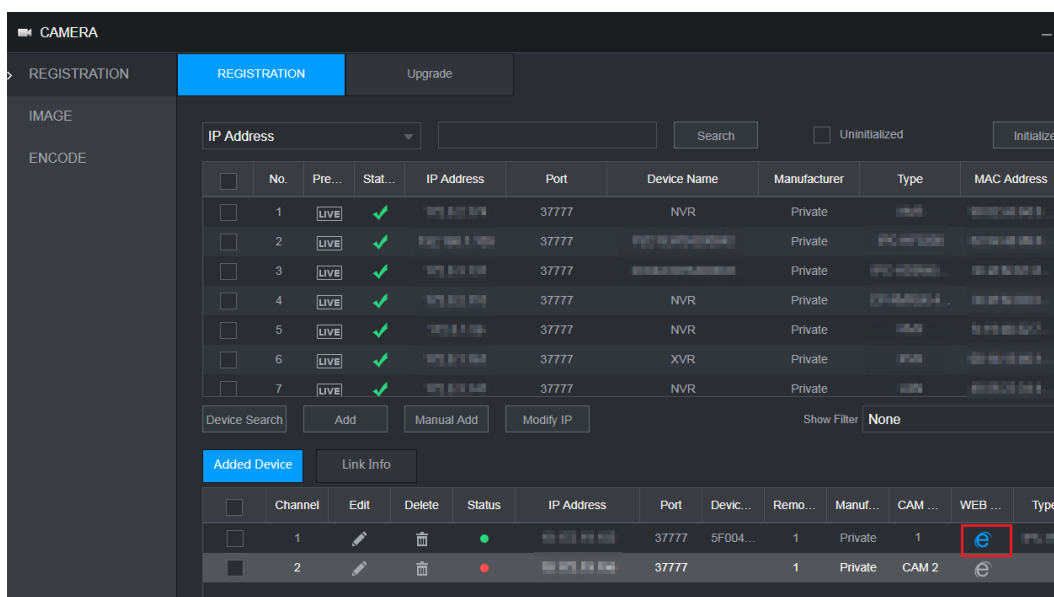



Click , and then a player will be prompted to play video.



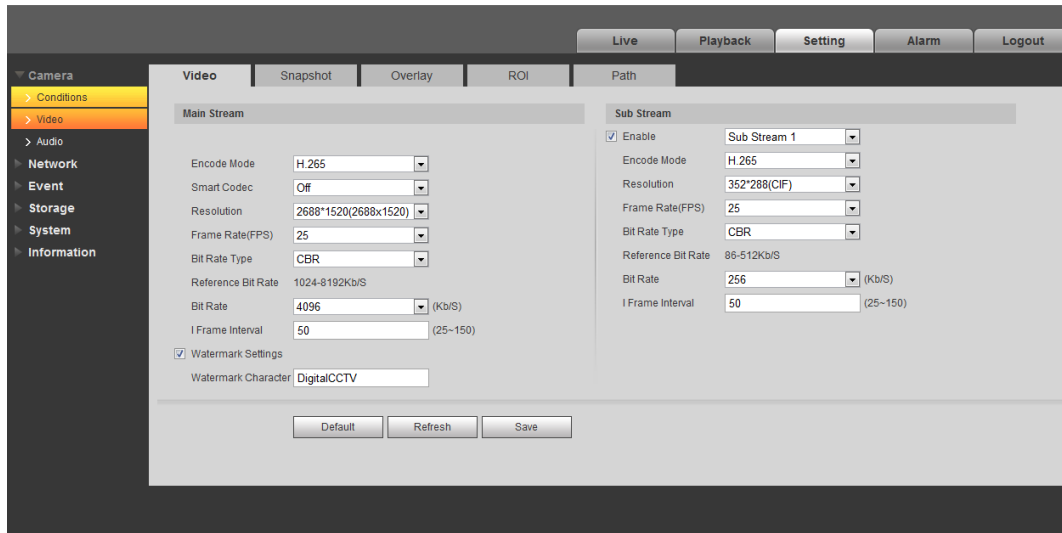
## 1.4.2. Web Browse

You can visit the web of a remote device to finish configuration through the WEB Browse function of NVR, instead of visiting the remote device separately.



Click , and then you can visit the web of a remote device to complete normal operations.





## 1.5 Compatibility

After updating to latest new baseline version 4.0, user cannot update back to versions lower than version 4.0

## 1.6 Software Environment

Model	Version
DH-IPC-HFW81230E-Z-IRA,	2.6.01.05.06362 DH_IPC-HX8XXX-Nova_Chn_PN_Stream3_V2.640.0000004.0.R.190118.zip
DH-IPC-HF8331FP-S2,	2.6.01.05.06365 DH_IPC-HX8XXX-Nova_MultiLang_PN_Stream3_V2.640.0000004.0.R.190118.zip
DH-IPC-HF81239F,	2.6.01.05.06889 DH_IPC-HX8XXX-Wei-Nova2_Chn_PN_Stream3_V2.622.0000000.6.R.190130.zip
DH-IPC-HFW5233F-ZSA-27135,	2.6.01.05.05914 DH_IPC-HX4XXX-Eos_Chn_PN_Stream3_V2.680.0000000.41.R.181212.zip
DH-IPC-HFW8239K-Z-I4-3512,	2.6.01.05.05912 DH_IPC-HX8XXX-Eos_Chn_PN_Stream3_V2.680.0000000.41.R.181212.zip
DH-IPC-HFW8438K-Z-I4-27135,	2.6.01.05.03379 DH_IPC-HX5X3X-Rhea_Chn_PN_Stream3_V2.622.0000000.30.R.180905.zip
DH-IPC-HFW4443M-AS-PV-I2-0360B,	2.6.01.05.08342 DH_IPC-HX5XXX-Volt_Chn_PN_Stream3_V2.680.0000000.5.R.190404.zip
DH-IPC-HFW4833F-ZAS-3512,	2.6.01.05.08213 DH_IPC-HX5(4)XXX-Sag_Chn_PN_Stream3_V2.800.0000000.2.R.190404.zip
DH-IPC-HFW4433K-AS-I4-0360B,	2.6.01.05.05914 DH_IPC-HX4XXX-Eos_Chn_PN_Stream3_V2.680.0000000.41.R.181212.zip
DH-IPC-HDBW5233E-Z-X1-27135-DC12AC24V,	2.6.01.05.07673 DH_IPC-HX5X3X-Rhea_Chn_PN_Stream3_V2.800.0000005.0.R.190325.zip
DH-IPC-HFW4631K-AS-I4-0360B,	2.6.01.05.07673 DH_IPC-HX5X3X-Rhea_Chn_PN_Stream3_V2.800.0000005.0.R.190325.zip
DH-IPC-HFW5433E-Z-IRA-X1-0560-DC12AC24V,	2.6.01.05.07673 DH_IPC-HX5X3X-Rhea_Chn_PN_Stream3_V2.800.0000005.0.R.190325.zip
DH-IPC-HFW5631E-Z-0735-AC24V,	2.6.01.05.07673 DH_IPC-HX5X3X-Rhea_Chn_PN_Stream3_V2.800.0000005.0.R.190325.zip
DH-IPC-HDBW5431EP-ZE-27135,	2.6.01.05.07655 DH_IPC-HX5X3X-Rhea_MultiLang_PN_Stream3_V2.800.0000005.0.R.190325.zip

Model	Version
DH-IPC-HDBW5831EP-ZE-0735,	2.6.01.05.07655 DH_IPC-HX5X3X-Rhea_MultiLang_PN_Stream3_V2.800.0000005.0.R.190325.zip
DH-IPC-HUM8231P-E2,	2.6.01.05.02685 DH_IPC-HX5X3X-Multi-Rhea_Eng_P_V2.622.0000000.31.R.180813.zip
DH-IPC-HUM7233-E1,	2.6.01.05.07673 DH_IPC-HX5X3X-Rhea_Chn_PN_Stream3_V2.800.0000005.0.R.190325.zip
DH-IPC-HFW8249E-ZFR-IRA-LED-0832,	2.6.01.05.07146 DH_IPC-HX8X4X-Warpway_Chn_PN_Stream3_V2.680.0000000.1.R.190223.zip
DH-IPC-HF8841F-FD,	2.6.01.05.07146 DH_IPC-HX8X4X-Warpway_Chn_PN_Stream3_V2.680.0000000.1.R.190223.zip
DH-IPC-HFW8841E-ZFR-IRA-LED-67134,	2.6.01.05.07146 DH_IPC-HX8X4X-Warpway_Chn_PN_Stream3_V2.680.0000000.1.R.190223.zip
DH-IPC-HFW8249E-ZFDI-IRA-LED-0832,	2.6.01.05.07160 DH_IPC-HX8X4X-Warpway2_Chn_PN_Stream3_V2.680.0000000.1.R.190223.zip
DH-IPC-HDW7341X-E2-0280B,	2.6.01.05.05281 DH_IPC-HX8X4X-Kronos_Chn_PN_Stream3_V2.622.0000000.5.R.181215.zip
DH-IPC-HFW7243K-ZPC-I4-0735,	DH_IPC-HX8X4X-Warpway2_Chn_PN_Stream3_V2.622.0000000.9.R.181119.zip
DH-IPC-HD4140X-E2-0210B,	2.6.01.05.08217 DH_IPC-HX7XXX-Sag_Chn_PN_Stream3_V2.800.0000000.2.R.190404.zip
DH-IPC-HDW8341XP-3D-0280B,	2.6.01.05.05284 DH_IPC-HX8X4X-Kronos_Eng_P_Stream3_V2.622.0000000.5.R.181215.zip
DH-IPC-HDW7341X-B-E2-0280B,	2.6.01.05.02992 DH_IPC-HX8X4X-Kronos_Chn_PN_Stream3_V2.622.0000000.4.R.180816.zip
DH-IPC-HFW8449K-ZRL-LED-3512,	DH_IPC-HX8XXX-Volt_Chn_PN_Stream3_V2.680.0000000.5.R.190404.zip
DH-IPC-HFW5541EP-ZE-27135,	DH_IPC-HX5XXX-Volt_MultiLang_PN_Stream3_V2.680.0000000.5.R.190404.zip
DH-IPC-HFW5241EP-ZE-27135,	DH_IPC-HX5XXX-Volt_MultiLang_PN_Stream3_V2.680.0000000.5.R.190404.zip
DH-IPC-HFW5541EP-ZE-27135,	DH_IPC-HX5XXX-Volt_MultiLang_PN_Stream3_V2.680.0000000.5.R.190404.zip

Model	Version
DH-IPC-HF8242FP-FR,	2.6.01.05.07153 DH_IPC-HX8X4X-Warpway_EngSpnFrn_PN_Stream3_V2.680.000000 0.1.R.190223.zip
DH-IPC-HF8242FP-FD,	2.6.01.05.07153 DH_IPC-HX8X4X-Warpway_EngSpnFrn_PN_Stream3_V2.680.000000 0.1.R.190223.zip
DH-IPC-HF8241FP,	2.6.01.05.07170 DH_IPC-HX8X4X-Warpway2_EngSpnFrn_PN_Stream3_V2.680.00000 00.1.R.190223.zip
DH-IPC-PDBW5831P-B360-E4-2 712,	2.6.01.05.06704 DH_IPC-HX8(5)XXX-Sag_EngSpnFrn_PN_V2.622.0000000.21.R.190 125.zip
DH-IPC-PDB4830P-B360-E4-03 60B,	2.6.01.05.07064 DH_IPC-HX8(5)XXX-Sag_EngSpnFrn_PN_V2.622.0000000.22.R.190 225.zip
DH-PSDW5631SP-B360-E4-D20 4-DC12V,	2.6.01.05.06035 DH_IPC-HX8(5)XXX-Sag_EngSpnFrn_PN_V2.622.0000000.20.R.190 110.zip
DH-IPC-PFW8809-H-A180-E4-A C24V,	DH_IPC-PFW8XXX-Nova_Chn_PN_Stream3_V2.622.0000000.3.R.18 1201.zip
DH-PSDW81649-H-A360-E9,	DH_IPC-PSD8XXX-Fafnir_Chn_PN_Stream3_V2.622.0000000.1.R.18 1205.zip
DH-PSD81602P-H-A360-E9,	DH_IPC-PSD8XXX-Nova_Eng_P_Stream3_V2.460.0000.4.R.2017092 7.zip
DH-IPC-PFW8802P-H-A180-E4- AC24V,	DH_IPC-PFW8XXX-Nova_Eng_P_Stream3_V2.622.0000000.3.R.181 201.zip
DH-IPC-HDBW4231FP-E2-M-03 60B,	2.6.01.05.02685 DH_IPC-HX5X3X-Multi-Rhea_Eng_P_V2.622.0000000.31.R.180813.zi p
DH-IPC-EW5431-ASW,	2.1.02.01.17602 DH_IPC-HX5X3X-Rhea_Chn_PN_Stream3_V2.460.0000000.16.R.201 70919.zip
DH-IPC-EB5531,	2.6.01.05.07655 DH_IPC-HX5X3X-Rhea_MultiLang_PN_Stream3_V2.800.0000005.0.R .190325.zip
DH-IPC-EBW81230,	2.6.01.05.06903 DH_IPC-HX8XXX-Nova2_Chn_PN_Stream3_V2.622.0000000.6.R.190 130.zip
DH-IPC-EBW8630P,	2.6.01.05.06908 DH_IPC-HX8XXX-Nova2_EngSpnFrn_PN_Stream3_V2.622.0000000. 6.R.190130.zip
DH-IPC-EBW81230P,	2.6.01.05.06908 DH_IPC-HX8XXX-Nova2_EngSpnFrn_PN_Stream3_V2.622.0000000. 6.R.190130.zip

Model	Version
ITC237-PU1B-IR,	2.6.01.08.01701 General_ITC237-PU1B(PW1B)-IR(IRZ)(L)_Eng_PN_Oversea_Europe_V2.622.0000000.1.R.181114.zip
ITC237-PW1B-IRZ,	2.6.01.08.01701 General_ITC237-PU1B(PW1B)-IR(IRZ)(L)_Eng_PN_Oversea_Europe_V2.622.0000000.1.R.181114.zip
ITC215-PW4I,	General_ITC215-PW4I-XXX_Eng_PN_Oversea_ITCPUSH_EuropeEN TRANCE_V2.623.0000000.0.R.180930.zip
ITC952-RF2D,	General_ITCXX2-RF2D-IR_Eng_PN_Oversea_3G_V2.622.0000000.7.R.190321.zip
ITC352-RF2D,	General_ITCXX2-RF2D-IR_Eng_PN_Oversea_3G_V2.622.0000000.7.R.190321.zip
ITC302-RF2D,	General_ITCXX2-RF1D(RF2D)_Chn_P_V2.722.0000000.0.R.190409.zip
ITC902-RF2D,	General_ITCXX2-RF1D(RF2D)_Chn_P_V2.722.0000000.0.R.190409.zip
ITC235-RF1D,	General_ITC235-RF1D_Chn_P_V2.622.0000000.0.R.180424.zip
ITC235-RF2E,	General_ITC235-RF1E(RF2E)_Chn_P_Stream3_V2.620.0000000.0.R.180705.zip
ITC835-RF1D,	General_ITC835-RF1D_Chn_PN_V2.622.0000000.0.R.180818.zip
ITC302-SF2D-QD,	General_ITC302-SF2D-QD_Chn_P_V2.622.0000000.0.R.180611.zip
ITC902-SF2D-QA,	General_ITC902-SF2D-QA_Chn_P_V2.622.0000000.0.R.180425.zip
ITC902-SF2D-QB,	General_ITC902-SF2D-QB_Chn_P_V2.401.0000000.1.R.180509.zip
ITC215-PW5H-F3,	General_ITC215-PW5H-F(R)_Chn_PN_GAYSITCPUSH_Mainland_V2.622.0000000.2.R.180929.zip
ITC215-PW5H,	General_ITC215-PW5H-F(R)_Chn_PN_GAYSITCPUSH_Mainland_V2.622.0000000.2.R.180929.zip
ITC314-PH2A,	General_ITCXX4-PH1B(PH1C)(PH2A)-(TF2)_Chn_PN_GAYS_Mainland_V2.622.0000000.1.R.180418.zip
DH-TPC-BF8x21	General_TPC-BF8X21_V2.200.0000000.5.R.190327.zip
DH-SD-8A1840WA-HNF,	2.6.01.05.07347 DH_SD-Fafnir_Chn_PN_Stream3_V2.623.0000000.13.R.190227.zip
SD6CE230U-HNI,	2.6.01.05.06726 DH_SD-Eos_MultiLang_PN_Stream3_V2.623.0000000.17.R.190119.zip
DH-SD-1A1203UE-GN-PD,	2.1.01.04.10167 DH_SD-Eos-Civil_Chn_PN_Stream3_V2.622.0000000.13.R.180328.zip
DH-SD29204UE-GN-W,	2.6.01.05.06270 DH_SD-Eos-Civil_MultiLang_PN_Stream3_V2.623.0000000.17.R.190119.zip

Model	Version
DH-SD6C82F-HNP(ZJ)-A	2.6.01.05.08251 DH_SD-Eos_Chn_PN_Stream3-ZhouJie_V2.623.0000000.17.R.190119.zip
DH-SD-6C3440XA-HNR,	2.6.01.05.06793 DH_SD-Prometheus_Chn_PN_Stream3_V2.623.0000000.5.R.190220.zip
DH-SDT-5A404WA-C4F,	2.6.01.05.07333 DH_SD-Fafnir_Chn_PN_Stream3-Lingtong_V2.623.0000000.13.R.190227.zip
DH-SDT-8A1840WA-T8Z4,	2.6.01.05.08301 DH_SD-Fafnir_Chn_PN_Stream3-Tianshu_V2.800.0000000.1.R.190402.zip
DH-VTO9341D-S,	2.6.01.18.01051 General_VTO9341D-S_Chn_P_SIP_V1.000.0000000.5.R.20181010.zip
DH-VTT201,	2.6.01.18.00886 General_VTT201_Chn_P_16M_SIP_V1.001.0000000.2.R.20180817.zip
DHI-DSS7016D-S2,	General_OverseasDSS7016S2_Eng_Basic_V1.000.0000000.0.R.20181130.tar.gz,
DSS7016D-S2-I,	During development.
DSSC9100/C9505	During development.
IBSP-PRO	2.7.01.07.00243 General_iBSP_Chn_Oracle_IS_V4.000.0000001.0.R.20190122.tar.gz
H8900,	2.7.01.08.00410 General_DSS-H8900_Chn_Basic_V3.001.0000001.7.R.20190131.tar.gz
NKB1000,	General_NETKB1000_Chn_V2.610.0000.4.R.20161024.zip,
NKB5000,	DH_NKB5000_Chn_V3.210.0003.0.R.170930.BIN,
NVD0405DH-4K,	General_NVD0405DH-4K_Chn_P_V3.200.0002.00.R.20170713.zip
NVD0905DH-4I-4K,	General_NVD0905DH-4K_Chn_V3.200.0003.0.R.170509.BIN
SmartPSS	DH_SmartPSS_ChnEng_Win32_IS_V2.02.0.R.171124.zip,
DMSS	2.1.02.01.10709 General_DMSS-IOS-Phone-Lite-Device_InterneI_Basic_IS_V3.24.000.R.140928.ipa
Player	General_Player_Chn_WIN32_V3.44.0.R.170421.zip,
ConfigTool	General_ConfigTool_ChnEng_V4.011.0000001.4.R.20190305.zip,
NetSDK	General_NetSDK_Chn_Win64_IS_V3.050.0000005.3.R.190225.7z,
DiskManager	

## 1.7 Pending Issues

None.

## 1.8 Update Guide

None.

**ZHEJIANG DAHUA VISION TECHNOLOGY CO., LTD.**

Address: No.1199, Bin'an Road, Binjiang District, Hangzhou, P.R. China

Postcode: 310053

Tel: +86-571-87688883

Fax: +86-571-87688815

Email: [overseas@dahuatech.com](mailto:overseas@dahuatech.com)

Website: [www.dahuasecurity.com](http://www.dahuasecurity.com)