



NVR2XXX-4KS2_V4.000.0000002.0

Release Notes

ZHEJIANG DAHUA VISION TECHNOLOGY CO., LTD.

Legal Information

Copyright

© 2019 ZHEJIANG DAHUA VISION TECHNOLOGY CO., LTD. All rights reserved.

This document cannot be copied, transferred, distributed, or saved in any form without the prior written permission of Zhejiang Dahua Vision Technology Co., LTD (hereinafter referred to as "Dahua").

The products described in this document may contain the software that belongs to Dahua or the third party. Without the prior written approval of the corresponding party, any person cannot (including but not limited to) copy, distribute, amend, abstract, reverse compile, decode, reverse engineer, rent, transfer, sublicense the software.

Trademarks

 and **HDCVI** are the trademarks or registered trademarks of Dahua.

All other company names and trademarks mentioned herein are the properties of their respective owners.

Disclaimer

- These release notes are for reference only, and the actual product shall prevail.
- Succeeding products and release notes are subject to change without notice.
- If there is any uncertainty or controversy, please refer to our final explanation.

Table of Contents

Legal Information	I
Release Notes	1
1.1 Overview	1
1.2 New Features	1
1.3 Fixed Bugs	1
1.4 Instructions for New Features	1
1.4.1. SMD Function	1
1.4.2. Web Browse	5
1.5 Compatibility	6
1.6 Software Environment	7
1.7 Pending Issues	8
1.8 Update Guide	8

1.1 Overview

Item	Description
Product model	NVR2XX-4KS2 Series
Version	V4.000.0000002.0
Software package information	DH_NVR2XXX-4KS2_MultiLang_V4.000.0000002.0.R.191205.zip
Onvif Version	2.4.1
OS requirement	None
Release date	12/20/2019

1.2 New Features

Feature	Description
SMD function	<ul style="list-style-type: none">① Support configuring SMD functions on IP cameras, such as enable switch, sensitivity and effective target.② Support SMD alarm event, reusing MD alarm configuration.③ Support filtered query and playback for human and vehicle.④ Support displaying SMD rectangle on human and vehicle in live view.⑤ Support displaying SMD rectangle on human and vehicle in playback.⑥ Search and export SMD events.⑦ Modified SMD playback start point to start from 10s ahead of the recorded video.
Web browse optimization	<ul style="list-style-type: none">① On the basis of single NIC and PoE channel jump, dual NIC network segment crossing jump is added for the web.② For safety concerns, an enable switch is added for virtual machine. The switch is enabled by default, and the jump to the web will fail if it is disabled.

1.3 Fixed Bugs

The fixed bugs are included in the chapter 1.2 New Features.

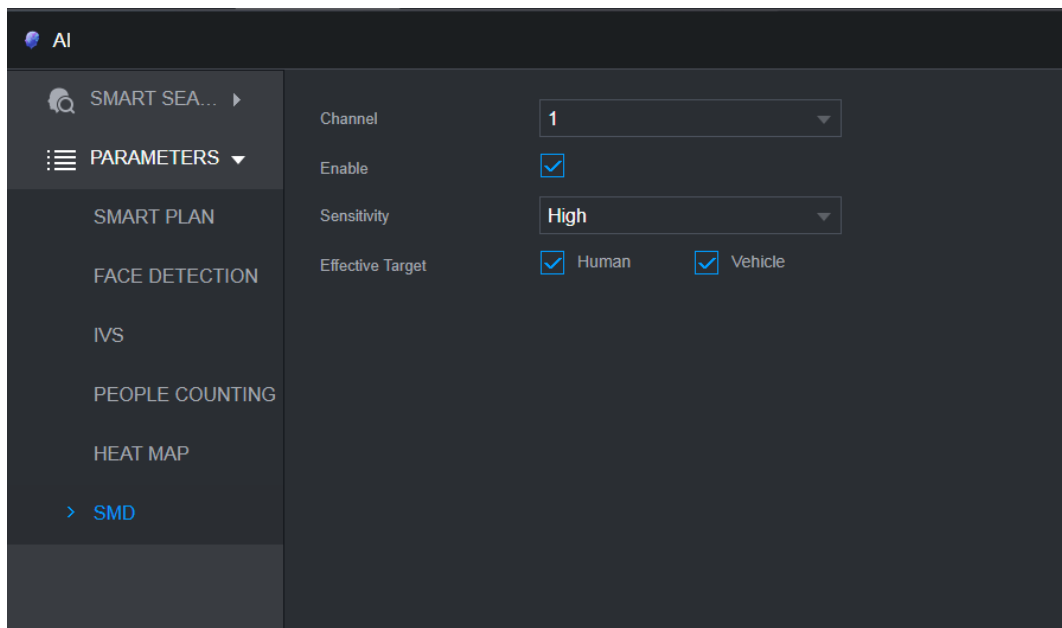
1.4 Instructions for New Features

1.4.1. SMD Function

MD (motion detection) has a problem of false alarms, the change of brightness, shaking of leaves or the device, or a rain will trigger a motion detection alarm. Based on the MD function, SMD (Small Motion Detection) is

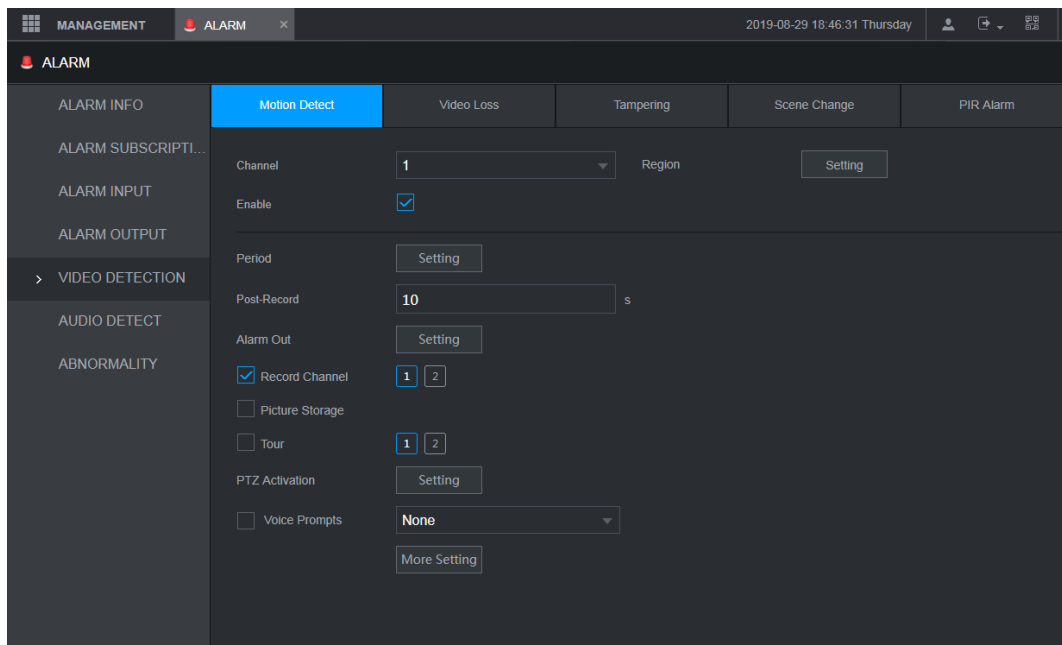
aimed to improve the practical value of motion detection by intelligently analyzing and distinguishing human and vehicle in videos. Alarm event will be triggered only when human or vehicle is detected.

- i. **SMD Configuration:** Includes enable switch, sensitivity and effective target.



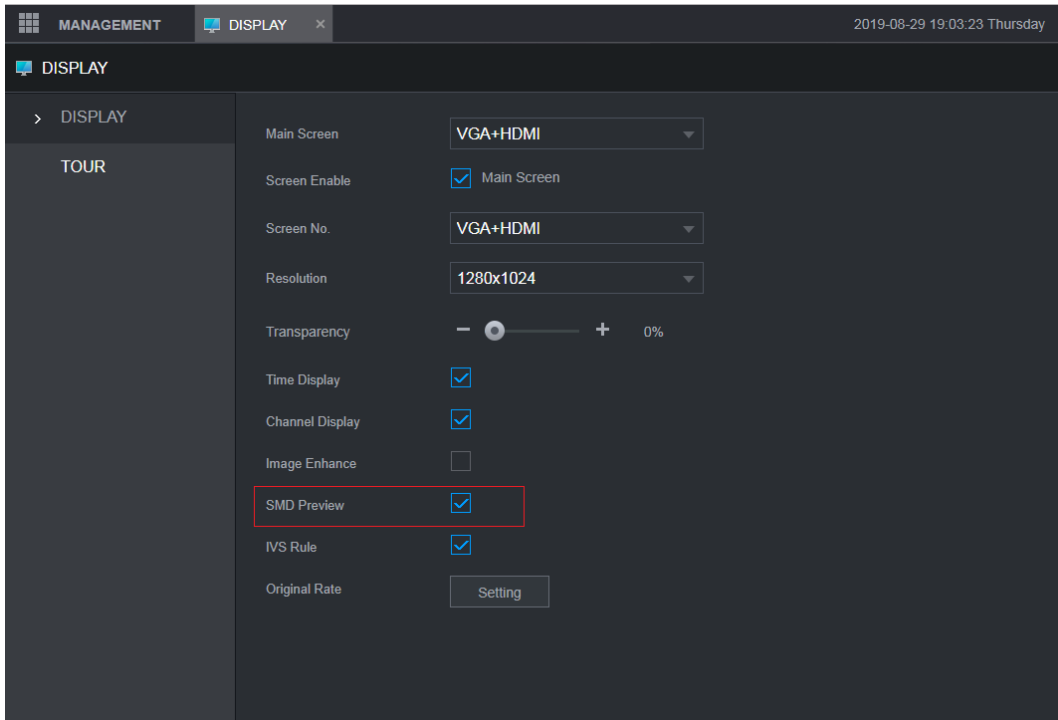
- ii. **SMD alarm configuration**

- SMD reuses alarm configuration of MD.
- When SMD is enabled, MD will be enabled synchronously and its alarm configuration will be applied to SMD.
- When MD is disabled, SMD will be disabled synchronously.
- When SMD is disabled, MD continues working.

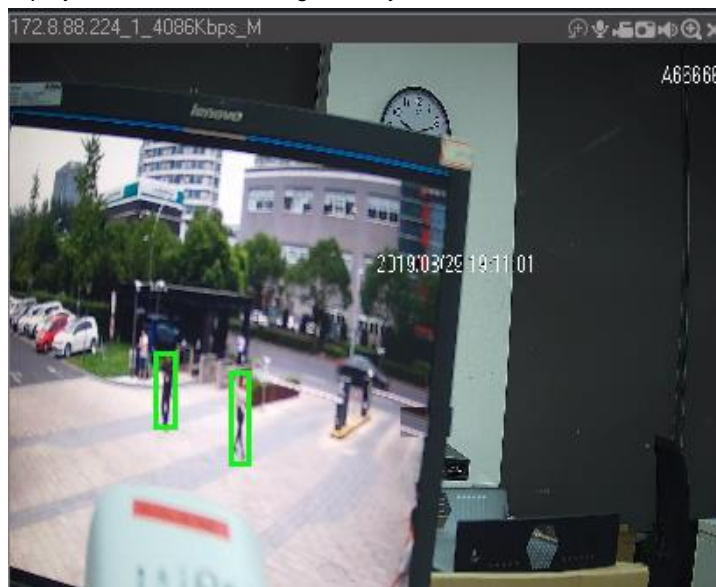


- iii. **SMD rectangle displayed on human and vehicle**

You can enable **SMD Preview** on **Display** interface to display SDM rectangle on human and vehicle.

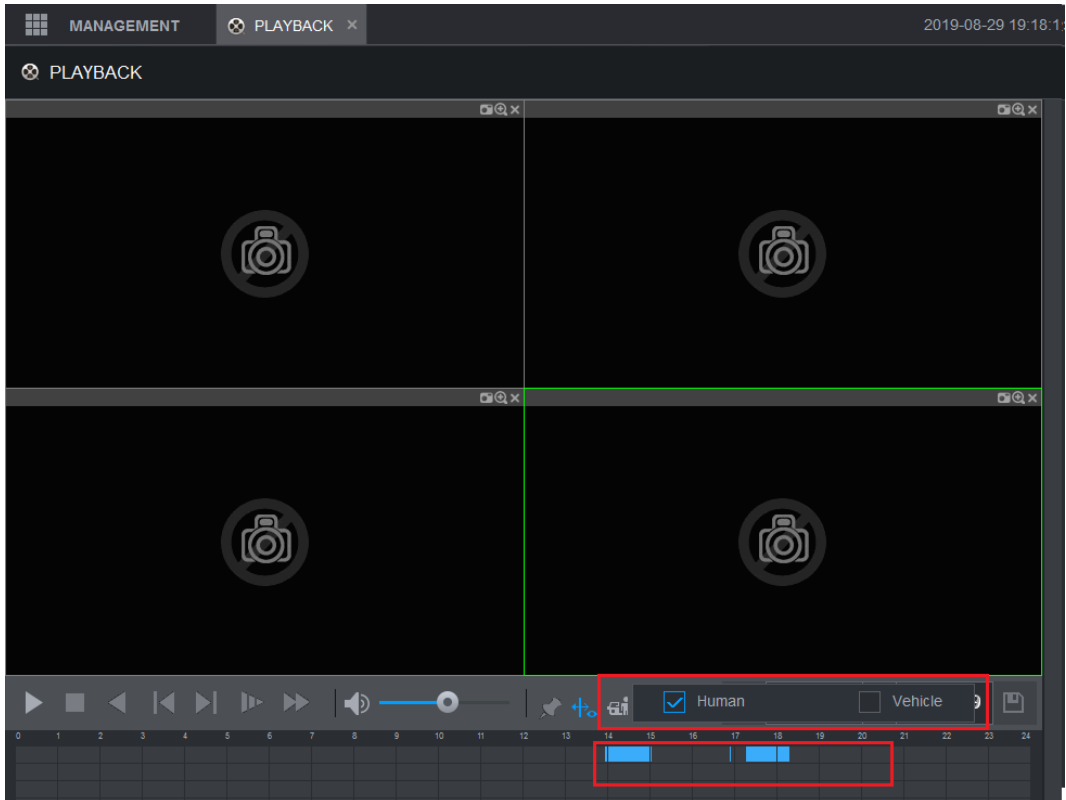


SMD rectangles are displayed as follows, flashing in every 2 seconds.



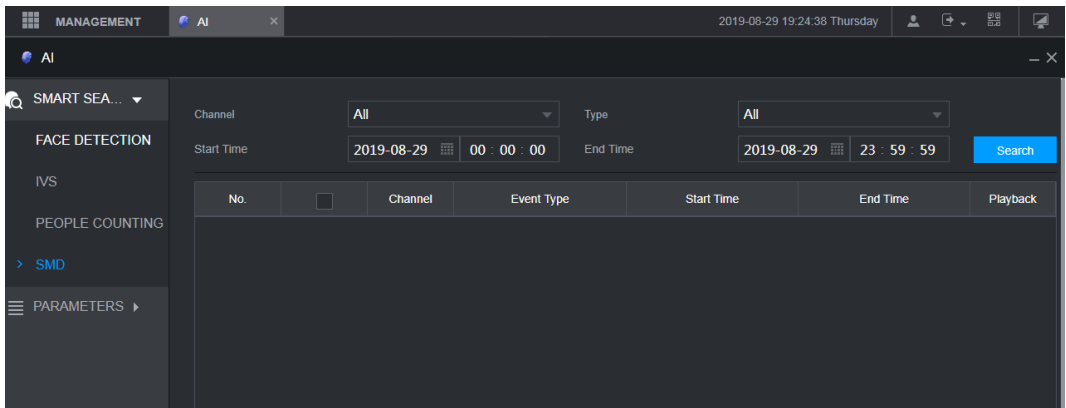
iv. **Filtered query and playback for human and vehicle**

- Query files are displayed in the color of blue.
- Enable switch reuses the switch of smart rules.
- Video playback by filtered result.



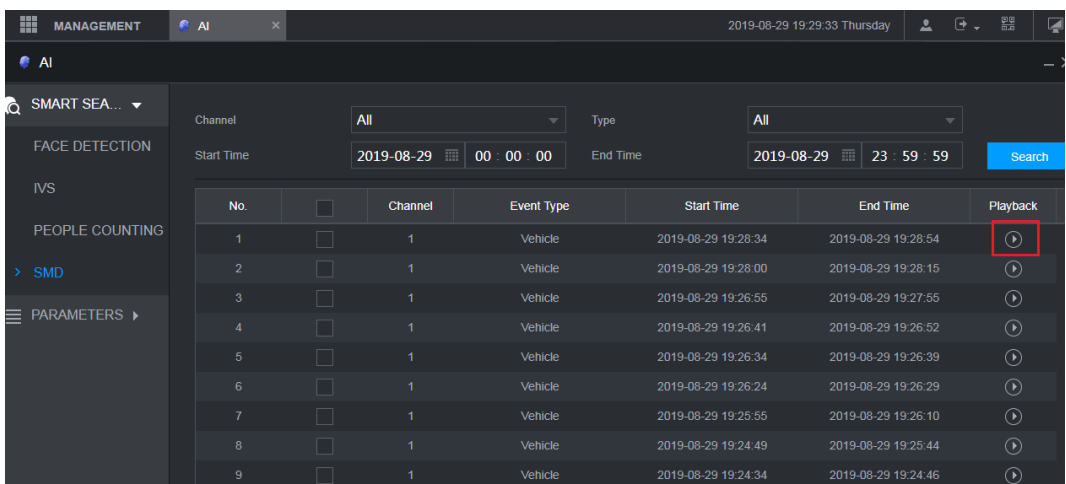
v. SMD search on AI interface


You can search for SDM event on the **AI** interface by time, channel, human and vehicle.

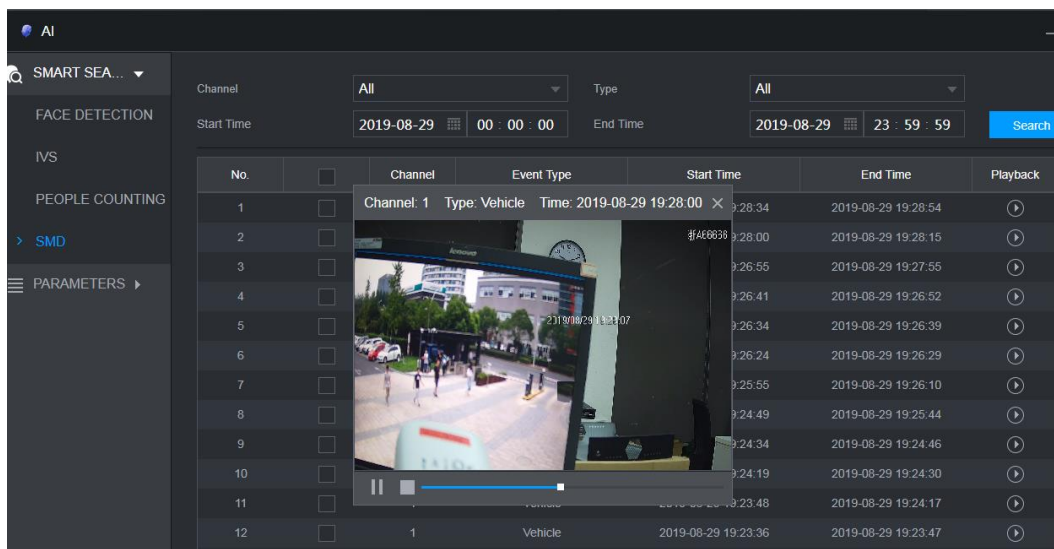


vi. SMD playback on AI interface

You can directly play videos in **Playback** column from start time to end time by filtered results.

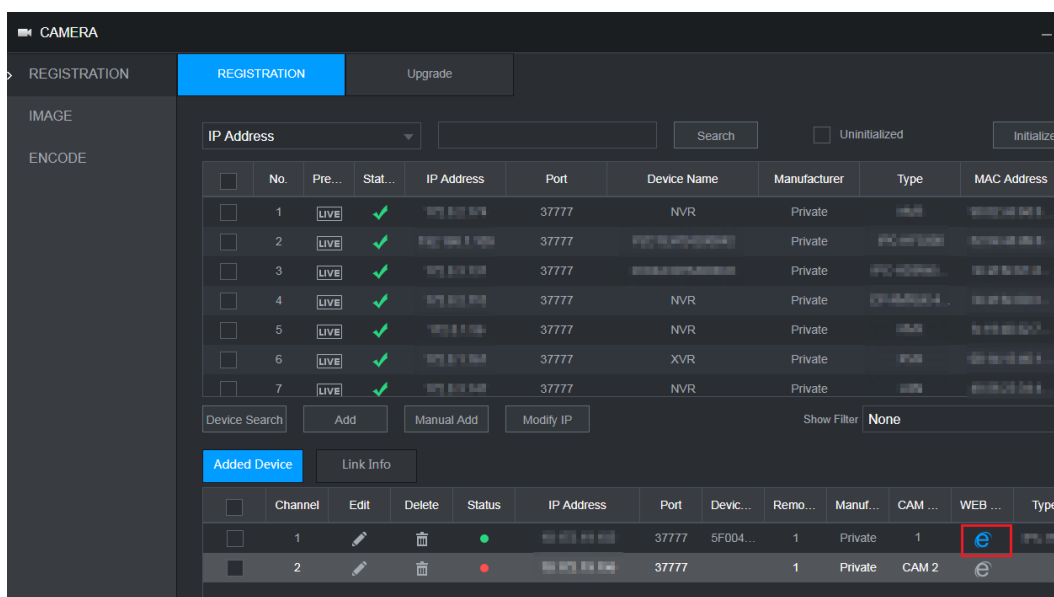



Click , and then a player will be prompted to play video.

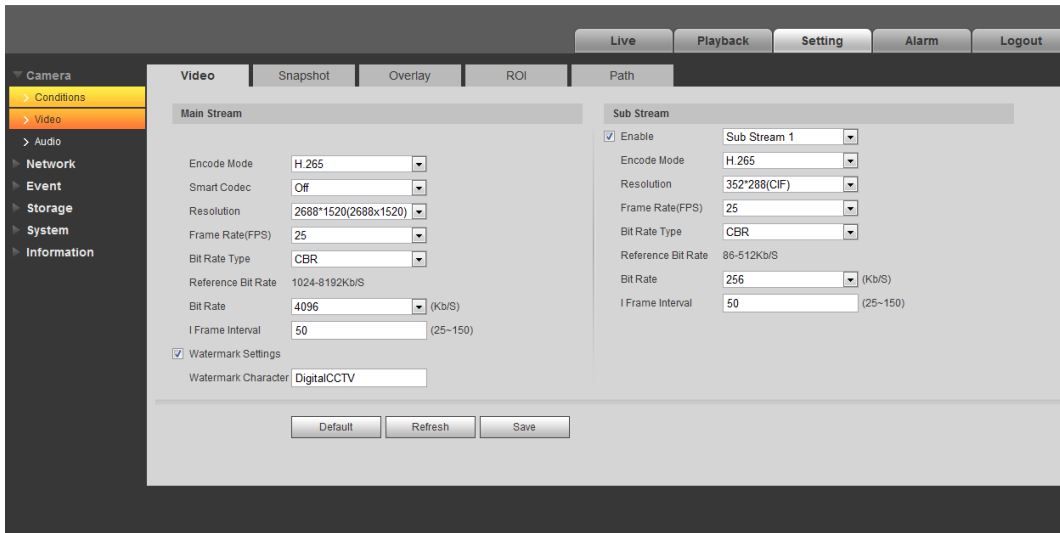


1.4.2. Web Browse

You can visit the web of a remote device to finish configuration through the WEB Browse function of NVR, instead of visiting the remote device separately.



Click , and then you can visit the web of a remote device to complete normal operations.



1.5 Compatibility

After updating to latest new baseline version V4.000.0000002.0, user cannot update back to versions lower than version V4.000.0000002.0.

1.6 Software Environment

Model	Version
HDW3241T-AS HDW3441T-AS HDW3541T-AS HDBW3241R-ZAS HDBW3441R-ZAS HDBW3541R-ZAS HDBW3241E-AS HDBW3441E-AS HDBW3541E-AS HFW3241T-ZS HFW3241T-ZAS HFW3441T-ZS HFW3441T-ZAS HFW3541T-ZS HFW3541T-ZAS HDW3241T-ZAS HDW3441T-ZAS HDW3541T-ZAS IPC-HFW3241M-AS IPC-HFW3441M-AS IPC-HFW5443K-AS-X IPC-HFW5443K-AS IPC-HFW5443K IPC-HDW4443T-A IPC-HDBW5443R IPC-HDBW5443R-AS IPC-HDBW5443R-AS-X	DH_IPC-HX5(4)(3)XXX-Leo_MultiLang_NP_Stream3_V2.800.0000000.1.R.190811.zip DH_IPC-HX5(4)(3)XXX-Leo_MultiLang_PN_Stream3_V2.800.0000000.1.R.190811.zip General_IPC-HX5(4)(3)XXX-Leo_Eng_NP_Stream3_V2.800.0000000.1.R.190811.zip General_IPC-HX5(4)(3)XXX-Leo_Eng_PN_Stream3_V2.800.0000000.1.R.190811.zip
DH-IPC-HFW2130M-AS-I1-0360B	2.6.01.05.08450 DH_IPC-HX2XXX-Eos4_Chn_PN_V2.680.0000000.2.R.190410.zip
DH-IPC-HFW2230M-AS-I1-0360B-V2	2.6.01.05.08988 DH_IPC-HX2XXX-Eris_Chn_PN_V2.622.0000000.8.R.190420.zip
DH-IPC-HFW2220F-VFAS-2808	2.1.02.01.18067 DH_IPC-HFW2XXX-Alps_Chn_PN_V2.622.0000000.31.R.171229.zip
DH-IPC-HFW2433M-AS-I1-0360B	2.6.01.05.08992 DH_IPC-HX2XXX-Eris2_Chn_PN_V2.622.0000000.8.R.190420.zip
DH-IPC-HDBW1230EP-0280B-S2	2.6.01.05.08459 DH_IPC-HX1XXX-Eos4_Eng_P_V2.680.0000000.2.R.190410.zip
DH-IPC-HFW2231TP-VFS-27135	2.6.01.05.07530 DH_IPC-HX2X3X-Rhea_MultiLang_PN_Stream2_V2.800.0000005.0.R.190325.zip
DH-IPC-HFW2831TP-ZS-3711	2.6.01.05.06114 DH_IPC-HX2(1)XXX-Sag_EngSpnFrn_NP_V2.622.0000000.18.R.190109.zip

DH-SD6C82FB-GN DH-SD6C82E-GN	2.6.02.05.00145 General_SD6CXXX-GN-BM_MCU_V2.301.0000000.9.R.180814.zip
DH-SD6CE230U-HNI	2.6.01.05.06726 DH_SD-Eos_MultiLang_PN_Stream3_V2.623.0000000.17.R.190119.zip
DHI-DSS7016D-S2	General_OverseasDSS7016S2_Eng_Basic_V1.000.0000000.0.R.20181130.tar.gz
DSS7016D-S2-I	During development.
DSSC9100/C9505	During development.
IBSP-PRO	2.7.01.07.00243 General_iBSP_Chn_Oracle_IS_V4.000.0000001.0.R.20190122.tar.gz
H8900	2.7.01.08.00410 General_DSS-H8900_Chn_Basic_V3.001.0000001.7.R.20190131.tar.gz
NKB1000	General_NETKB1000_Chn_V2.610.0000.4.R.20161024.zip
NKB5000	DH_NKB5000_Chn_V3.210.0003.0.R.170930.BIN
NVD0405DH-4K	General_NVD0405DH-4K_Chn_P_V3.200.0002.00.R.20170713.zip
NVD0905DH-4I-4K	General_NVD0905DH-4K_Chn_V3.200.0003.0.R.170509.BIN
SmartPSS	DH_SmartPSS_ChnEng_Win32_IS_V2.02.0.R.171124.zip
DMSS	2.1.02.01.10709 General_DMSS-IOS-Phone-Lite-Device_Internet_Basic_IS_V3.24.000.R.140928. ipa
Player	General_Player_Chn_WIN32_V3.44.0.R.170421.zip
ConfigTool	General_ConfigTool_ChnEng_V4.011.0000001.4.R.20190305.zip
NetSDK	General_NetSDK_Chn_Win64_IS_V3.050.0000005.3.R.190225.7z
DiskManager	

1.7 Pending Issues

None.

1.8 Update Guide

None.

ZHEJIANG DAHUA VISION TECHNOLOGY CO., LTD.

Address: No.1199, Bin'an Road, Binjiang District, Hangzhou, P.R. China

Postcode: 310053

Tel: +86-571-87688883

Fax: +86-571-87688815

Email: overseas@dahuatech.com

Website: www.dahuasecurity.com