

**NVR1BXXHC-E-EZIP**  
**V4.000.0000000.0**

**Release Notes**

## Disclaimer

- These release notes are for reference only, and the actual product shall prevail.
- Succeeding products and release notes are subject to change without notice.
- If there is any uncertainty or controversy, please refer to our final explanation.

## Trademarks

All the company names and trademarks mentioned herein are the properties of their respective owners.

# Table of Contents

<b>Foreword</b> .....	<b>1</b>
<b>Release Notes</b> .....	<b>1</b>
1.1 Overview .....	1
1.2 Product Introduction .....	1
1.3 New Features .....	1
1.4 Instructions for New Features .....	2
1.4.1 New NVR4.0 UI .....	2
1.4.2 Web Browser Display Normally Without Plug-in .....	4
1.4.3 Switching to H.265 Automatically .....	5
1.4.4 Recording Estimation .....	5
1.5 Fixed Bugs .....	6
1.6 Compatibility.....	6
1.7 Software Environment.....	6
1.8 Pending Issues.....	6
1.9 Update Guide .....	6

## 1.1 Overview

Item	Description
Product	Network video recorder
Version	V4.000.0000000.0
Software package information	EZIP_NVR1BXXHC-E-EZIP_MultiLang_V4.000.0000000.0.R.190910.zip
Product model	NVR1B04HC/E-EZIP NVR1B08HC/E-EZIP NVR1B04HC-4P/E-EZIP NVR1B08HS-8P/E-EZIP
ONVIF version	2.4.2
OS requirement	None
Release date	September 18, 2019

## 1.2 Product Introduction

This product is mainly used indoors. Combined with IP cameras, you can use this NVR to complete real-time monitoring and recording. It supports configuring basic parameters by using mouse, and you can build a security monitoring network through web or other professional software developed by Dahua. Product functions include real-time monitoring, record playback, alarm and other auxiliary configuration functions.

## 1.3 New Features

Feature	Description
Newly added	
<b>NVR4.0 New UI</b>	<ul style="list-style-type: none"> <li>① It is to realize NVR interface based on the XVR 4.0 interface style. The same functions are basically kept.</li> <li>② Supports vector font library.</li> <li>③ Web interface style is consistent with the local menu.</li> </ul>
<b>Network Security Baseline V2.0</b>	<ul style="list-style-type: none"> <li>① Supports system firmware encryption.</li> <li>② Supports 802.1x access authentication.</li> <li>③ TFTP upgrade: The trusted upgrade and secure boot by Uboot.</li> <li>④ Supports network security requirements such as firewall.</li> </ul>
<b>Web browser displays normally without plug-in</b>	<ul style="list-style-type: none"> <li>① Version requirements: For Chrome version number lower than 42, and Firefox version lower than 52, there is a plug-in. For browsers</li> </ul>

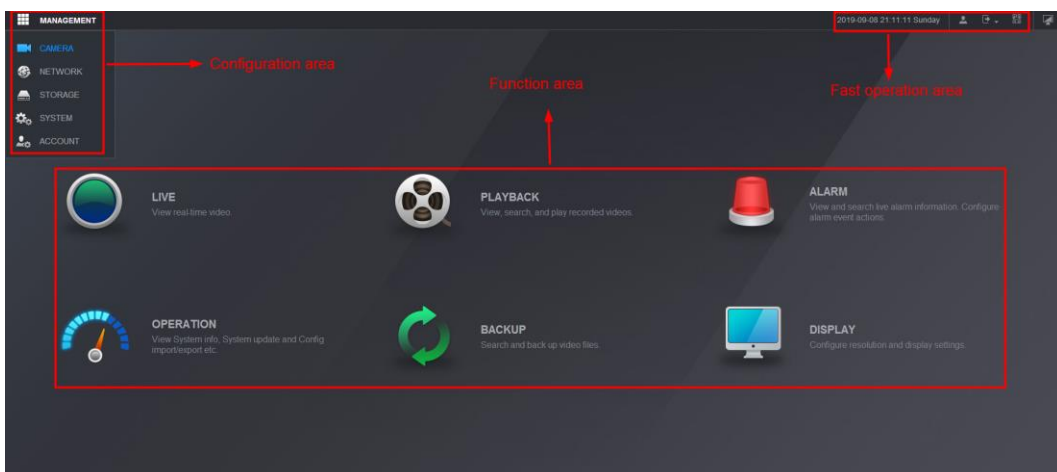
	<p>higher than the above versions, there is no plug-in.</p> <p>② Supported contents are mainly based on video.</p>
<b>ONVIF optimization</b>	<p>① Supports ONVIF18.12 tool.</p> <p>② Supports profile G.</p>
<b>International requirements</b>	<p>① Adds Shut down button before initialization.</p> <p>② Adds the country, language, and format settings.</p> <p>③ Supports synchronizing audio, format, and time zone to the front-end device when connecting to it.</p>
<b>Automatic H.265</b>	<p>① Automatic setting front-end adopts H.265 encoding when registering remote device to the NVR.</p>
<b>Auto registration</b>	<p>① The whole series supports the auto registration function suitable to connect to all platforms.</p> <p>② Auto registration through domain name.</p>
<b>Hard disk estimation</b>	<p>① Adds hard disk estimation function.</p> <p>② Supports the hard disk storage capacity estimation based on the resolution stream of the current access channel.</p>
<b>MAC address binding</b>	<p>① Supports setting the MAC address for newly added users, and only allows access to users through specific MAC devices.</p>

## 1.4 Instructions for New Features

### 1.4.1 New NVR4.0 UI

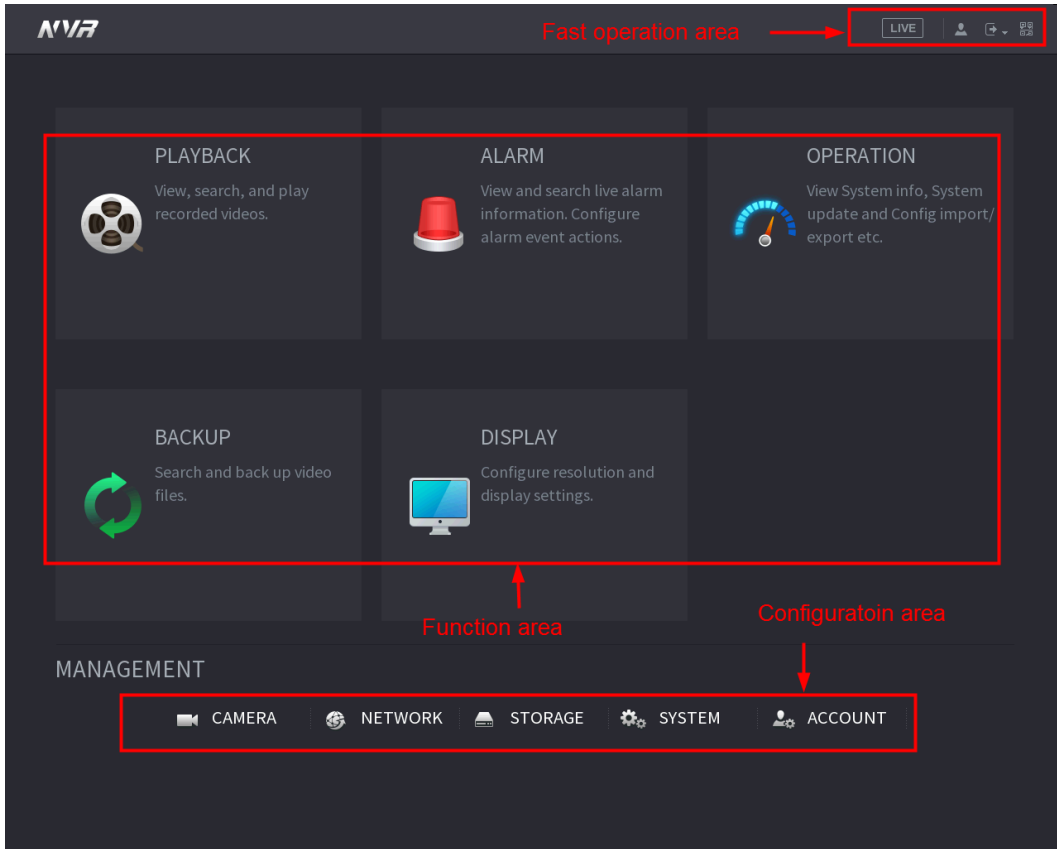
#### 1.4.1.1 Interface Style

The new UI uses flat design which is more consistent with users' habits. It's divided into configuration area, function area, fast operation area and page turning area. The main interface is as follows.



## 1.4.1.2 Interface Display

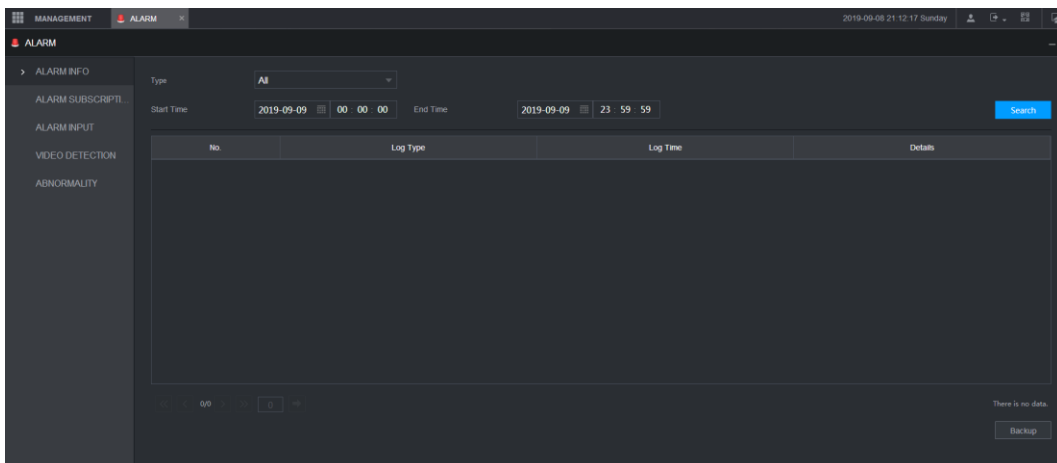
The interfaces of local configuration and web are almost identical. There are slight differences in operating on two interfaces.



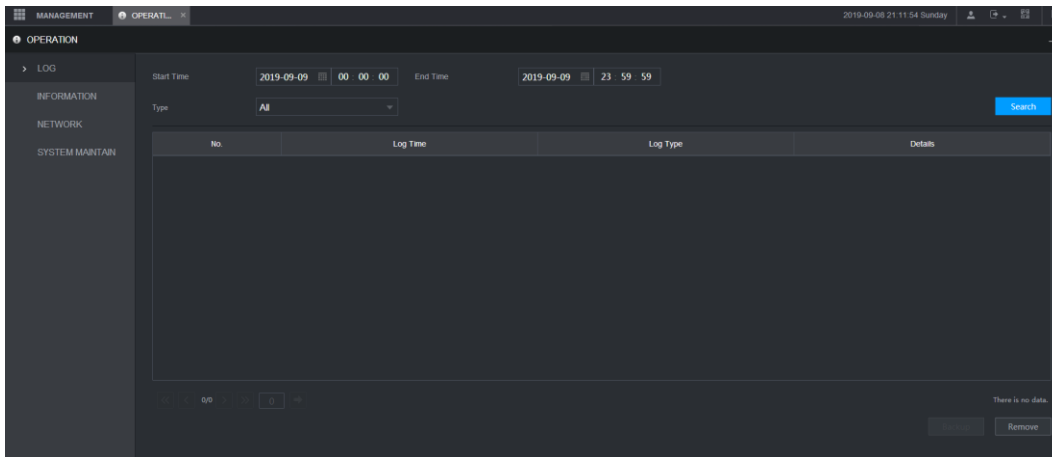
## 1.4.1.3 Menu Integration

Related functions are centralized and categorized. Logs are categorized according to corresponding functions.

1) Event logs are integrated into alarms.



2) System logs are integrated into operations.



## 1.4.2 Web Browser Display Normally Without Plug-in

### 1.4.2.1 Versions of Web Browsers

Web Browser	Versions with plug-in	Versions without plug-in
Chrome	Version number < 42	Version number >= 42
Firefox	Version number < 52	Version number >= 52
Internet Explorer	All Versions	/
Edge	/	All Versions

### 1.4.2.2 Differences between Versions with Plug-in and Versions without Plug-in

Difference	Plug-in version of web browser	Plug-in free version of web browser
Channel navigation bar button	Included.	Not included.
Video overlay text	Included.	Not included.
Install plug-in to view channel video	Included.	Not included.

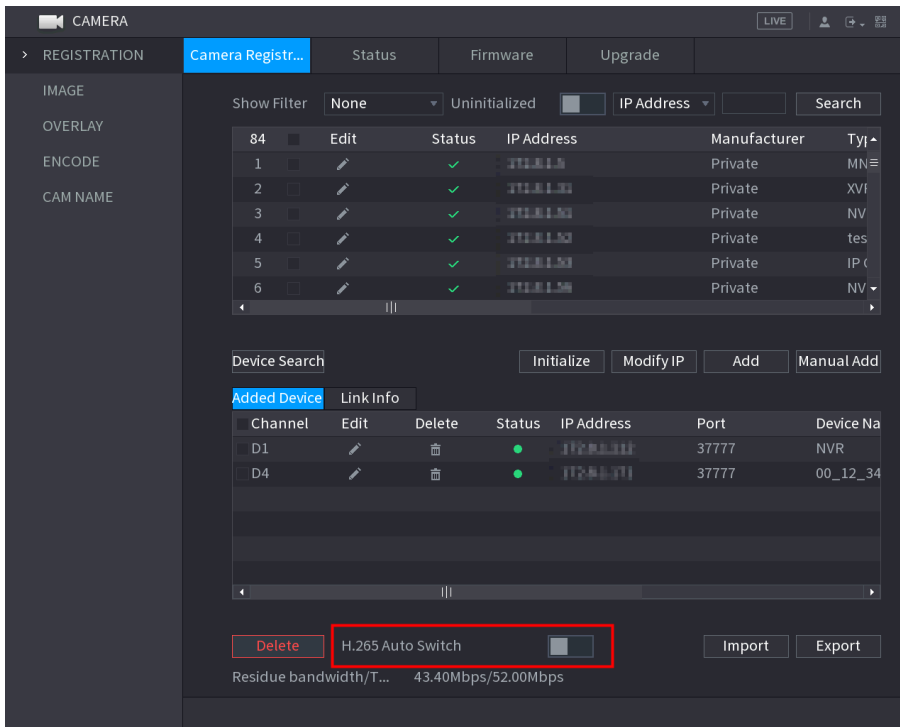
### 1.4.2.3 Functions Supported by Plug-in Free Version

Function	Description
Surveillance screen	Real-time monitoring (main stream, sub stream)
	Full screen
	Window split
Playback	Video playback
	Full screen playback
	Time bar

Function	Description
	Record query
Remote device	Importing and exporting of remote devices
Configuration	Camera
	OSD overlay
	POS setup - POS position setting
	Motion detection area setting

### 1.4.3 Switching to H.265 Automatically

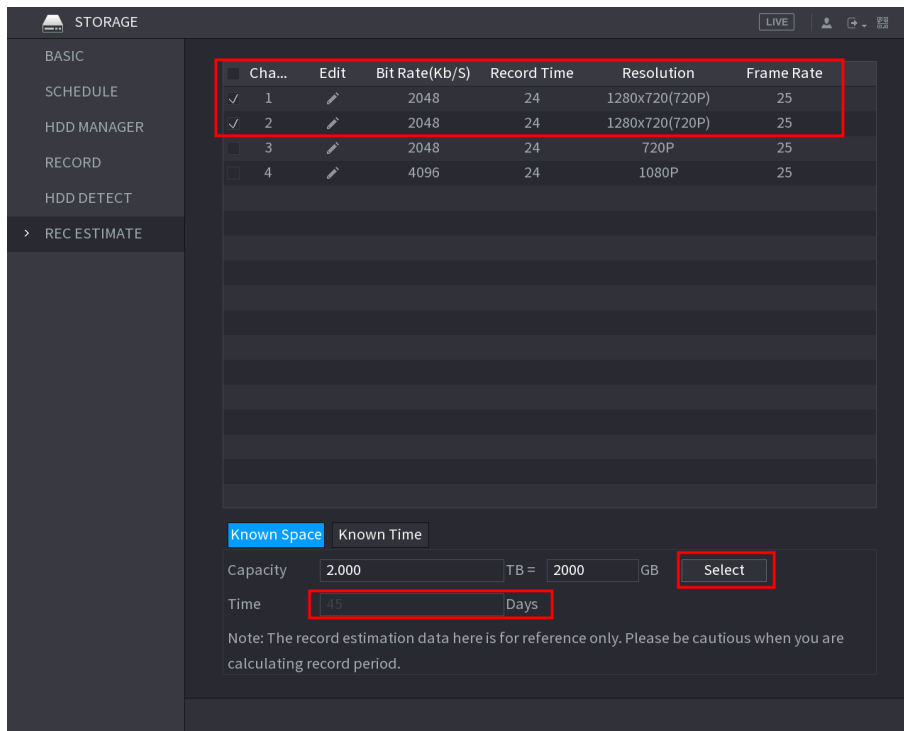
After **H.265 Auto Switch** is enabled, remote devices supporting H.265 will be adjusted to H.265 encoding format automatically. You can enable **H.265 Auto Switch** on the following local GUI interface.



### 1.4.4 Recording Estimation

Recording estimation calculates the record time and required HDD capacity according to the resolution and bit rate of the current channel, so as to provide estimated information for users to choose appropriate HDDs, and help users save costs.





## 1.5 Fixed Bugs

The fixed bugs are included in chapter 1.3.

## 1.6 Compatibility

None.

## 1.7 Software Environment

Model	Version
EZ-IPC-B1B40P-0280B	EZIP_IPC-XXBXX-Eris2_EngSpnPrt_P_V2.622.0000000.9.R.190713.zip
EZ-IPC-B2B20P-ZS-2812	EZIP_IPC-XXBXX-Leto_EngSpnPrt_P_V2.680.0000000.2.R.190301.zip
DH-IPC-HDBW1230EP-0280B-S2	DH_IPC-HX1XXX-Eos4_Eng_P_V2.680.0000000.2.R.190410.zip
DH-IPC-HFW2431TP-VFS-27135	DH_IPC-HX2X3X-Rhea_MultiLang_PN_Stream2_V2.800.0000008.0.R.190619.zip
DH-IPC-HFW2831TP-ZS-3711	DH_IPC-HX2(1)XXX-Sag_EngSpnFrn_PN_V2.622.0000000.18.R.190109.zip
DSS-PRO	General_DSS-PRO_Win64_IS_V7.002.0000002.1.R.20190418.exe

## 1.8 Pending Issues

None.

## 1.9 Update Guide

1. You can upgrade the NVR by ConfigTool, web and USB flash drive. For details, see Upgrade Guide.

2. Services such as recording and live view will be paused during the upgrade process. The NVR works normally after upgrade and rebooting.
3. The upgrade does not affect previous settings of the NVR.
4. Do not power off during the upgrade process, or the NVR will not boot up properly.