



DSS7016D/DR-S2 V8.000.0000004.0

Release Notes



Legal Information

Copyright

© 2021 ZHEJIANG DAHUA VISION TECHNOLOGY CO., LTD. All rights reserved.

This document cannot be copied, transferred, distributed, or saved in any form without the prior written permission of Zhejiang Dahua Vision Technology Co., LTD (hereinafter referred to as "Dahua").

The products described in this document may contain the software that belongs to Dahua or the third party. Without the prior written approval of the corresponding party, any person cannot (including but not limited to) copy, distribute, amend, abstract, reverse compile, decode, reverse engineer, rent, transfer, sublicense the software.

Trademarks

The @hua logo is shown in three variations: a standard version, a version with a red accent on the 'a', and a version with "TECHNOLOGY" written below it. These are followed by the text "and" and the "HDCVI" logo, which consists of the letters "HDCVI" in a bold, uppercase font. The text "are the trademarks or registered trademarks of Dahua." follows.

All other company names and trademarks mentioned herein are the properties of their respective owners.

Disclaimer

- These release notes are for reference only. Slight differences might be found between the release notes and the product.
- Succeeding products and release notes are subject to change without notice.
- If there is any uncertainty or controversy, we reserve the right of final explanation.

Table of Contents

Legal Information	I
Release Notes	1
1.1 Overview	1
1.2 New Features	1
1.3 New Feature Details	4
1.3.1 Video Call for System User	4
1.3.2 Playing Videos Stored on the Computer on Local Videos.....	4
1.3.3 Adding Multi-channel Devices	5
1.3.4 Storage Management	6
1.3.5 Configuring Center Recording Plans in Batches	6
1.3.6 Sound and Light Alarms.....	7
1.3.7 Alarm Events Linking HTTP URL Command.....	8
1.3.8 Alarm Protocols	8
1.3.9 Real-time Alarm Events.....	9
1.3.10 Soft Trigger	10
1.3.11 Intelligent Analysis.....	11
1.3.12 Automatically Lock the Client.....	14
1.3.13 Local Settings.....	15
1.3.14 Performance Mode	16
1.3.15 Pulling Live Streams from Devices.....	17
1.3.16 Storage of Local Setting Files, Logs and Cache Files	17
1.3.17 Service Log Debug.....	18
1.4 Compatibility	18

Release Notes

1.1 Overview

Item	Description
Product model	DSS7016D/DR-S2
Version	V8.000.0000004.0
Software package information	General_OverseasDSS7016S2_Eng_Basic_V8.000.0000004.0.R.20211230.tar.gz
OS requirement	CPU: Intel Xeon Silver 4114@ 2.2GHz 10 Core Processor Memory: 16 GB Network Card: 1 Gps Hard Disk Type: HDD 1 TB Free space: 500 GB or more
Release date	December 30, 2021

1.2 New Features

Feature	Description
Client login	<ul style="list-style-type: none">● Supports logging in to the client through domain name.● Added support for Arabic.
User management	<ul style="list-style-type: none">● Supports disabling logging in to multiple clients at the same time for the system user.● Supports video call when a user logs in to multiple clients at the same time.

Feature	Description
Device management	<ul style="list-style-type: none"> ● Supports adding encoding devices through IPV6. ● Supports adding devices through domain name. <ul style="list-style-type: none"> ➤ Device Type All devices (excluding LED) can be added to the system via domain name. ➤ Add devices through ONVIF protocol via domain name. ● Supports visiting the web page of devices added through P2P and auto registration. ● Add multi-channel devices and delete unnecessary channels. ● Automatically refresh the online and offline status of devices. ● Improved the procedures to add uninitialized devices. ● Import templates in batches and add the channel SN when importing P2P devices in batches. ● IPCs support ANPR. ● Supports adding access control devices with video intercom function. ● Supports copying a recording plan from one channel to another on the Device Config page.
Storage management	"Face/Alarm Pictures" and "License Plate Recognition Pictures" merge into "Images and Files".
Recording plan	<ul style="list-style-type: none"> ● Configure center recording plans in batches. ● Configure recording retrieval plans in batches and select the video stream of the recordings with the maximal retrieval cycle increased to 7 days.
Event	<ul style="list-style-type: none"> ● Added PPE detection and soft trigger. ● Configure alarm events linking HTTP URL command. ● Quick door opening with improved alarm linkage to access control. ● Configure and view alarm protocols. ● Improved layout of Real-time Events with tiled display of key information. ● Download and store pictures of alarm events on the PC. ● Search for more than 16 resources in Event History. ● Added door detector alarms for video intercom devices. ● Added sound and light alarms for alarm linkage.
Video wall	Optimized linkage to video walls.

Feature	Description	
Monitoring center	<ul style="list-style-type: none"> ● The live streams remain the same while switching between live view and playback. ● Add tag and channel name in the default name of downloaded videos. ● Seamless switches among live view streams. ● Voice talk with the channels of IVSS devices. ● Adjusted the order of device trees in the Live View page. ● Enable or disable the sound and light alarms of each device on the Live View page. ● Changed the ANPR snapshots from the license plate to the vehicle body. 	
Intelligent analysis	People Counting	<ul style="list-style-type: none"> ● View the real-time number of people entering, leaving and staying in the group, the light and remarks. ● Modify the number of people staying in the group and the content to be displayed for the green, yellow and red light. ● Search for historical statistics by channel or by group. ● View and export historical statistics to bar chart, line chart and list.
	Heat Map	<ul style="list-style-type: none"> ● Search for the heat map from each device. ● Export heat maps to BMP. ● Supports heat map passed through IVSS.
	In Area No. Analysis	<ul style="list-style-type: none"> ● Displays the daily, monthly and annual reports in the bar chart and line chart. ● Export statistics to PDF.
Access management	<ul style="list-style-type: none"> ● Optimized sending of Contacts and Private Password. ● Improved the procedures of sending contacts and private password. ● Improved the interaction logic in Access Management, such as canceling password confirmation for global control. ● When 2 locks are available, a video intercom device can unlock two doors simultaneously. 	
Download center	Improved the default name of downloaded videos.	
Person list	<ul style="list-style-type: none"> ● Person ID supports both letters and numbers, with a maximum of 30 characters. ● Increase the maximum size of face snapshots from 75 KB to 100 KB. 	
Access control	<ul style="list-style-type: none"> ● Improved the layout of the Advanced Rules page. 	
Visitor	<ul style="list-style-type: none"> ● Improved the interaction logic in Visitor. ● Set an email template so that emails can be sent to visitors and the person to be visited. ● Set visitor pass remarks. 	

Feature	Description
Local settings	<ul style="list-style-type: none"> Automatically lock the client. Improved the layout of the Local Settings page. Added Performance Mode (CPU First) to the Decoding Mode. Pull live streams directly from devices.
Others	<ul style="list-style-type: none"> Pull video streams from auto-registered devices. Improved storage directory of local setting files, logs and cache files of the client. Service Log Debug for easy troubleshooting.

1.3 New Feature Details

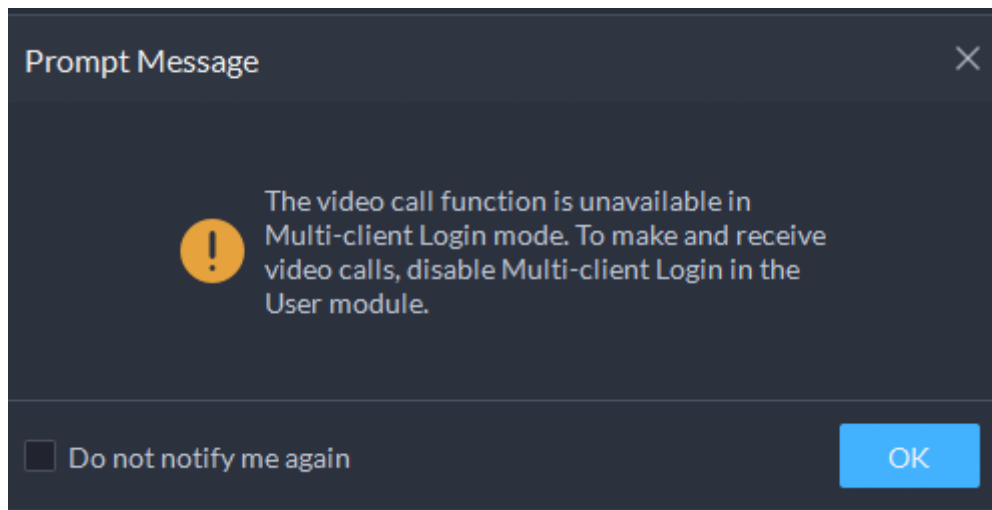
1.3.1 Video Call for System User

Problems:

- Earlier versions restrict the system user from performing video calls with permissions to log in to multiple clients at the same time, but the system user only logs in to one client in most cases.
- The system user cannot disable the multi-client login mode for video call in earlier versions.

Solutions:

Multi-client login mode cannot be disabled for video call in earlier versions. This is not practical when the system user needs to use the video call function.



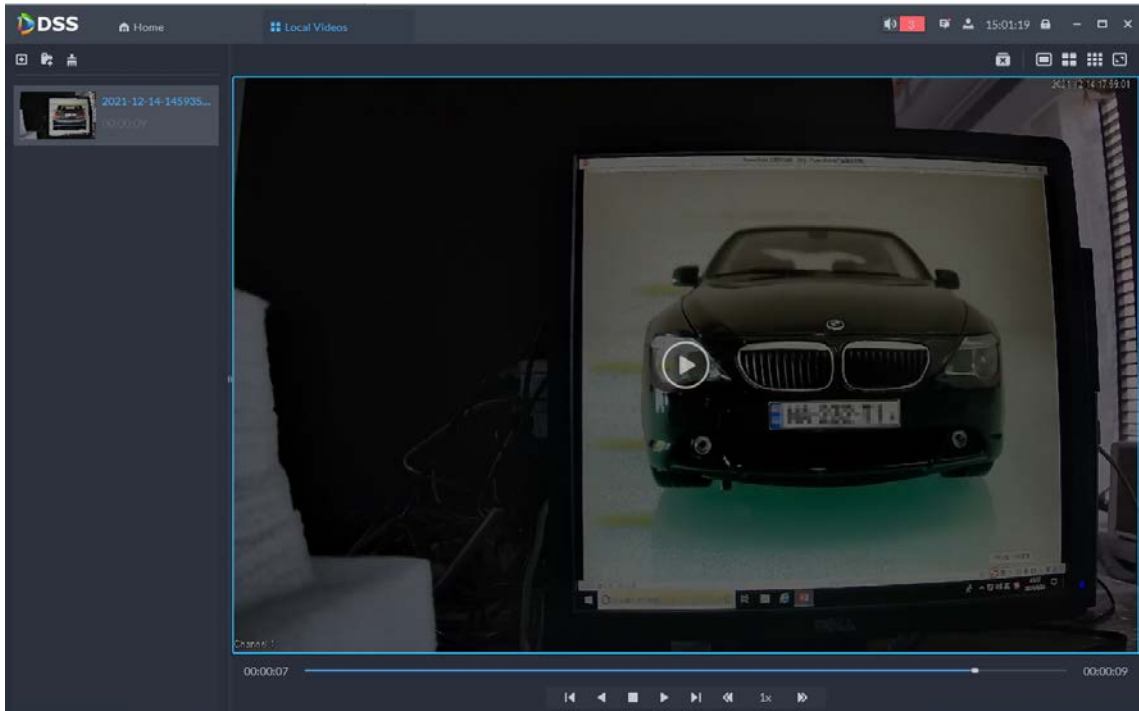
Only the system user can disable multi-client login for itself.

1.3.2 Playing Videos Stored on the Computer on Local Videos

Solutions:

- Users can play the downloaded videos on Local Videos, and take continuous snapshots, adjust videos images and digital zooming in and out.

- The screen can be split into multiple windows through clicking the icons on the upper-right corner to play multiple videos simultaneously.



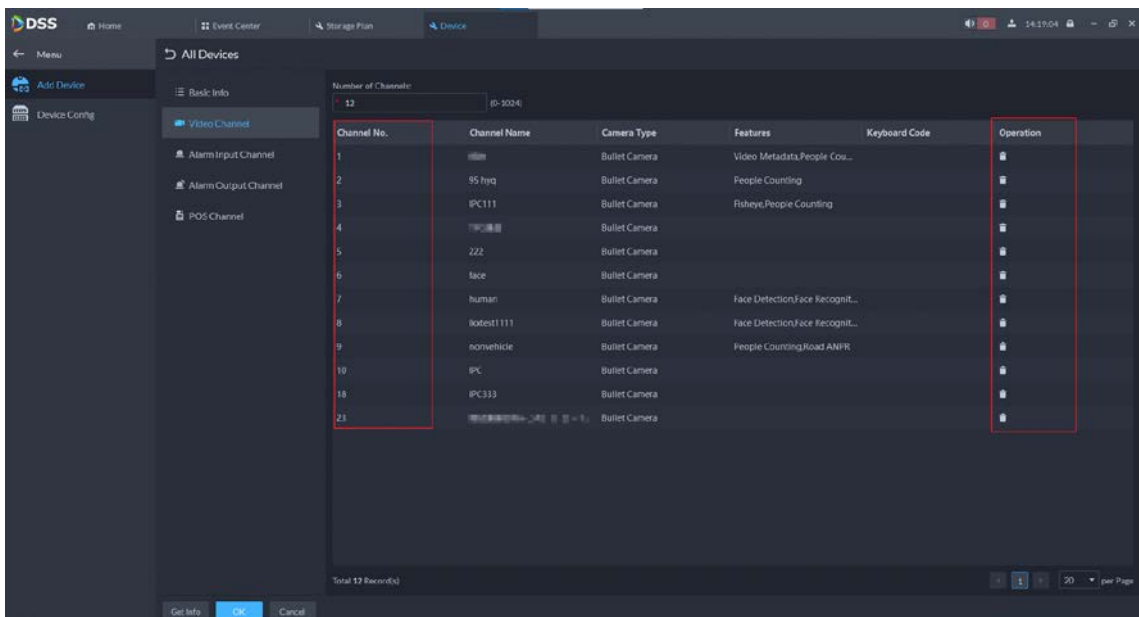
1.3.3 Adding Multi-channel Devices

Problems:

- When adding a multi-channel device to the system, all channels of the device were automatically added by default and cannot be modified.
- When the number of all channels reaches the license limit, no device can be added anymore.

Solutions:

Added a number for each channel and you can delete any of them.



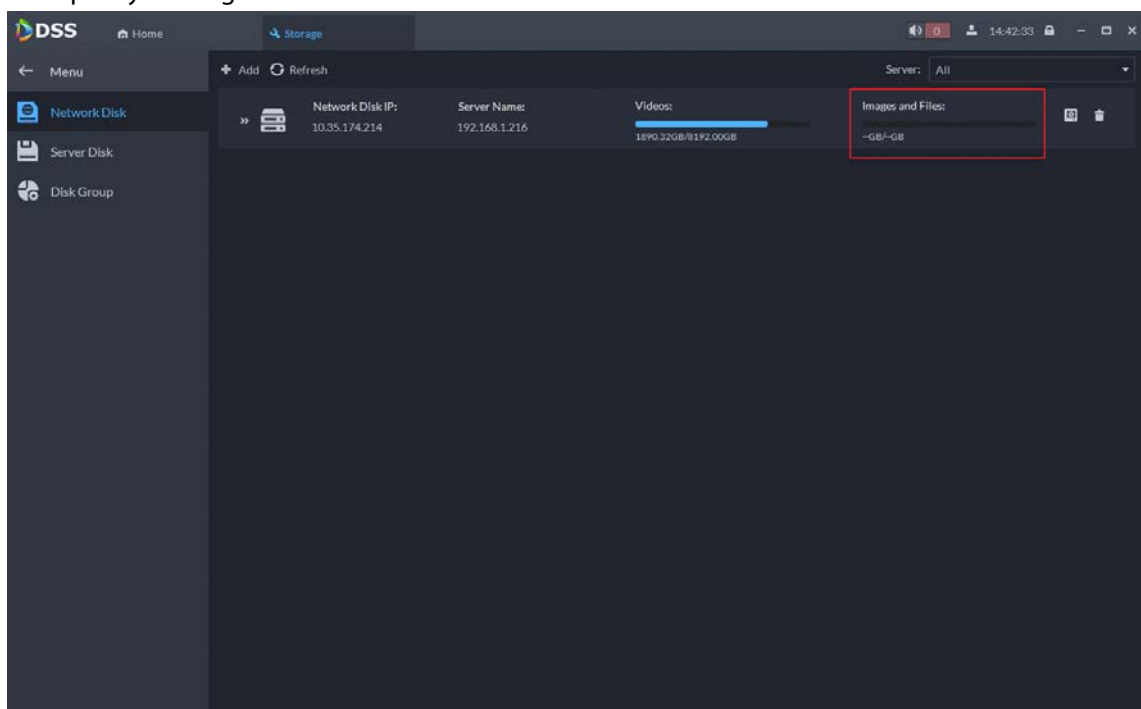
1.3.4 Storage Management

Problems:

- Face, alarm and video metadata pictures were stored in OSS disks and passing vehicle snapshots for license plate recognition were stored in CQFS disks, which caused inconvenience.
- Face, alarm and video metadata pictures can only be stored in local disks of the server with limited storage capacity.

Solutions:

- Unify the storage of face, alarm and video metadata pictures as well as passing vehicle snapshots in OSS disks. Unify the name as Images and Files to store face, alarm and video metadata pictures, passing vehicle snapshots and retrieval pictures from MPT devices.
- OSS disks to store face, alarm and video metadata pictures support IPSAN for expanded storage capacity of images and files.



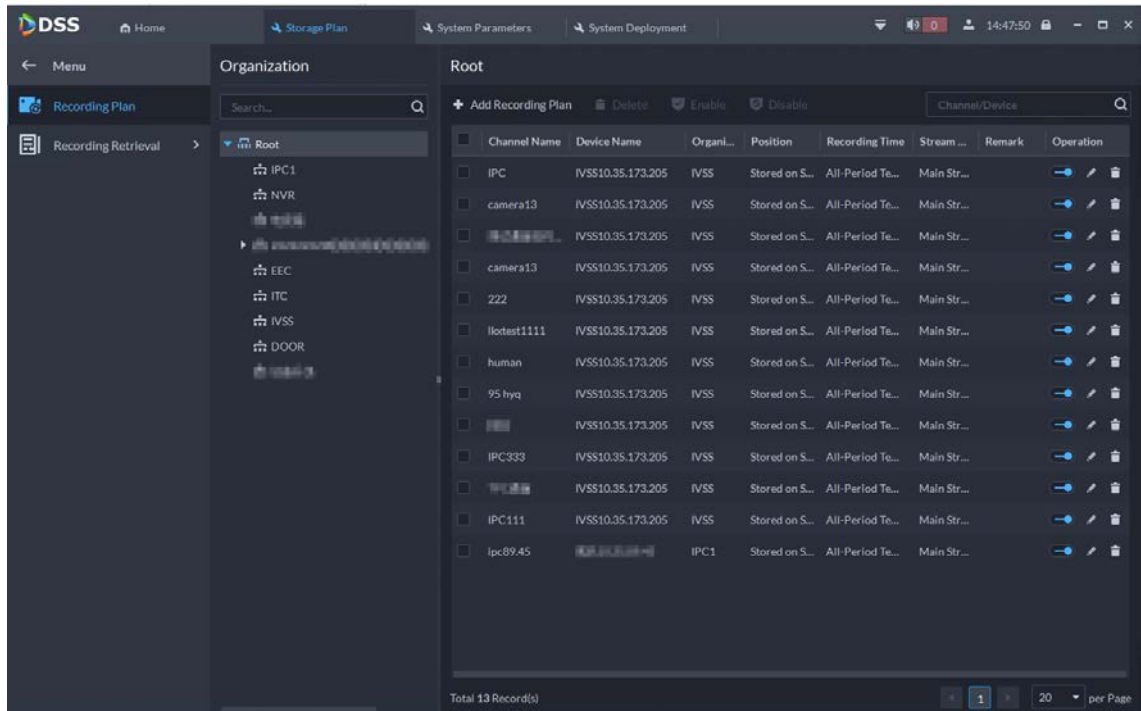
1.3.5 Configuring Center Recording Plans in Batches

Problem:

Users had to configure the center recording plan for each channel one by one.

Solutions:

Added **Recording Plan** and **Recording Retrieval**. Users can configure center recording plans for video channels in batches. After configuration, the recoding plan of each channel is displayed.



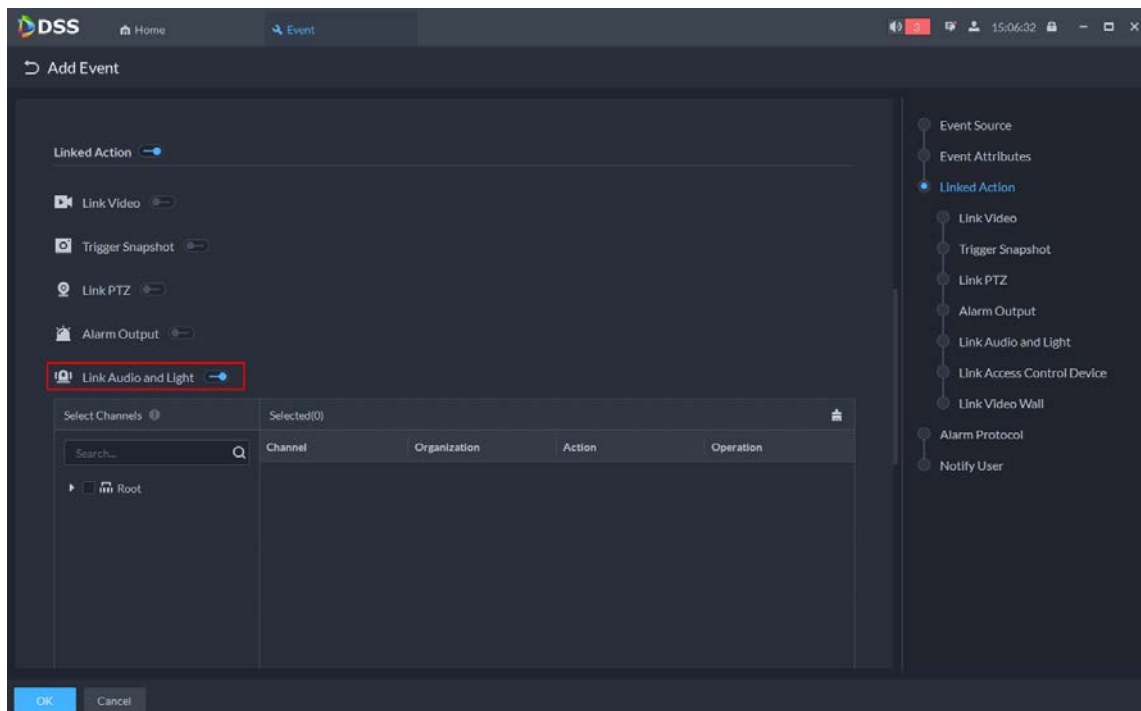
1.3.6 Sound and Light Alarms

Problem:

Sound and light alarms are needed to warn people of the event.

Solutions:

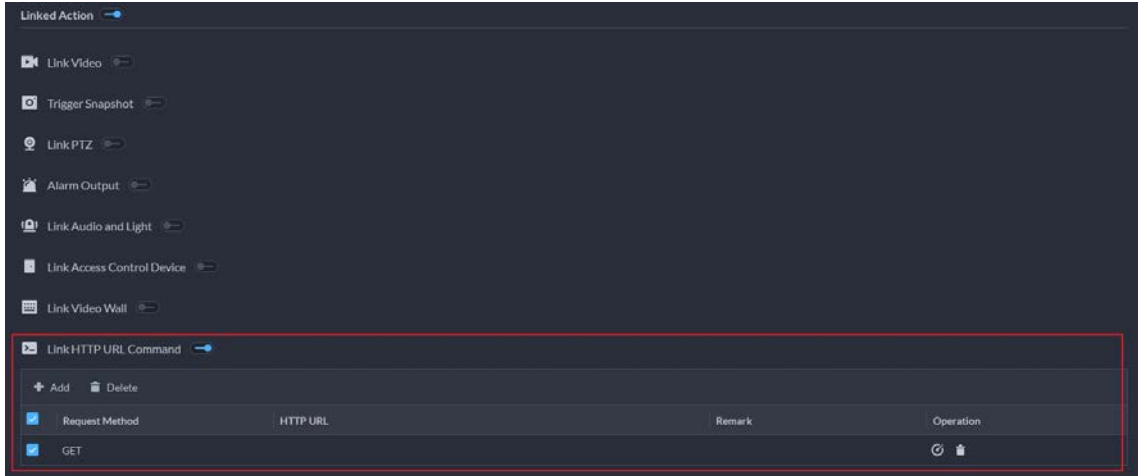
Users can enable **Link Audio and Light** when adding an event, so that the device will perform sound and light alarms when the event occurs.



1.3.7 Alarm Events Linking HTTP URL Command

Solutions:

- Added **Link HTTP URL Command** to **Event** configuration. After enabling the function, users can enter a HTTP URL command to link Dahua or third-party devices. When such an event occurs, the platform will execute the command.
- One-click to check whether the command performs normally.



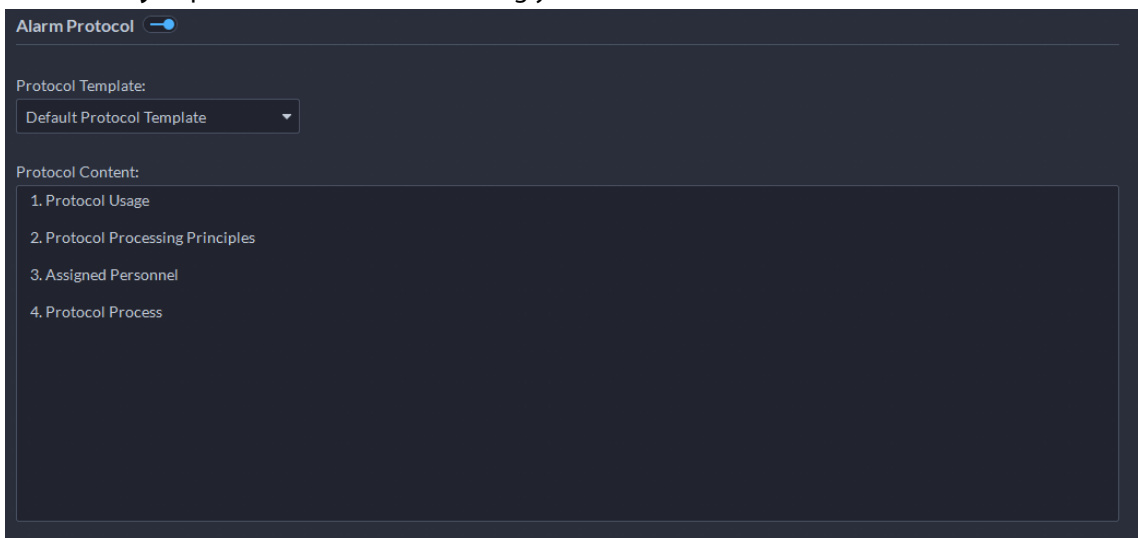
1.3.8 Alarm Protocols

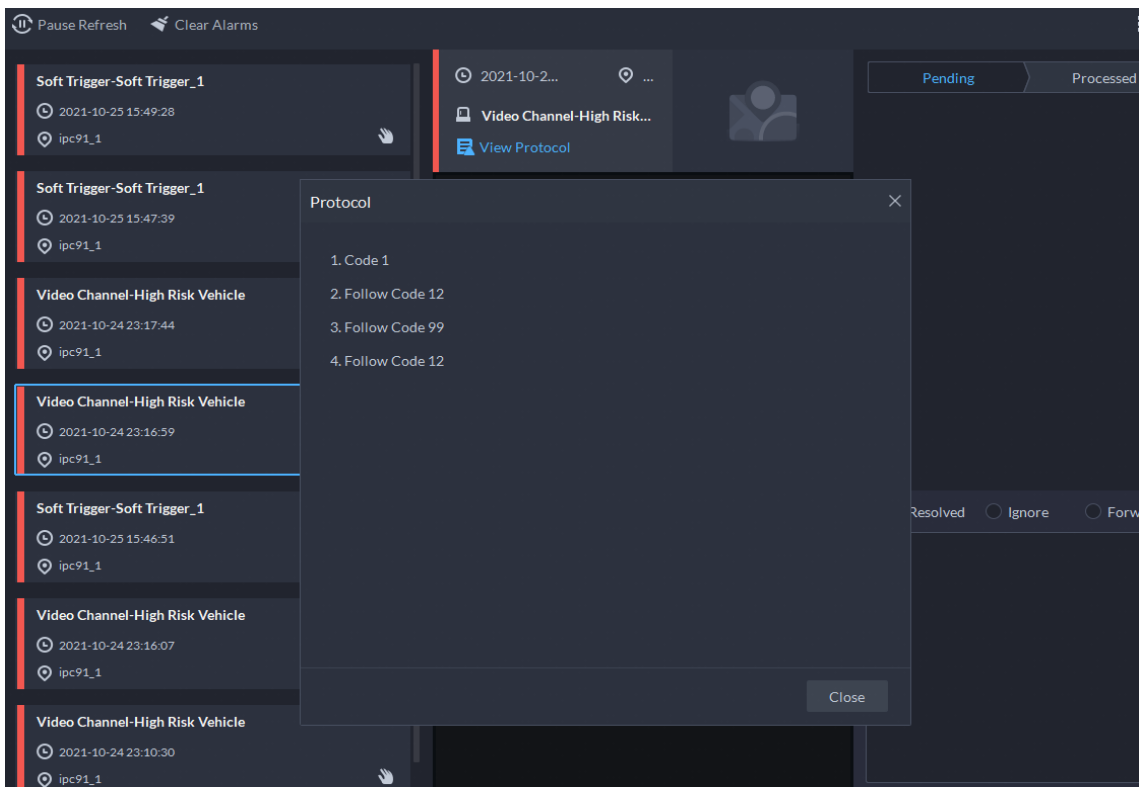
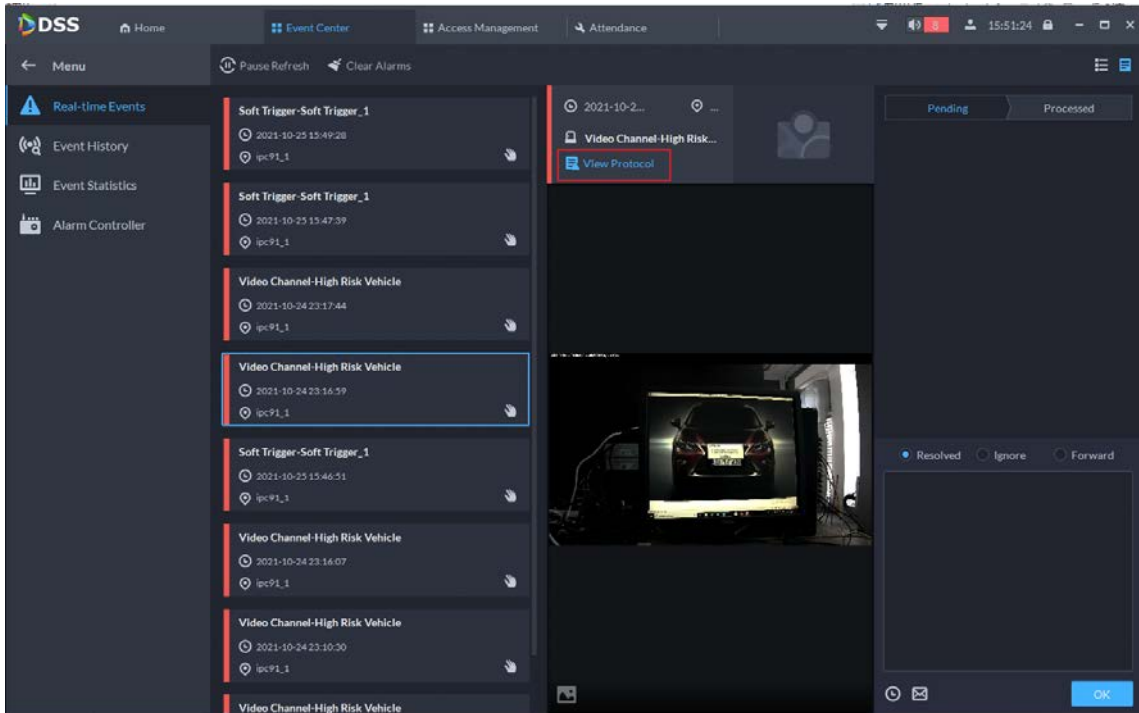
Problem:

Alarm protocol was not supported. Users could not add a protocol when an alarm occurs to show the information about handling the alarm.

Solutions:

Users can configure protocol contents in **Event** and view the contents in **Real-time Events** and **Event History** to process the alarms accordingly.





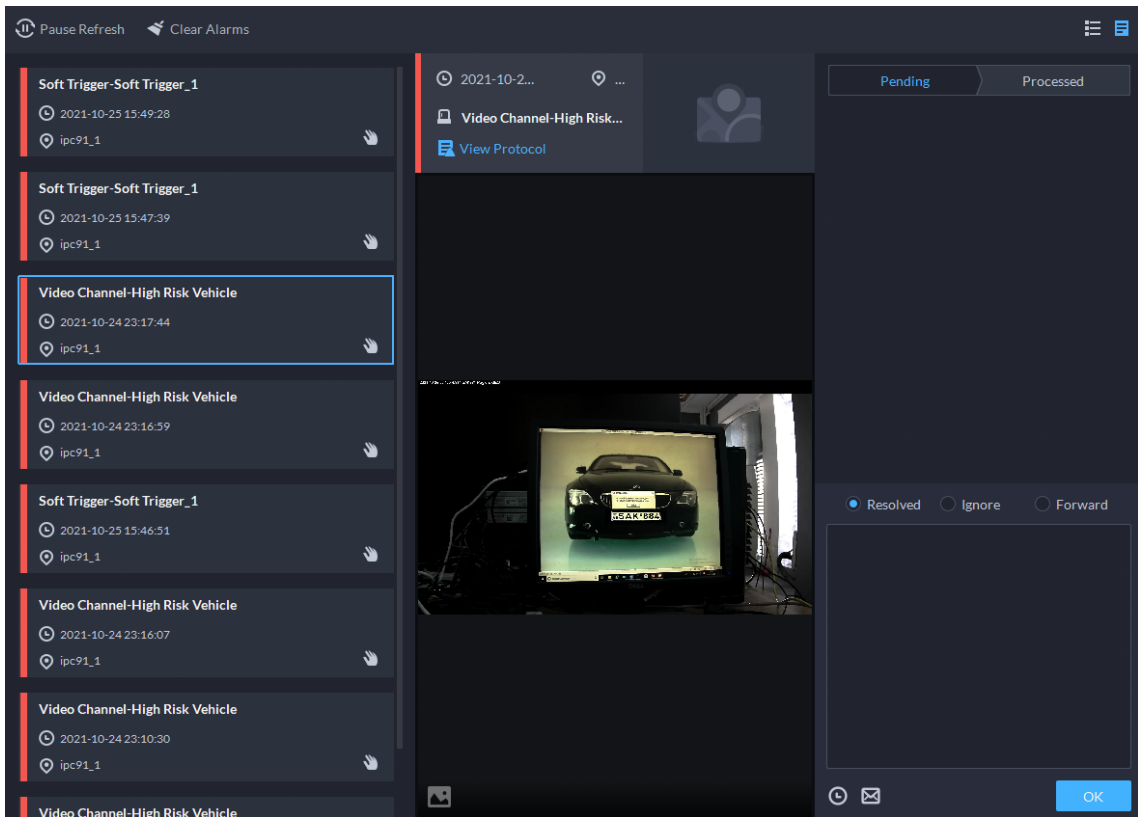
1.3.9 Real-time Alarm Events

Problem:

When viewing the real-time events, users had to switch among pages of event description and corresponding recordings, pictures and videos.

Solutions:

- Tiled display of event description, real-time recordings, videos and pictures. Users can open the files to quickly assess the event.
- Users can also download alarm event images for event assessment and sharing.



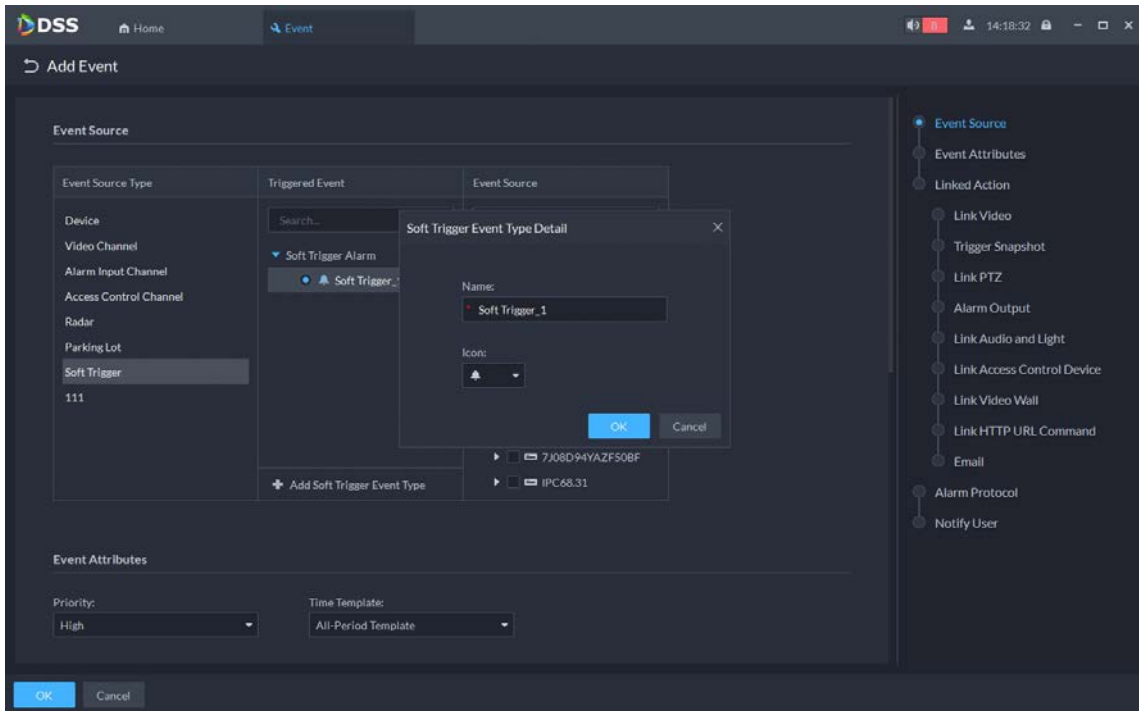
1.3.10 Soft Trigger

Solutions:

Users can customize the name of the event source type, and then select an icon for manual trigger and video channels as the event source. When viewing live videos of the selected channels in monitoring center, they will see the icon.



When emergency happens, users can click the icon to quickly trigger an alarm.



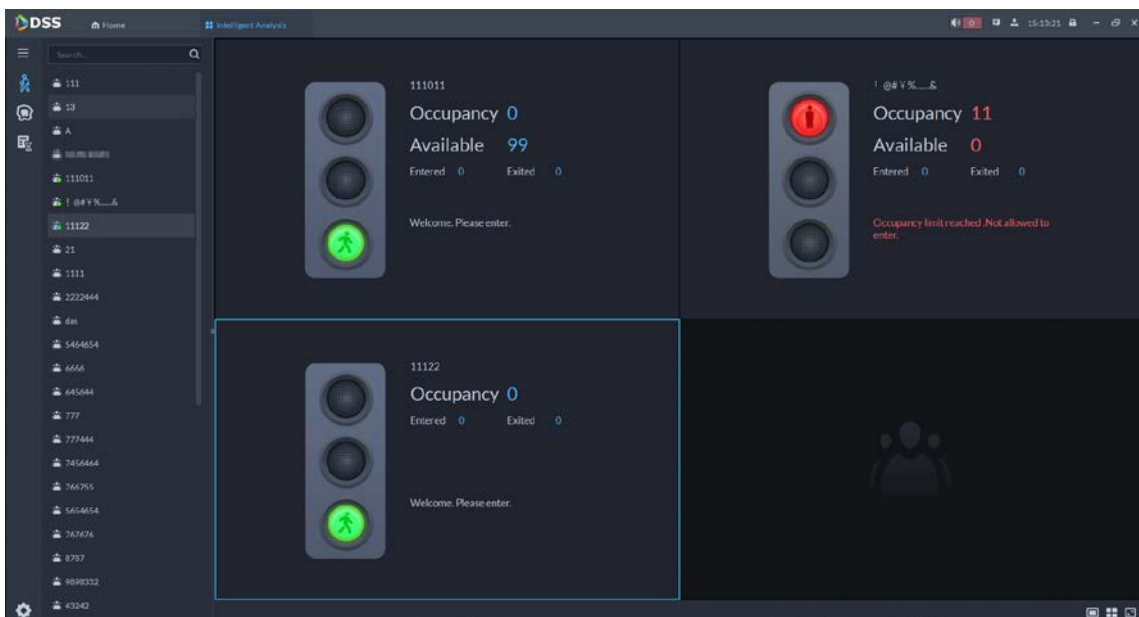
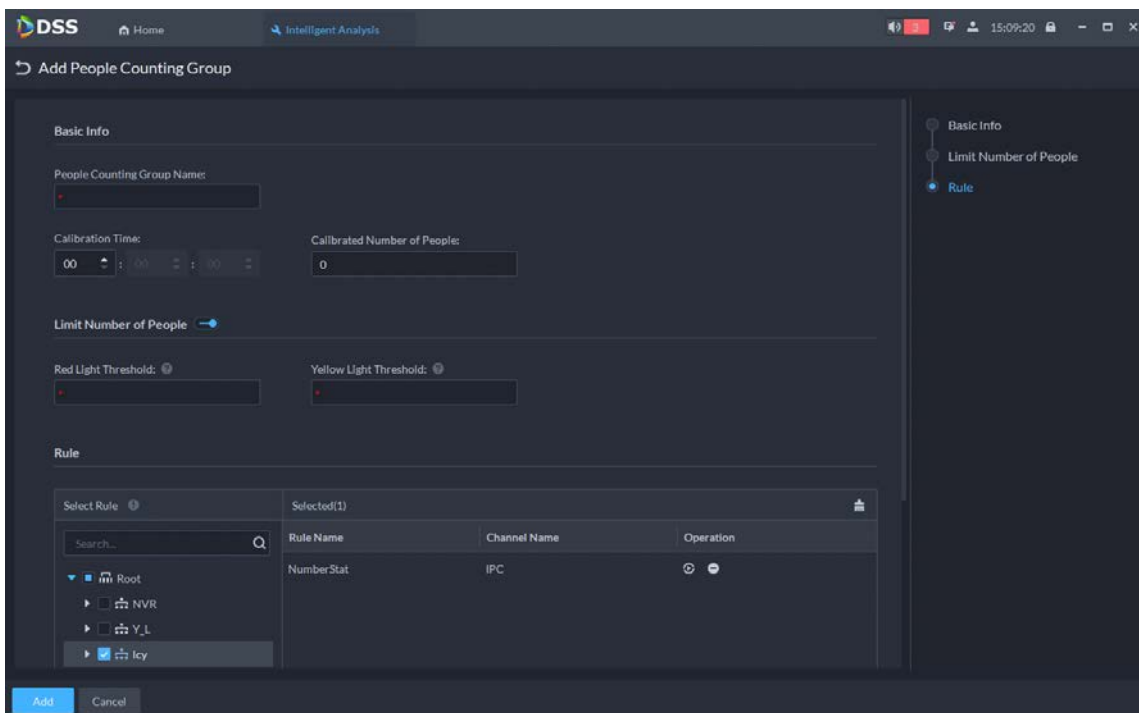
1.3.11 Intelligent Analysis

Solutions:
Real-time Count

- People counting group: Supports adding one or more people counting rules from different channels to form one people counting group, so that people from devices and channels can be counted together.
- Real-time people counting: View the number of people entering, leaving and staying in the group and the number of people allowed to enter in real time.
- Limit number of people: While adding or modifying a people counting group, users can enable Limit Number of People and set red light threshold and yellow light threshold to control the number in the group.



When the number of people staying in the group reaches the defined red light value, the light will turn red. When the number of people staying in the group reaches the defined yellow light value but is smaller than the red light value, the light will turn yellow.



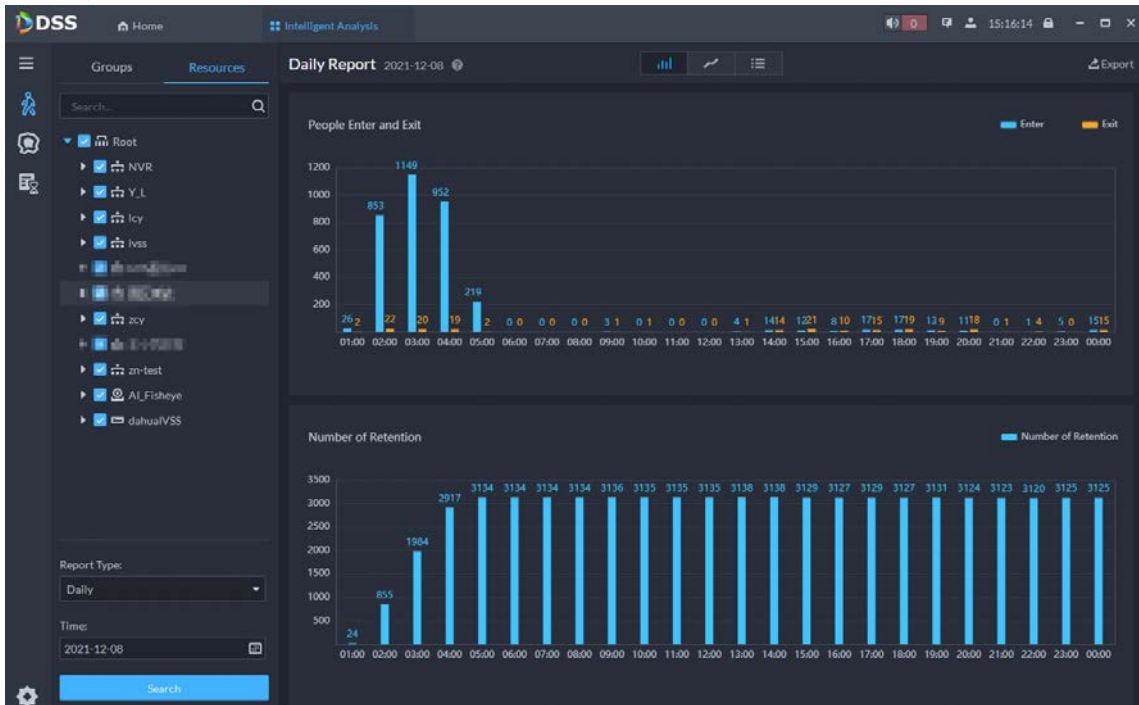
Historical Count

- Search for historical people counting reports by group or by channel.
- Displays daily, weekly, monthly and annual reports in bar chart, line chart and list.
- Export the statistics to bar chart, line chart and list.

Search by group:

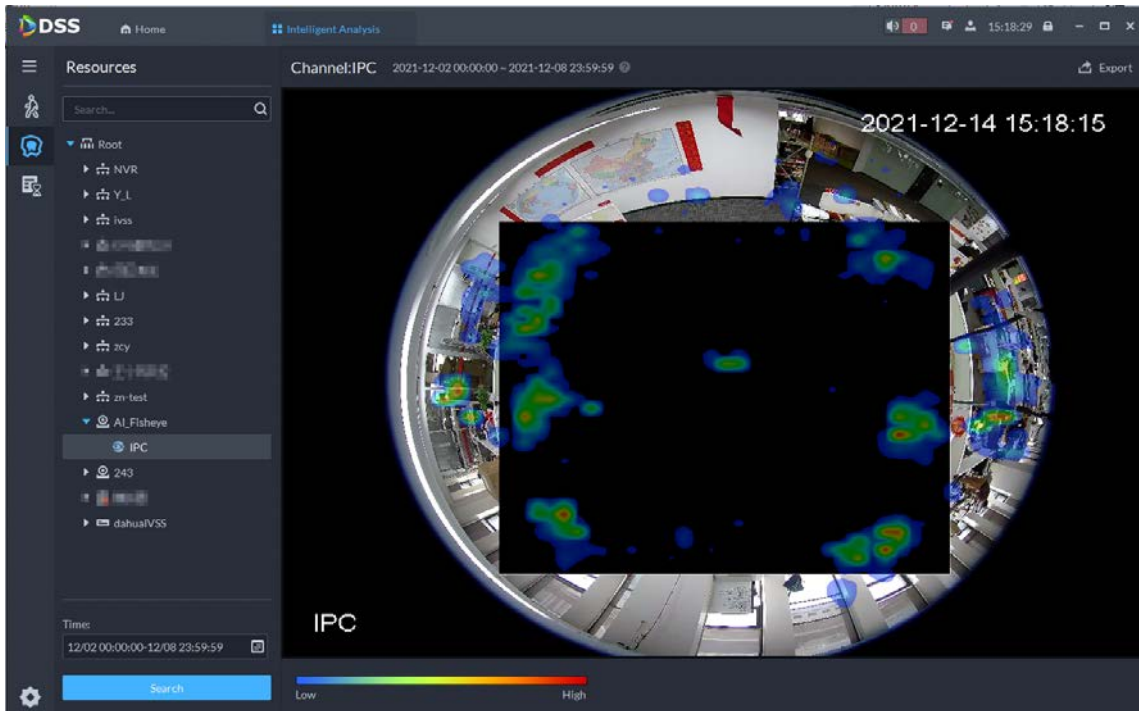


Search by channel:



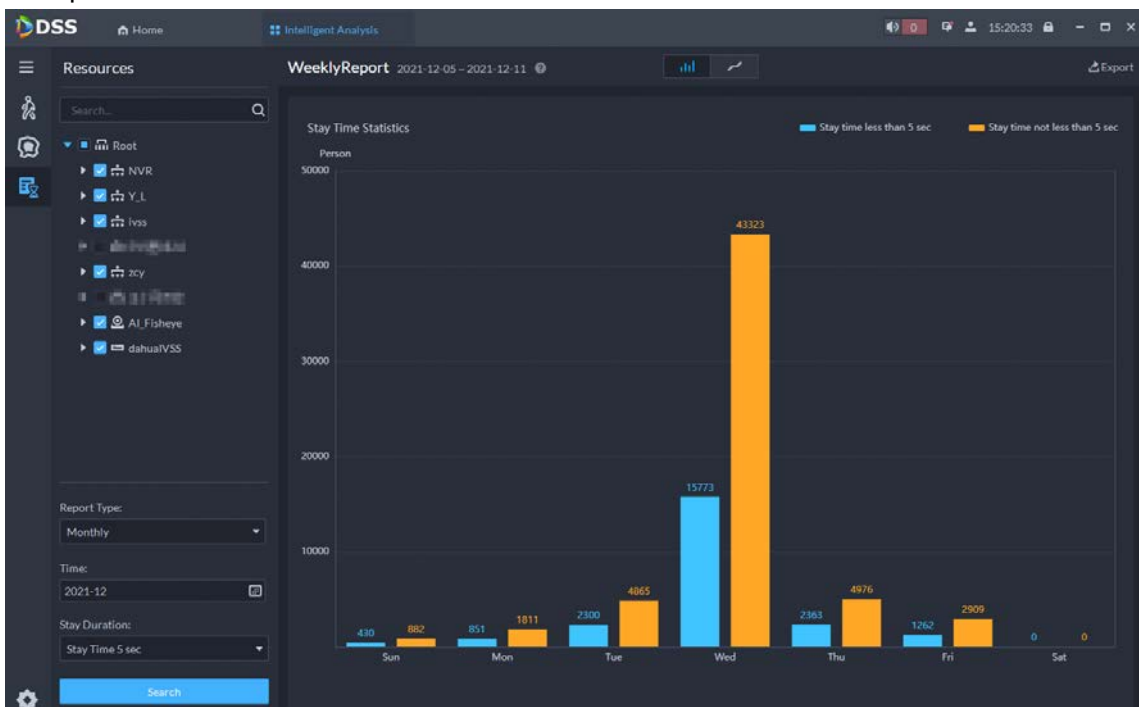
Heat Maps

- Search for the heat map from a device.
- Export heat maps to BMP.



In Area No. Analysis

- Search for the In Area Number reports by channel.
- Displays daily, weekly and monthly reports in bar chart and line chart.
- Export the statistics to bar chart and line chart.



1.3.12 Automatically Lock the Client

Problem:

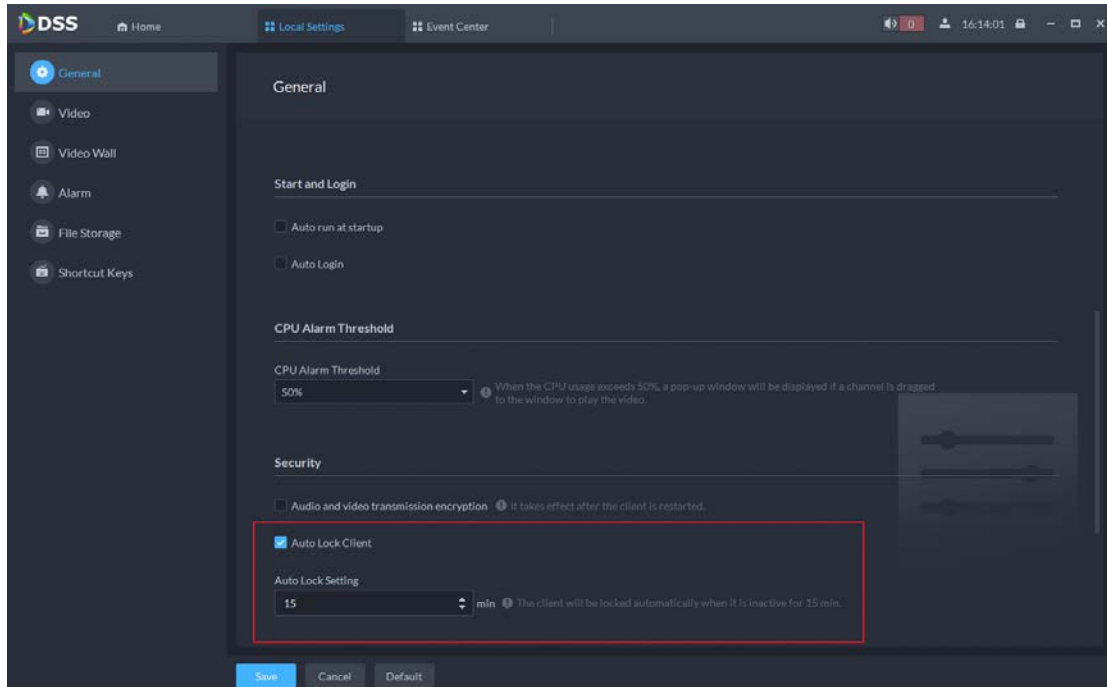
The previous versions cannot automatically lock the client if it is inactive for long, which posed a threat to system security.

Solution:

Added General in Local Settings where users can enable Auto Lock Client and set the inactive limit for auto lock.



The client will be locked automatically when it is inactive for the configured period.



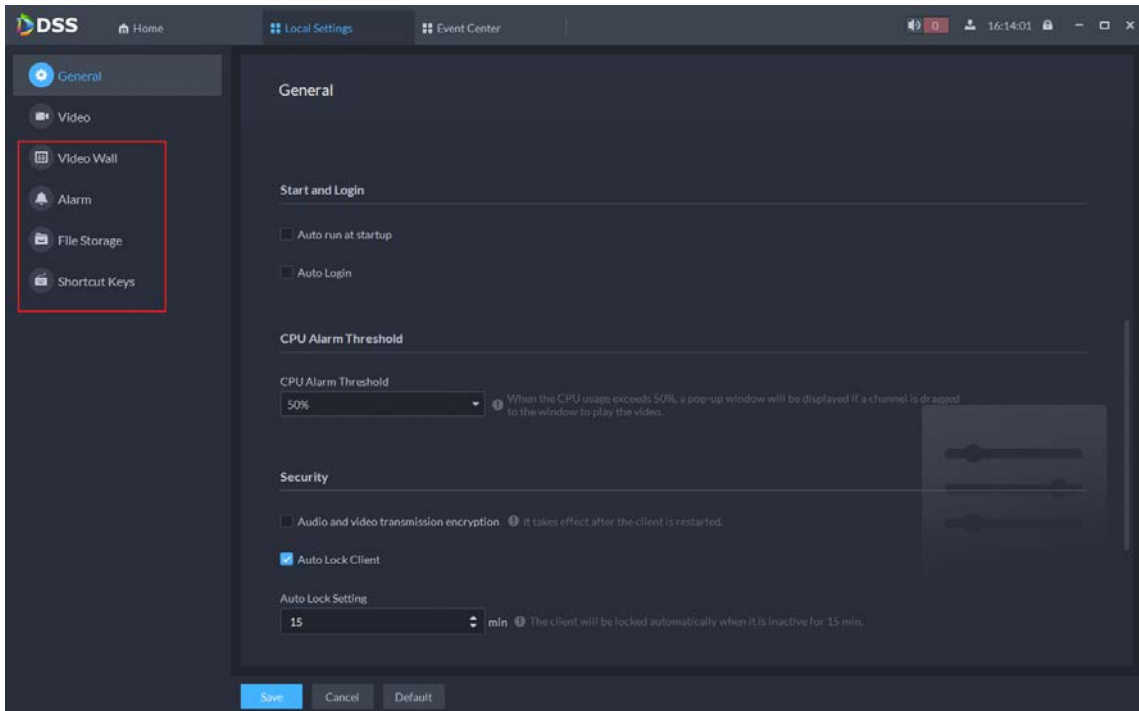
1.3.13 Local Settings

Problems:

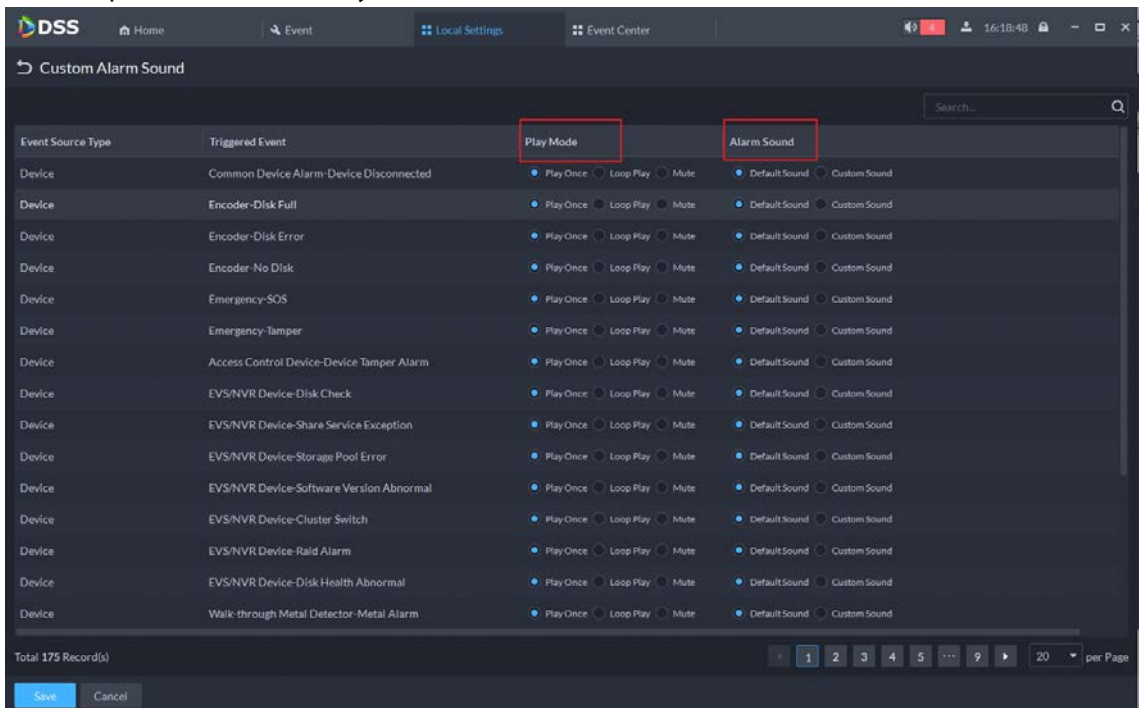
- The Local Settings layout is inappropriate.
- Configuration of alarm sound is illogical.

Solutions:

- The Local Settings menu is divided into General, Video, Video Wall, Alarm, File Storage and Shortcut Keys.



- Users can modify the play mode and alarm sound of each event type one by one or in batches and upload sounds to the system.



1.3.14 Performance Mode

Added performance mode to decoding mode Under performance mode, users can set a CPU threshold. The CPU will perform the decoding first until it reaches the defined threshold, and then the GPU will continue the decoding automatically.

1.3.15 Pulling Live Streams from Devices

The client will pull live streams directly from the device. If failed, it will forward the stream media.

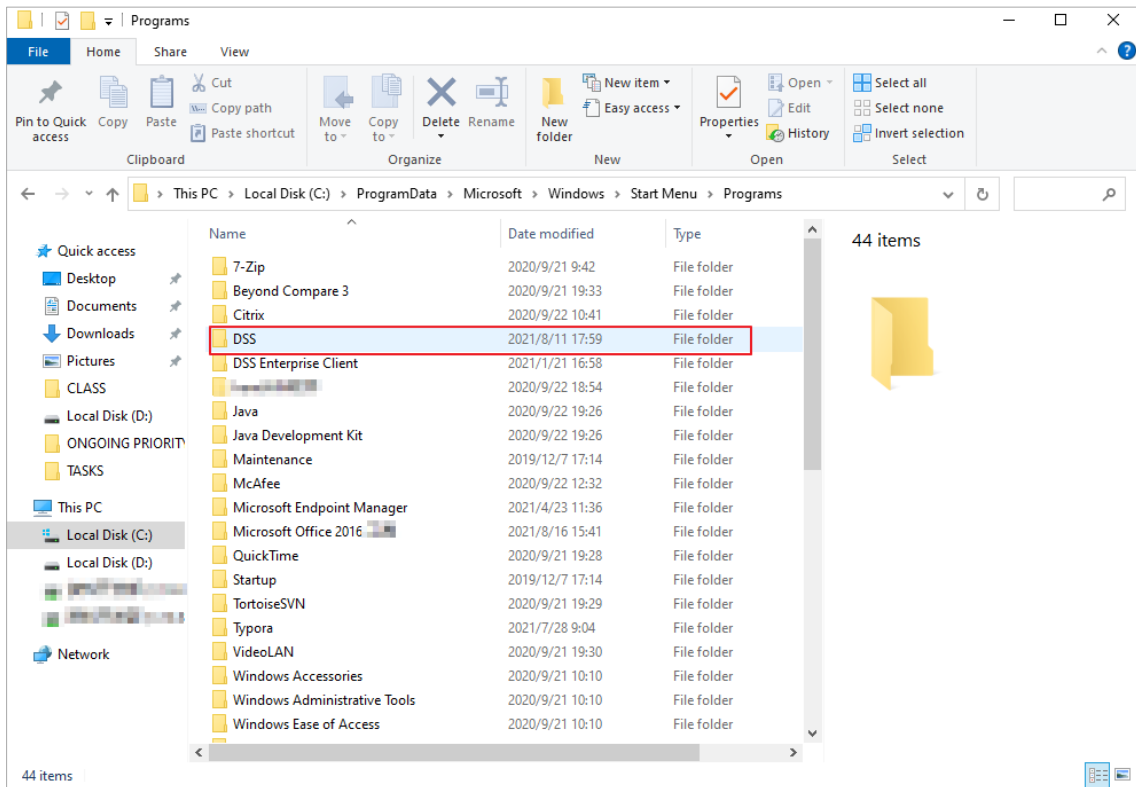
1.3.16 Storage of Local Setting Files, Logs and Cache Files

Problems:

- Configuration and cache files and logs were stored in the directory where the client is installed. But Window Guest Users don't have the permission to write the files and therefore cannot use the client.
- A mechanism is needed to clear the cache files to prevent the client from occupying too much disk capacity after long use.

Solutions:

All files generated by the client will be stored in C:/Users/Public/DSS Client. If this directory does not exist, all files will be stored where the DSS client is installed.



- Added a Cache folder in the path where the DSS client is installed to store temporary cache files, and a Picture folder to store snapshots.
- Clear cache
 - ◇ Exit to clear: When users log out of the system, all files and folders in Cache will be cleared.
 - ◇ Clear on schedule: The files are cleared every 10 minutes and each folder only reserves the latest 500 files.
 - ◇ Clear Dump files: Each process reserves the latest two Dump files and the two DSS processes reserve four Dumps altogether.

1.3.17 Service Log Debug

Problem:

Debug methods for previous versions were complicated.

Solutions:

Users can enable or disable debug for service logs in Service Log Debug in Logs.



Only super administrators have permission of the function.

After enabling debug, a large volume of logs will be displayed. Enable debug for service logs only when you are troubleshooting issues, and disable it when you are finished troubleshooting.

Service Name	Server Name	Server IP	Service Status	Enable Debug for Service Logs
SMC	10.35.93.186	10.35.93.186	Online	[Toggle]
ACDG/WPMCD	10.35.93.186	10.35.93.186	Online	[Toggle]
ADS	10.35.93.186	10.35.93.186	Online	[Toggle]
ARS	10.35.93.186	10.35.93.186	Online	[Toggle]
DMS	10.35.93.186	10.35.93.186	Online	[Toggle]
MCDALARM	10.35.93.186	10.35.93.186	Online	[Toggle]
MCDLED	10.35.93.186	10.35.93.186	Online	[Toggle]
MTS	10.35.93.186	10.35.93.186	Online	[Toggle]
PCPS	10.35.93.186	10.35.93.186	Online	[Toggle]
PES	10.35.93.186	10.35.93.186	Online	[Toggle]
PTS	10.35.93.186	10.35.93.186	Online	[Toggle]
SS	10.35.93.186	10.35.93.186	Online	[Toggle]
SWITCHCENTER	10.35.93.186	10.35.93.186	Online	[Toggle]
VMS	10.35.93.186	10.35.93.186	Online	[Toggle]
SMC	10.38.85.11	10.38.85.11	Online	[Toggle]
ACDG/WPMCD	10.38.85.11	10.38.85.11	Online	[Toggle]
ADS	10.38.85.11	10.38.85.11	Online	[Toggle]
ARS	10.38.85.11	10.38.85.11	Online	[Toggle]
DMS	10.38.85.11	10.38.85.11	Online	[Toggle]
MCDALARM	10.38.85.11	10.38.85.11	Online	[Toggle]

1.4 Compatibility

OS Name	OS Type	Platform Type	Test Strategy	Test Result
win7-32bit	Physical machine	Login Client	Auxiliary test	PASS
win7-64bit	Physical machine	Login Client	Auxiliary test	PASS
winserver2008-64bit	Physical machine	Login Client	Auxiliary test	PASS
winserver2012-64bit	Physical machine	Login Client	Auxiliary test	PASS
winserver2019-64bit	Physical machine	Login Client	Auxiliary test	PASS
winserver2016-64bit	Physical machine	Login Client	Auxiliary test	PASS

ZHEJIANG DAHUA VISION TECHNOLOGY CO., LTD.

Address: No.1199, Bin'an Road, Binjiang District, Hangzhou, P.R. China

Postcode: 310053

Tel: +86-571-87688883

Fax: +86-571-87688815

Email: overseas@dahuatech.com

Website: www.dahuasecurity.com