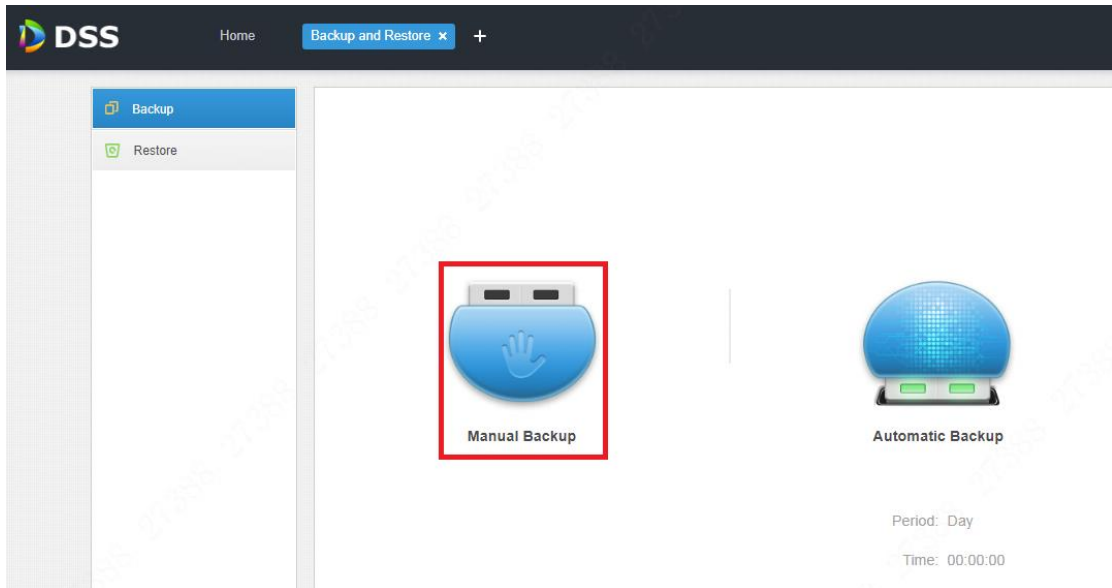


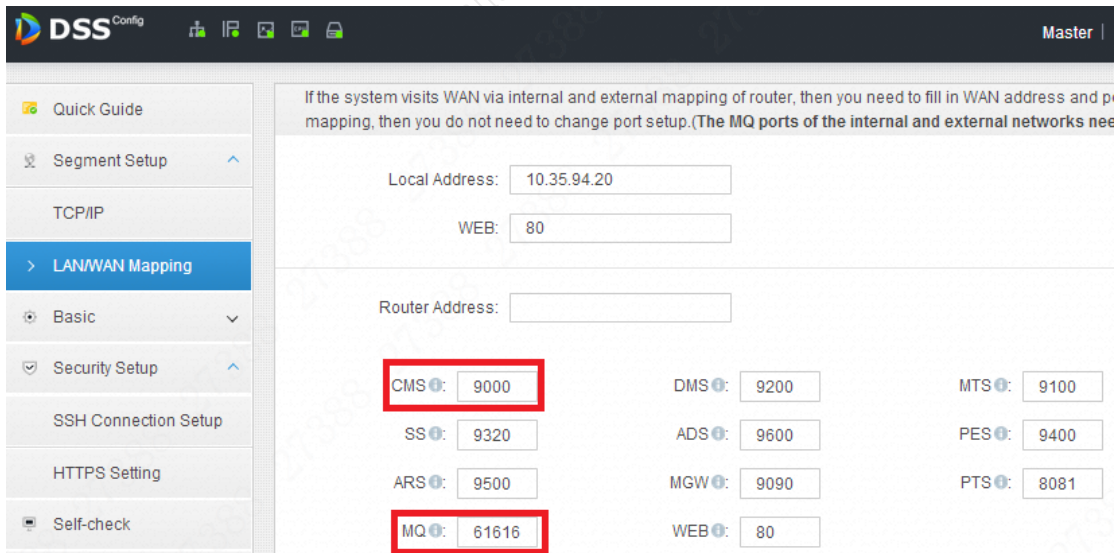
DSS4004S2 Product Update Guide

1. Preparation

Note: If on-site data backup is required, back up accordingly before update as follows:



- If DSS is updated from version 1.000.0000000 to version 1.001.0000000, make sure on site that the CMS port and the MQ port are at default settings (it is not allowed to modify these two ports for version 1.001.0000000).

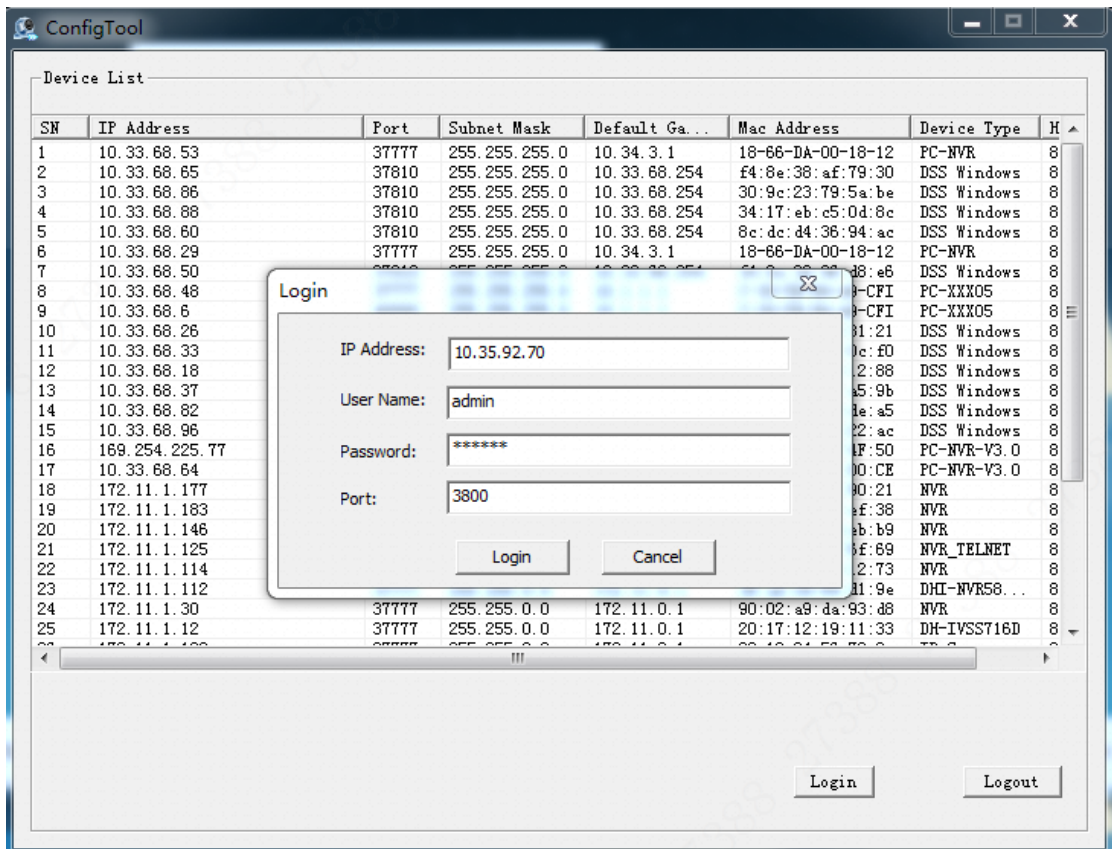


3. Download ConfigTool

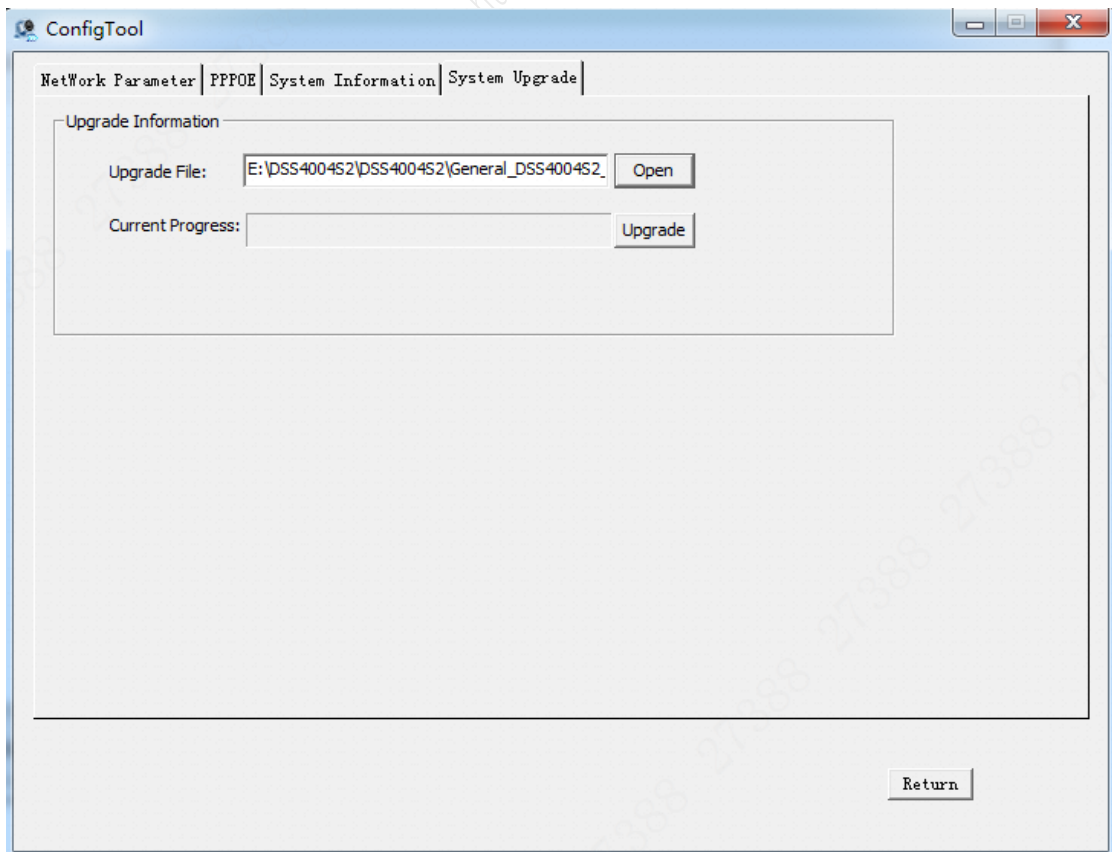
Enter IP/config in the browser to open the following screen: Click **Download Config Tool**.

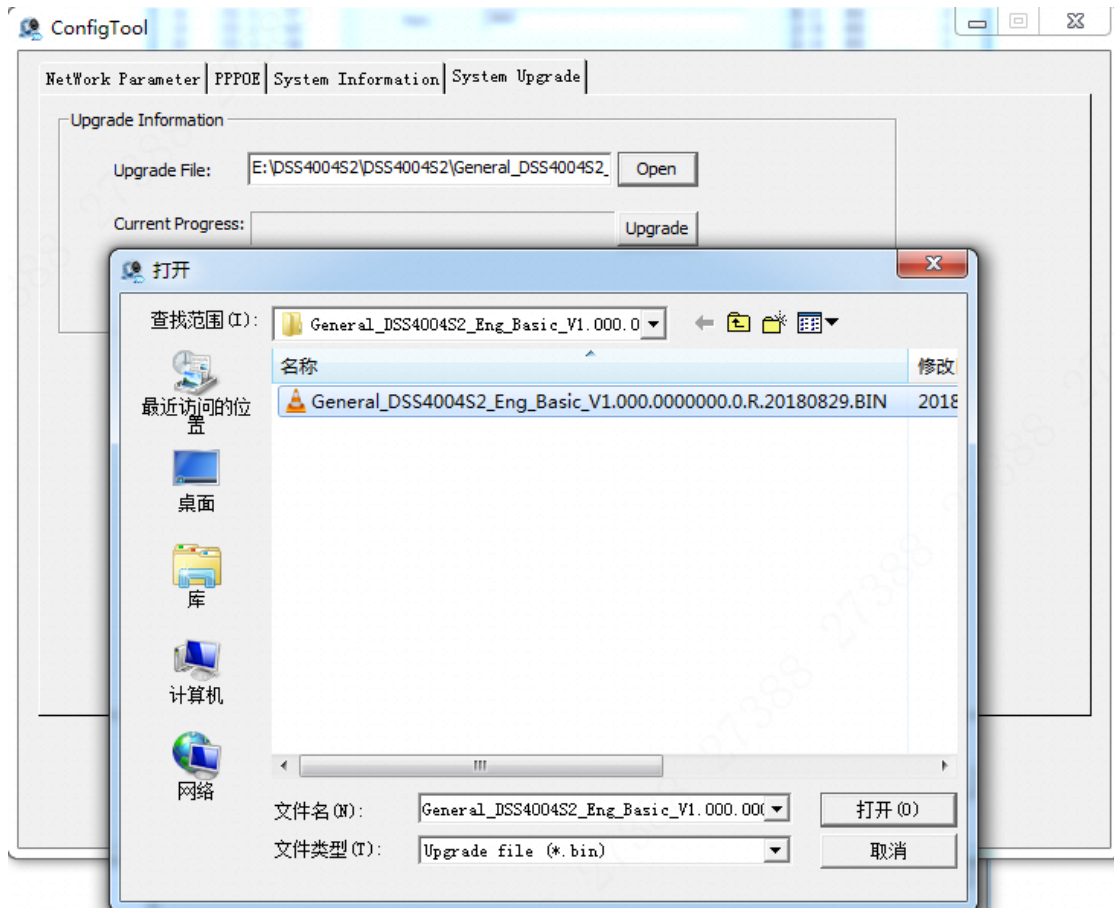


4. Open **ConfigTool** and log into the platform to be updated.
Default Port: 3800
Default User Name: admin
Default Password: The login password for the config screen.

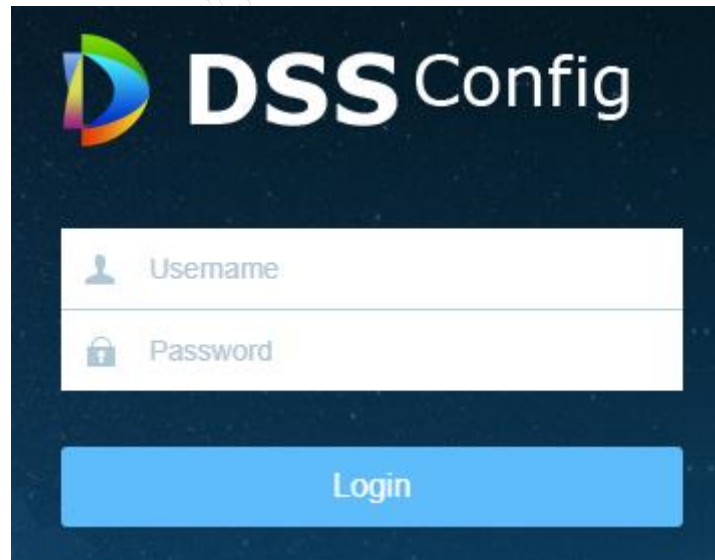


- Log into the platform, click **Open** to select the corresponding update package (.BIN file), and then click **Upgrade**.





6. After update, the system will reboot automatically.
7. After system reboot, visit the IP/config screen in the browser and log in (the default User Name: admin).



8. **Basic -> Maintenance -> Restore Default**

Note: This will restore the device to the factory defaults and clean up the files of the previous version. Cleanup is allowed in case of any abnormality after update and no need to archive any old data on site.

- Quick Guide
- Segment Setup
- Basic
- Manage Account
- Maintenance**
- Time Setup
- Route Setup
- PING Check
- URL Detect
- Log
- Security Setup



Reboot



Shutdown



Restore Default



Reset Password

27388 Dahua 2018-12-18